

escea.

OUTDOOR GAS FIREPLACE USER GUIDE North America

630165_2



EF5000

www.escea.net

Any service work carried out on this appliance must only be done by a recognised escea technician or authorized personnel.

The data plate for this appliance, containing technical information and specifications, can be found to the right of the control tray, near the base of the fire. To access this, the fascia must be removed.

The area surrounding the appliance must be clear and free from combustible materials, gasoline and other flammable vapors and liquids.

This appliance must not be installed or used indoors.

Children and adults should be alerted to the hazards of high surface temperatures and should stay away to avoid burns or clothing ignition.

Young children should be carefully supervised when they are in the area of the appliance.

Clothing or other flammable materials should not be hung from the appliance, or placed on or near the appliance.

Any guard or other protective device removed for servicing the appliance must be replaced prior to operating the appliance.

Installation and repair should be done by a qualified service person. The appliance should be inspected before use and at least annually by a qualified service person. More frequent cleaning may be required as necessary. It is imperative that control compartment, burners and circulating air passageways of the appliance be kept clean.

Do not use this appliance if any part has been under water. immediately call a qualified service technician to inspect the appliance and to replace any part of the control system and any gas control which has been under water.

Under no circumstances should you touch the coals or metalwork during operation.

escea.

17 Carnforth st, Green Island
Dunedin, New Zealand
E-mail: info@escea.com
Web: www.escea.com
Phone: 1 866 615 3096

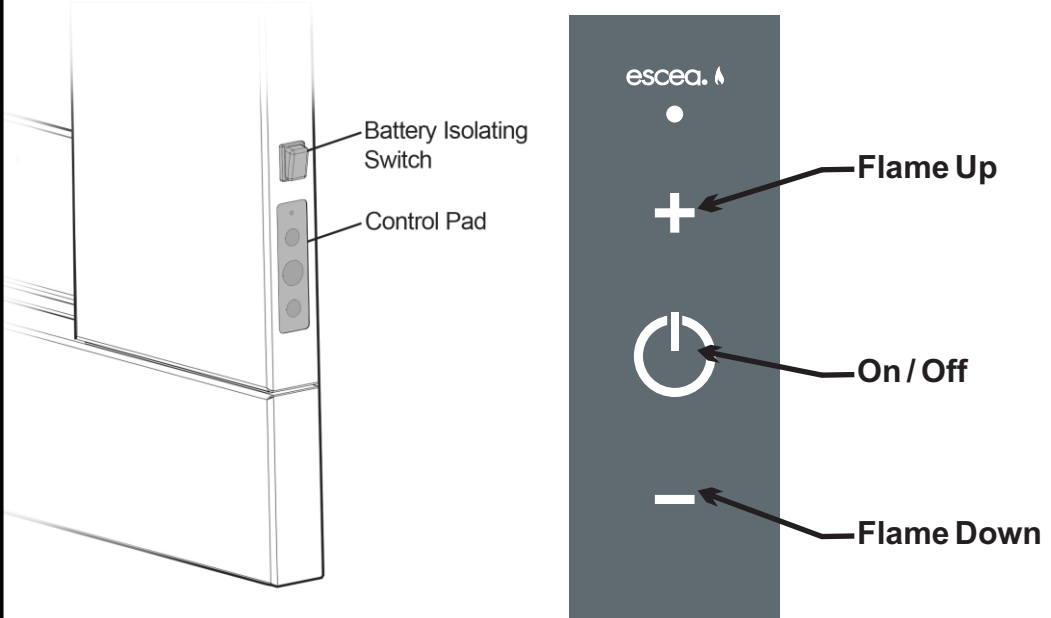
escea.

Contents

Basic Operation	1
Removing the Fascia	4
Replacing Batteries	5
Cleaning and Maintenance	6
Warranty Information	7

Basic Operation

The EF5000 is operated by the touch control located on the Right hand side outer edge of the fascia. The basic operations possible from the touch control are ON/OFF and manual adjustment of the flame height. **Before operating the fire, switch the Battery Isolating Switch on.**



Ignition:

To turn on the fire push the ON/OFF button on the touch control. The pilot will start sparking and gas will start flowing to the pilot which should light and be visible in a few seconds.

The ignition process takes a duration of 12 seconds. No other button should be pressed during those 12 seconds.

In the event of the pilot not igniting after 12 seconds press the ON/OFF button. This will turn the valve off completely, then restart the ignition process.

Basic Operation

Turning on the main burners:

Once the pilot flame has been running for 6 seconds press the FLAME UP button to release gas to the two main burners

The EF5000 has 4 flame positions: PILOT flame only, LOW burner flame, MEDIUM burner flame and HIGH burner flame.

Adjusting the flame height:

While the fire is on, push the FLAME UP button or the FLAME DOWN button to increase or decrease the flame height.

If the FLAME UP button is pushed while the fire is on HIGH burner flame position, nothing will happen. Similarly if the FLAME DOWN button is pushed while fire is in the PILOT flame position, nothing will happen.

Turning off the fire:

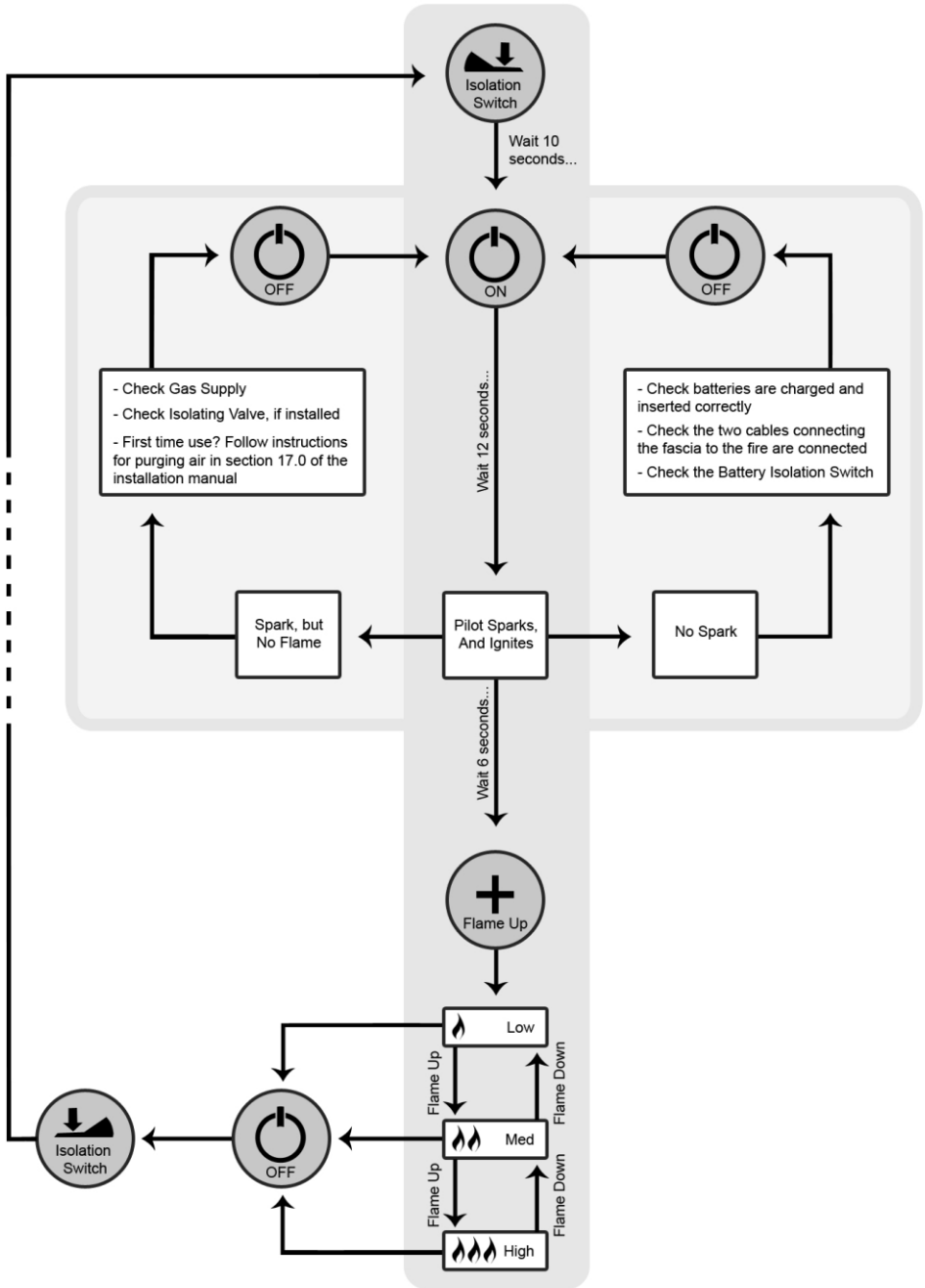
To turn the fire off, you must push the ON/OFF button. This will shut down the gas flow to the pilot flame and both burners.

It is recommended that if you will not be using your fire for long periods of time to switch it off at the isolation switch. This will also extend the battery life.

Gas supply interruption:

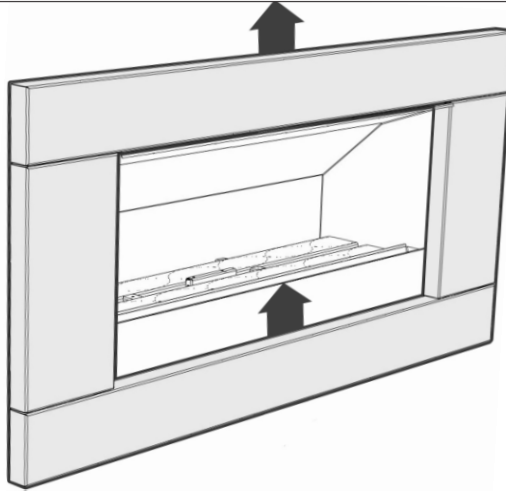
In the event that the gas supply is interrupted during the operation of this appliance, and then is re-established immediately, you must turn off the battery isolating switch and not attempt to relight the appliance for at least 5 minutes.

Basic Operation



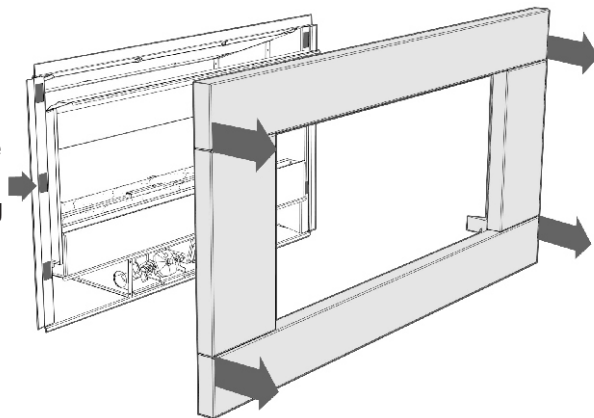
Removing the Fascia

The EF5000 Stainless Steel fascia is attached to the fire by four 'hooks' on the corners of the fascia. If you need to remove the fascia, first give the fascia a brief lift upwards as shown.



Now pull the fascia towards you, and rest the Fascia on the brackets half way down the firebox, or on the ground while you unplug the two cords connecting the fascia to the fire.

Brackets to rest the top fascia hooks on while disconnecting the control cords.

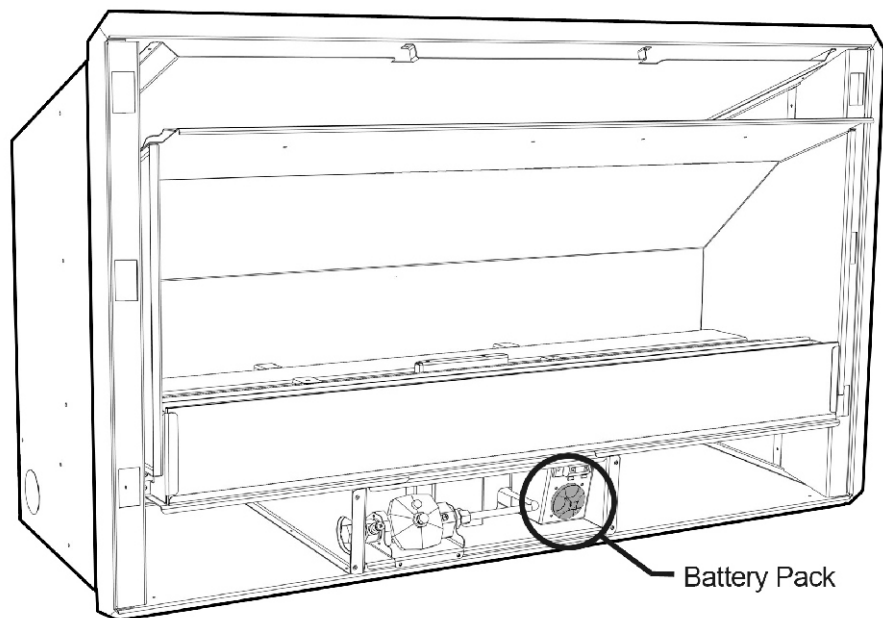


Reverse these steps to re-fit the Fascia, ensuring the two connections are correctly plugged in by testing the fire.

Replacing Batteries

The EF5000 uses 3x D sized batteries, To access the battery pack you will need to remove the fascia (as described on previous page).

When the fascia has been removed, you will find the battery pack located in the lower middle of the fire, situated inside the control box.



Remove the cap of the battery pack, turn it anti-clockwise until it stops, then pull. The batteries inside should slide out.

Once the new batteries have been placed inside, (with the dimple facing outwards) replace the cap and turn it clockwise until it stops to seal it.

Cleaning your EF5000

Note: Always ensure the fireplace is cold before starting any cleaning or maintenance.

To clean the glass and stones in the front stone tray, first remove the stones from inside the tray and the glass will then be free to slide upwards.

The glass can be cleaned using standard window cleaner. The quartz stones can be washed using soapy water

To clean the weather cover warm soapy water should be used.

Cleaning of the ceramic stones and burners can be carried out using a brush and a dry cloth

Fascia:

The Fascia is the visible surround of your Escea Gas Fireplace and must be treated carefully to prevent unsightly marks from tarnishing the visual quality of the product. Some marking over time is inevitable however, so the following directions will assist you in getting the maximum enjoyment from your Escea Gas Fireplace.

Never ever rub the fascia.

The outside of an Escea Fascia must only be cleaned with a soft microfibre cloth. If heavier cleaning is required for the likes of grease or stubborn fingerprint removal we recommend the use of Steel Kleen brand Ezi Wipes. These wipes have been tested by Escea technicians and produce very satisfying results, when used correctly. Instructions

Cleaning your EF5000

For Stainless Steel Fascias:

1. Ensure that the Gas Fireplace is off, and that the fascia is cold.
2. Using the gloves provided with your fascia, remove the towelette from the sachet and wipe the fascia with even, straight strokes.
3. Make sure your strokes follow the direction of the grain or brush finish. Wiping across the grain can leave small scratches.
4. The wipe will leave a very fine film over the fascia, ensure this film is distributed evenly.
5. If the film is applied too heavily and is quite visible, you can remove the excess by gently wiping dry with a microfibre cloth. Ensure your strokes still follow the direction of the grain or brush finish.
6. Ensure that no film is applied to the glass of your Escea Gas Fireplace. If applied accidentally, wipe off with an absorbent microfibre cloth.

For Powder Coated Fascias:

1. Ensure that the Gas Fireplace is off, and that the fascia is cold to the touch.
2. Using the gloves provided with your fascia, remove the towelette from the sachet and wipe the fascia with even, straight strokes.
3. Because the wipe leaves a protective film over the fascia, the entire fascia will need to be wiped to avoid seeing a difference in surface texture. Ensure this film is distributed evenly.
4. If the film is applied too heavily and is quite visible, you can remove the excess by gently wiping dry with a microfibre cloth
5. Ensure that no film is applied to the glass of your Escea Gas Fireplace. If applied accidentally, wipe off with an absorbent microfibre cloth.

LIMITED WARRANTY:

Provided that the Product is installed as per ESCEA's Installation Manual and the step by step warranty procedure has been followed as per instructions issued by ESCEA, (documented in the Dealer Manual), and the product is operated and maintained in accordance with ESCEA operating and maintenance instructions, then for the first period of twelve (12) months from the date of purchase ESCEA will pay to the dealer who sold the appliance, a pre-determined sum to repair or replace any part of the Product that is deemed by ESCEA to be faulty.

For the second period of twelve (12) months from the date of purchase ESCEA will supply replacement parts only, without charge.

Parts and Labor for the first twelve (12) months:

- a) ESCEA, at its sole discretion and through its dealer, may modify, adjust, repair, or replace the faulty products. The warranty period on parts and labor shall be for twelve (12) months from the date of purchase.
- b) Pre-determined labor costs will only be reimbursed when ESCEA specified procedure has been followed, and ESCEA has authorized service work before it was carried out.

Parts Only for the second twelve (12) months:

- a) ESCEA, at its sole discretion, will provide replacement parts to its dealer for the benefit of an end user. Faulty parts **MUST** be returned to ESCEA. The parts only warranty period shall be for twelve (12) months and will commence twelve (12) months after the acceptance date of the Products by the ESCEA retailer.

General Terms and Exclusions:

1. All repairs made within the Limited Warranty period shall be covered by this Limited Warranty for a period of three (3) months from the date of completion of the repair, or for the remainder of the overall Limited Warranty period, whichever is the longer.
2. If the buyer or any other party modifies any part of the product within the Limited Warranty period without the prior written consent of ESCEA then the Limited Warranty shall be void. ESCEA may, at its sole discretion, decide that the Limited Warranty is void in relation to any part of the product, which has been modified.
3. ESCEA must be notified of all claims under this Limited Warranty as soon as possible, but in any event not later than two (2) weeks of the claimant becoming aware of the circumstance giving rise to the claims.
4. No ESCEA Distributor, retailer, employee or other third party is authorized to make any modification, extension, or addition to this Limited Warranty, whether verbal or written.
5. ESCEA reserves the right to discontinue products or make substitutions, in such event, the buyer may receive a substitute product or a cash refund at ESCEA'S sole discretion, if a replacement for the product covered by this Limited Warranty is no longer available.
6. ESCEA is not responsible for damage arising from failure to follow instructions for the product's installation, maintenance and permitted and proper use. The Limited Warranty does not cover damage caused by use with non-ESCEA products or damage caused by accident, abuse, misuse, weather, fire, flood, earthquake or other external causes. Products where an ESCEA serial number has been removed or defaced or damage caused by incorrect fuel type or flueing are also not covered. Cosmetic damage, including but not limited to paint blemishes, scratches, non structural surface rust, water damage and normal fair wear and tear are not covered as well. Gas Fireplaces require annual service, problems caused by not having this service done such as (but not limited to) dust and debris build up, flat batteries, insects present in burners, incorrect gas pressure and worn thermocouples are also not covered under this warrantee.

LIMITATION OF REMEDIES:

TO THE EXTENT PERMITTED BY LAW:

This limited warranty, and the remedies set forth above, are exclusive and in lieu of all other warranties, remedies and conditions, whether verbal or written, statutory, express or implied.

Escea specifically disclaims any and all statutory or implied warranties and conditions, including, without limitation, warranties of merchantability, fitness for a particular purpose and warranties against latent defects.

Except as provided herein, Escea is not responsible for direct, special, incidental or consequential loss or damages resulting from any breach of warranty or condition, or under any other legal theory, including but not limited to the loss of any of the following: use; revenue; actual or anticipated profits (including loss of profits on contracts); use of money; anticipated savings; business; opportunity; goodwill; reputation; any or indirect or consequential loss or damage howsoever caused including the replacement or equipment and property.

Some states in Canada and in some States in the United States do not allow the exclusion of incidental or consequential damages, so the above limitation may not apply to buyer.