

# Fuel Bed Media Installation Instructions

Splitwood Elm Logs

FIRE BY **escea.**

*Applies to: DF Models*

## FUEL BED INSTALLATION

**NOTE:** Please refer to 630381 DF Series Installation Manual for full details regarding primary and secondary glass removal and re-assembly.

### Log Identification and Packaging - Splitwood Elm Logs

The images below display all elm log types provided by Escea, labeled with their correct orientation letters and X/Y positions for the ends of each log. The logs used will depend on which fireplace model is being installed. To help identify which logs have been provided, the following images will show the layout of the traditional logs inside the box packaging.

#### Packaging - DF700 Splitwood Elm Logs:

**NOTE:** Ember bed rocks are contained in a separate bag inside the box



#### Packaging - DF960 Splitwood Elm Logs:

**NOTE:** Ember bed rocks are contained in a separate bag inside the box



## FUEL BED INSTALLATION

### Log Retainer Folding Orientation

The log retainers for the Splitwood elm fuel bed media will be supplied to the installer as a flat part. These log retainers will be hand-folded during the installation of the fuel bed media.

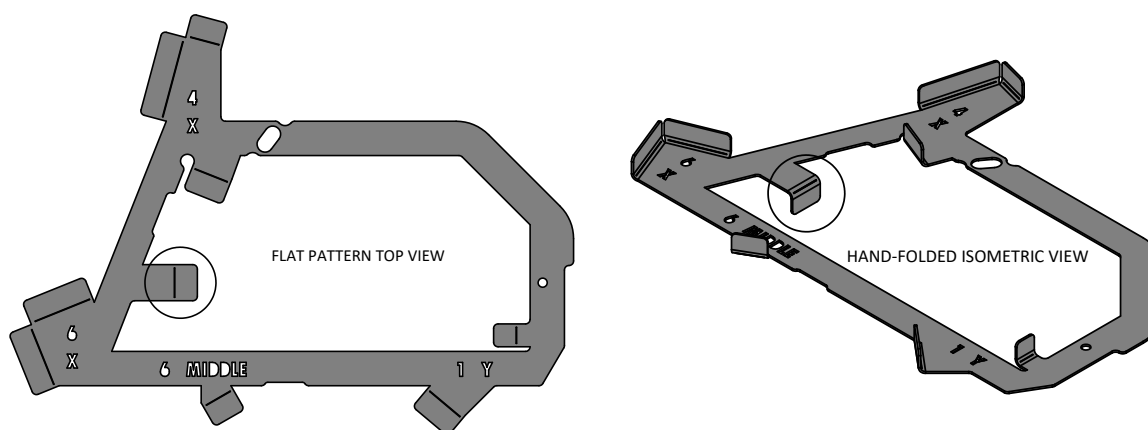
The following images displays the correct folding orientation for the fuel bed log retainers. All pins are to be folded **UP** at a 90° angle unless stated otherwise in this instruction manual.

**NOTE:** Be aware of the correct orientation of the log retainers when folding. You must be able to read lettering on log retainer to know that the log retainer is the correct way UP. Hand-fold pins that have been circled in the images below are to be folded **DOWN** 90°.

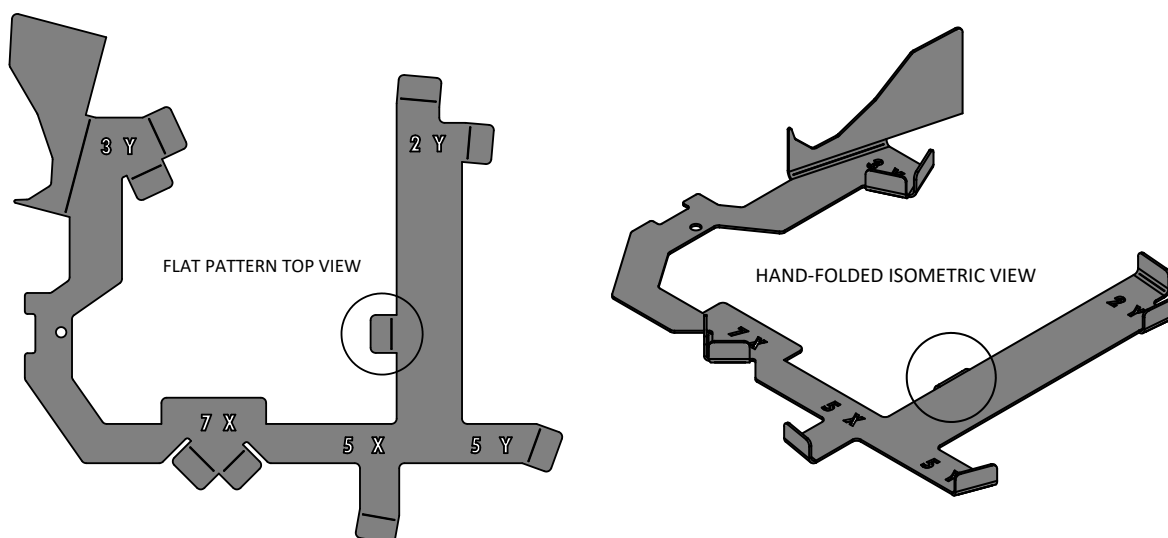
**BEWARE OF METAL FATIGUE - DO NOT REPEATEDLY FOLD AND UNFOLD THE HANFOLD PINS.**

### DF700 Log Retainers:

- 104167 DF700 MkII Splitwood Elm LHS Log Retainer



- 104168 DF700 MkII Splitwood Elm RHS Log Retainer

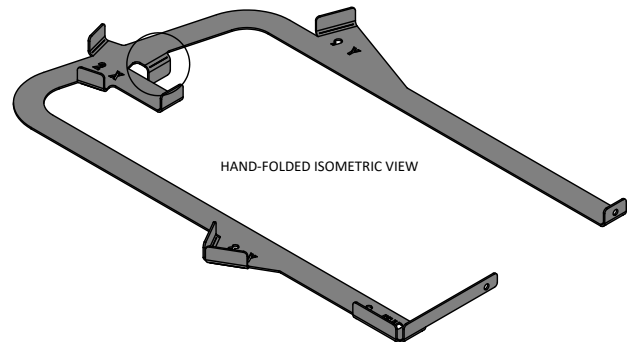
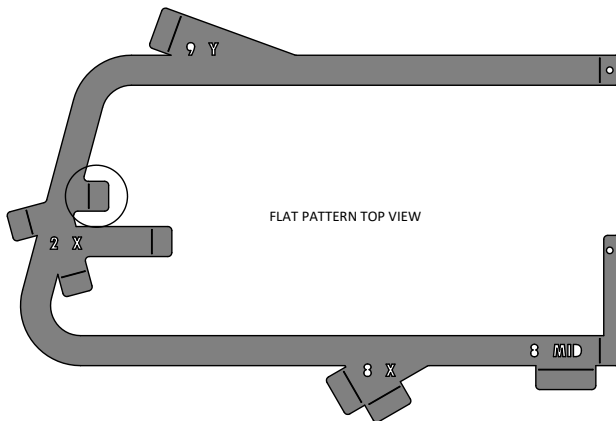


## FUEL BED INSTALLATION

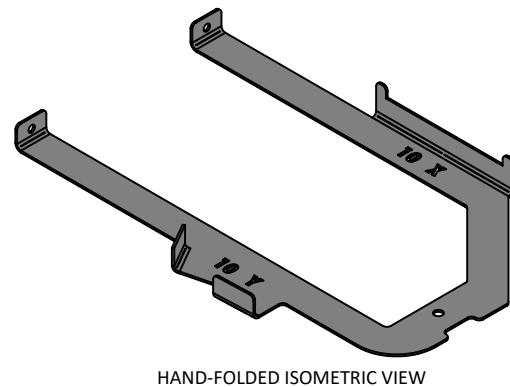
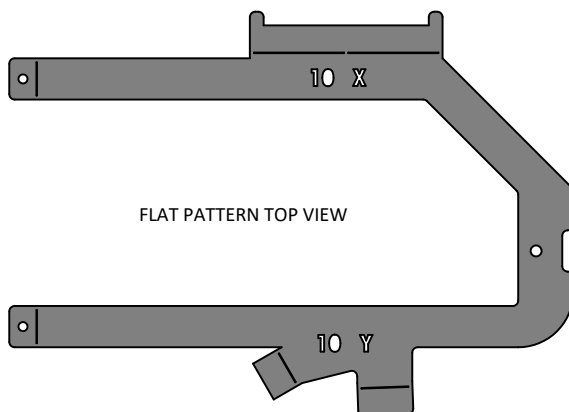
### Log Retainer Folding Orientation - Continued

#### DF960 Log Retainers:

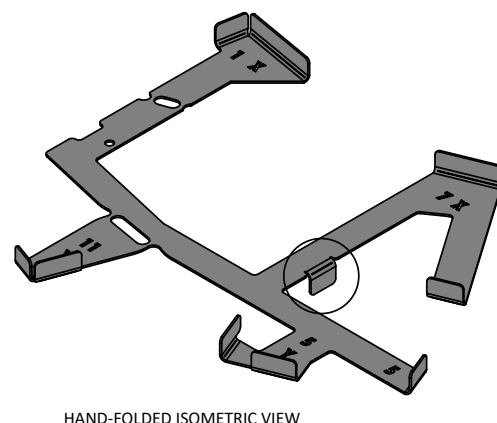
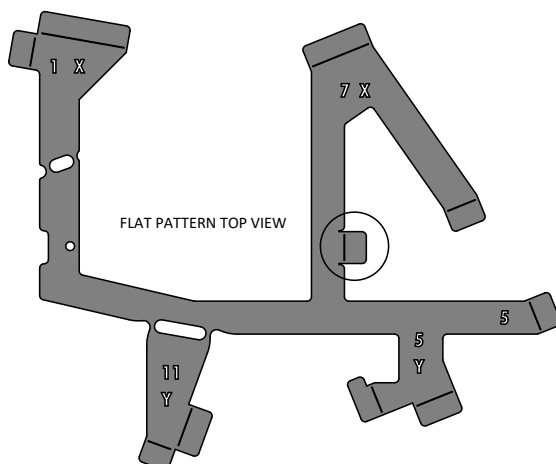
- 104228 DF960 MkII Splitwood Elm LHS Extension Log Retainer



- 104229 DF960 MkII Splitwood Elm LHS Log Retainer



- 104230 DF960 MkII Splitwood Elm RHS Log Retainer



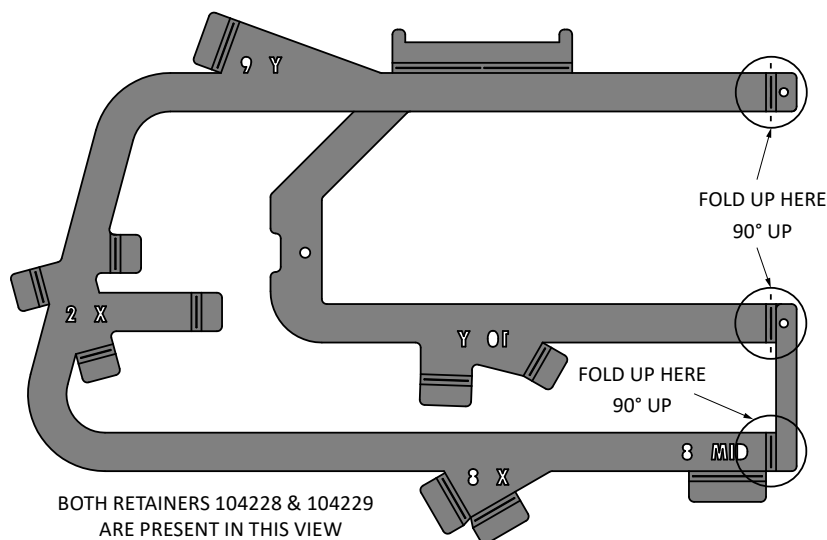
## FUEL BED INSTALLATION

### Log Retainer Folding Orientation - Continued

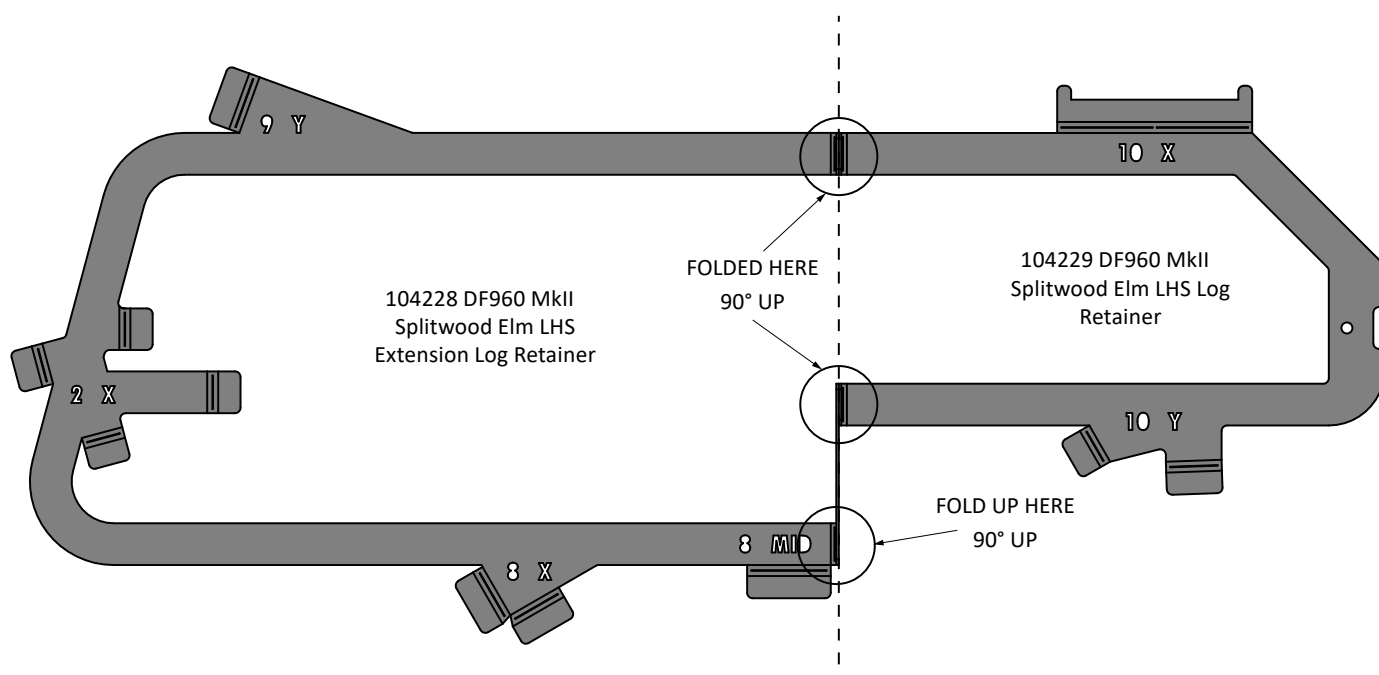
**NOTE:** The completed LH retainer for the DF960 is composed of retainers 104228 and 104229; these retainers will come riveted together along with the retainer kit. Please unfold the retainers according to the steps highlighted below before installation.

**BEWARE OF METAL FATIGUE - DO NOT REPEATEDLY FOLD AND UNFOLD THE HANFOLD PINS.**

TOP VIEW - RETAINERS BEFORE FOLDING



TOP VIEW - RETAINERS AFTER FOLDING





## FUEL BED INSTALLATION

### DF700 Log Placement

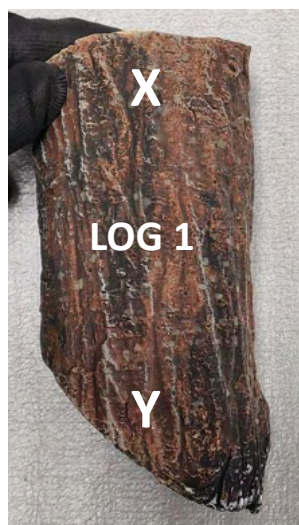
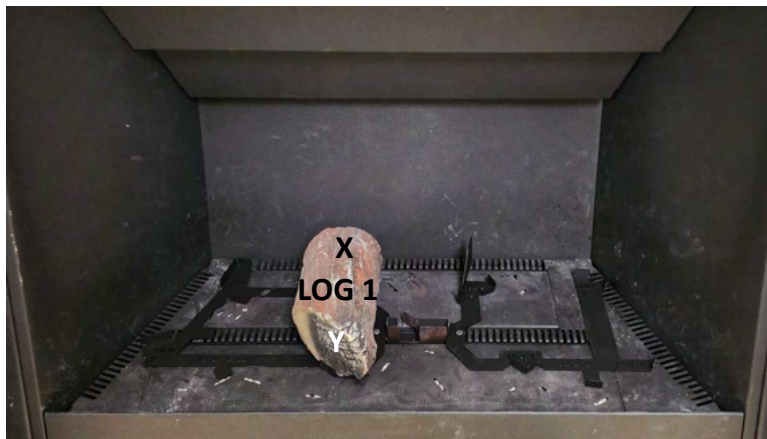
The following images displays a step-by-step process for correct log placement of the Splitwood elm fuel bed for a DF700 model. The log retainers will display the orientation letter of the log used, alongside its X/Y position, to impart which log and which end should be placed in the retainer feature.

**Logs Needed: 1x Log 1, 1x Log 2, 1x Log 3, 1x Log 4, 1x Log 5, 1x Log 6, 1x Log 7**

**NOTE: EVENLY PLACE A SINGLE LAYER OF EMBERS OR FLAKES AFTER THE LOGS HAVE BEEN LOCATED. EXCESS EMBERS OR FLAKES SHOULD NOT BE ADDED IF ONE EVEN LAYER HAS BEEN ACHIEVED.**

**NOTE: The embers must not cover the pilot or pilot guard. Logs must be located correctly as illustrated in this section or the warranty may void.**

1. Place 1x Log 1 on the log retainers



## FUEL BED INSTALLATION

### DF700 Log Placement - Continued

2. Place 1x Log 3 on the log retainers

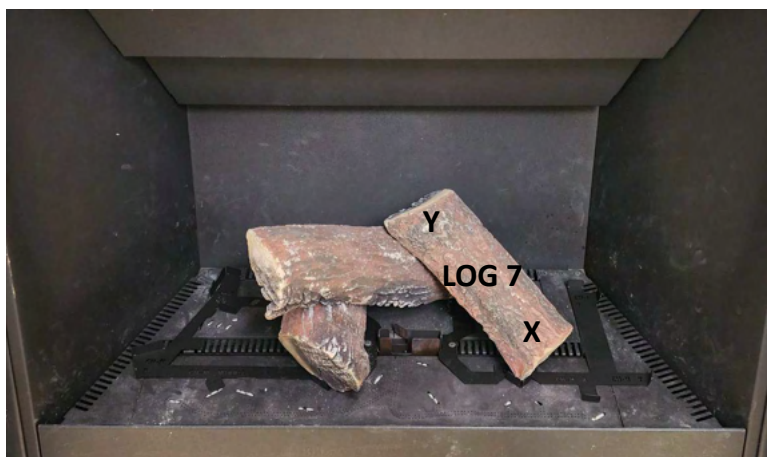


## FUEL BED INSTALLATION

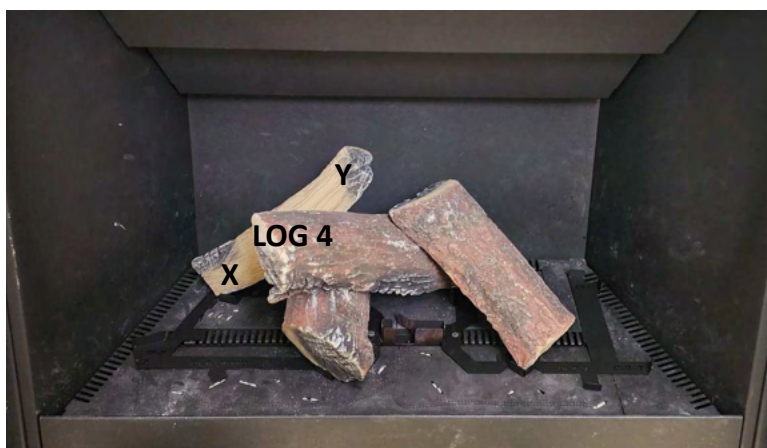
---

### DF700 Log Placement - Continued

3. Place 1x Log 7 on the log retainers



4. Place 1x Log 4 on the log retainers





## FUEL BED INSTALLATION

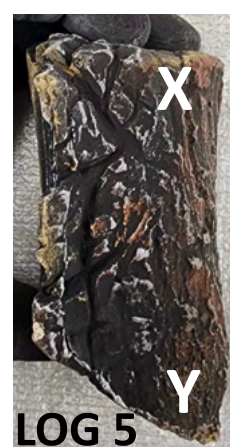
---

### DF700 Log Placement - Continued

5. Place 1x Log 6 on the log retainers



6. Place 1x Log 5 on the log retainers

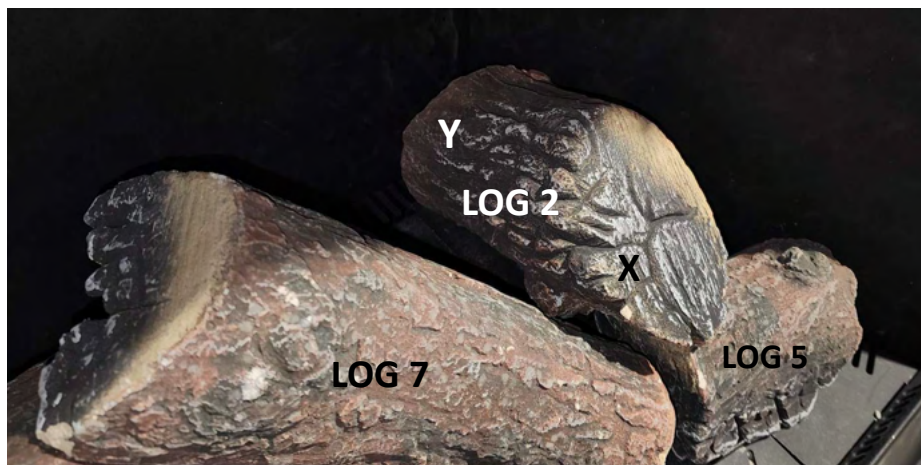




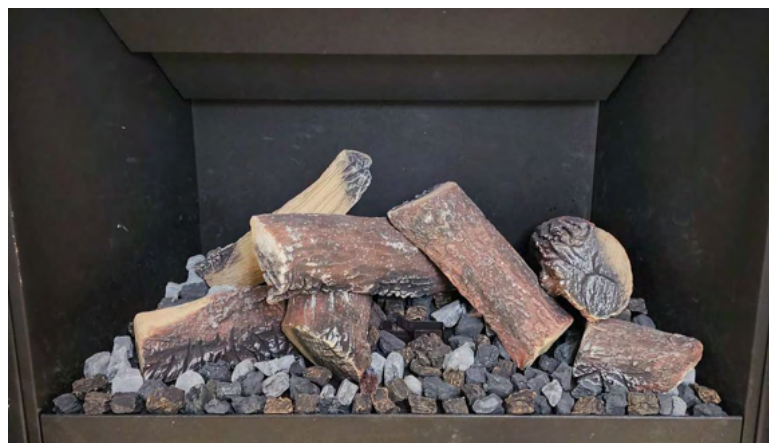
## FUEL BED INSTALLATION

### DF700 Log Placement - Continued

7. Place 1x Log 2 on the log retainers



8. Place 1 layer of ember bed on top of the burners



## FUEL BED INSTALLATION

---

### DF960 Log Placement

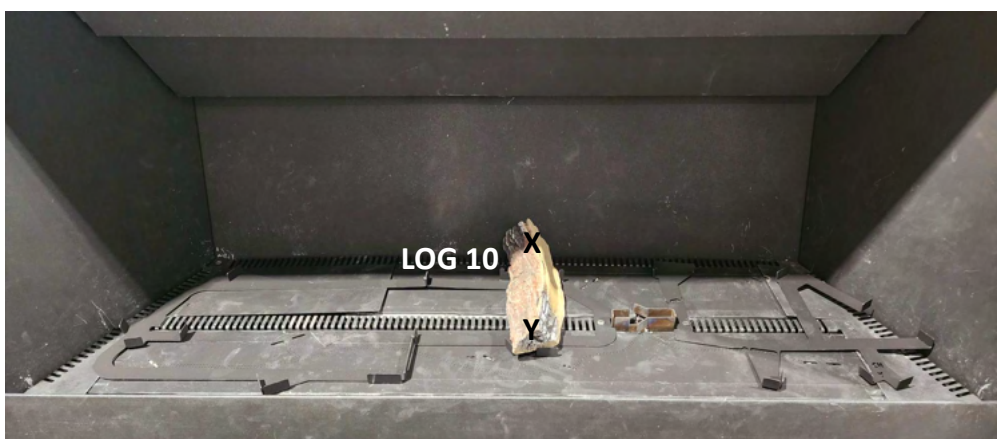
The following images displays a step-by-step process for correct log placement of the elm fuel bed for a DF960 model. The log retainers will display the orientation letter of the log used, alongside its X/Y position, to impart which log and which end should be placed in the retainer feature.

**Logs Needed: 1x Log 1, 1x Log 2, 1x Log 5, 1x Log 7, 1x Log 8, 1x Log 9, 1x Log 10 and 1x Log 11**

**NOTE: EVENLY PLACE A SINGLE LAYER OF EMBERS OR FLAKES AFTER THE LOGS HAVE BEEN LOCATED. EXCESS EMBERS OR FLAKES SHOULD NOT BE ADDED IF ONE EVEN LAYER HAS BEEN ACHIEVED.**

**NOTE: The embers must not cover the pilot or pilot guard. Logs must be located correctly as illustrated in this section or the warranty may void.**

1. Place 1x Log 10 on the log retainers





## FUEL BED INSTALLATION

---

### DF960 Log Placement - Continued

2. Place 1x Log 8 on the log retainers



3. Place 1x Log 11 on the log retainers



## FUEL BED INSTALLATION

### DF960 Log Placement - Continued

4. Place 1x Log 9 on the log retainers



5. Place 1x Log 2 on the log retainers





## FUEL BED INSTALLATION

### DF960 Log Placement Continued

6. Place 1x Log 7 on the log retainers



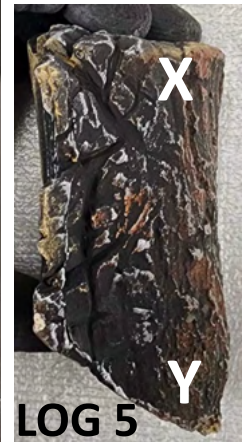
7. Place 1x Log 1 on the log retainers



## FUEL BED INSTALLATION

### DF960 Log Placement Continued

8. Place 1x Log 5 on the log retainers



9. Place 1 layer of ember bed on top of the burners

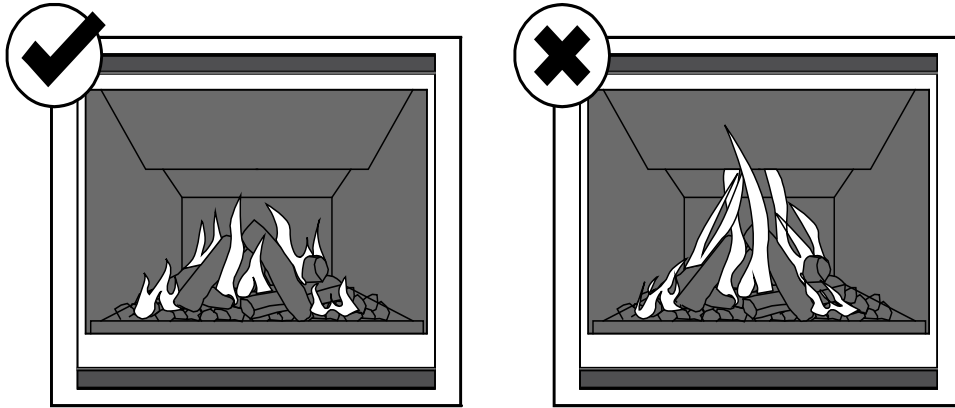


## FUEL BED INSTALLATION

---

### Flame Picture

An abnormal flame pattern will look long and stringy and may cause soot to build up inside the firebox.



An abnormal flame pattern will likely be the result of incorrect settings (jet size, burner aeration collar, flue restriction), and if present you must check these are correct before proceeding.

When checking flame picture ensure burners fully light on ignition, build up of embers or large embers can impede and cause breaks in the crosslighting.

If an abnormal flame pattern is still present or crosslighting is an issue, please contact Escea.

It is the responsibility of the installer to ensure a correct flame pattern.