

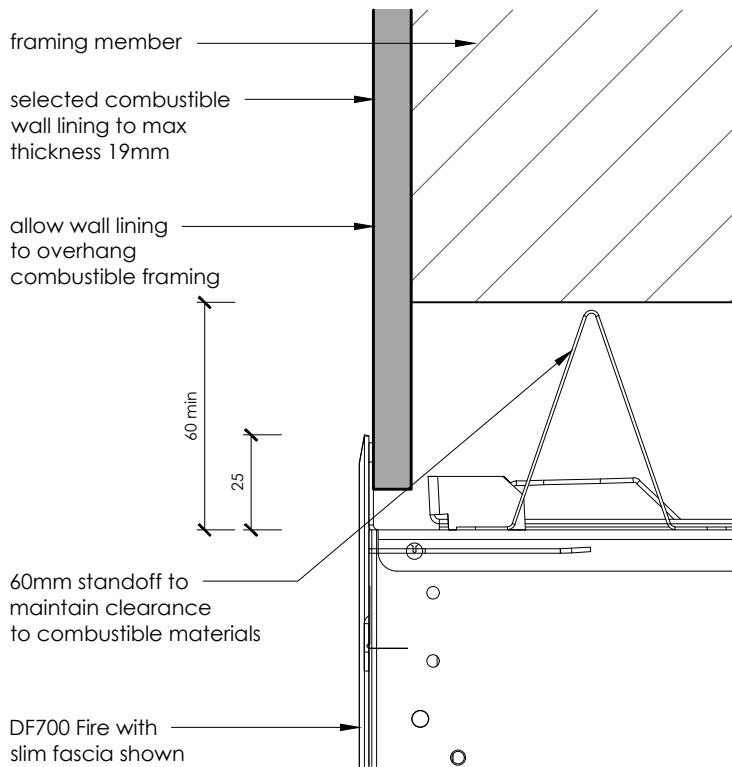
**IMPORTANT**

This technical sheet must be read in conjunction with the ESCEA DF Series Install Manual - the latest version can be found on our website [www.escea.com/nz/technical/](http://www.escea.com/nz/technical/)

Contact the ESCEA Architectural Advisory Team for assistance with installation of this fire - [aa@escea.com](mailto:aa@escea.com)

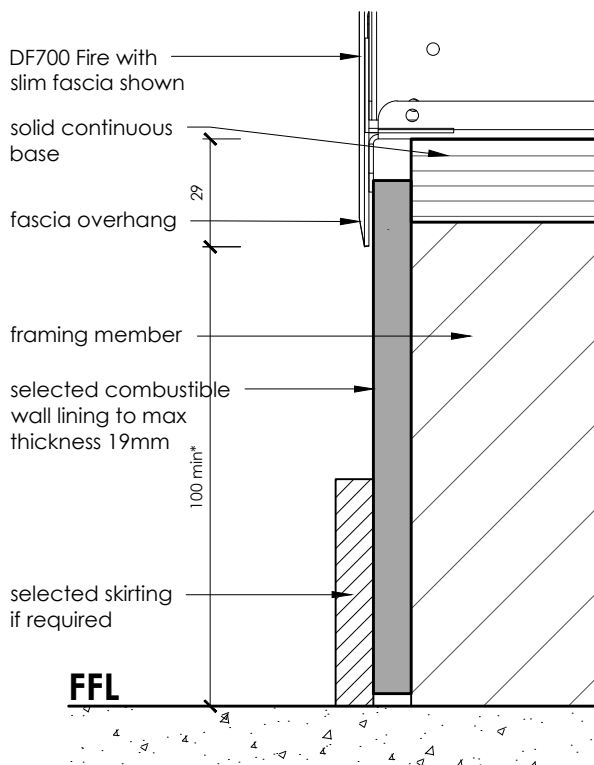
**note:**

- DF Series Fires have a **50mm** exhaust flue clearance, to combustible materials, for a minimum length directly from the fire chassis.
  - DF700** - 900mm
  - DF960** - 600mm
  - DFS730** - 900mm
- Give consideration to the 29mm overhang of the fascia when setting up the fire - firebox must be at least 30mm from nearest horizontal plane.
- **\*We recommend at least 100mm min** below fire from fascia base to floor when using heat sensitive flooring and to protect fire from excess lint intake into the fire electronics.



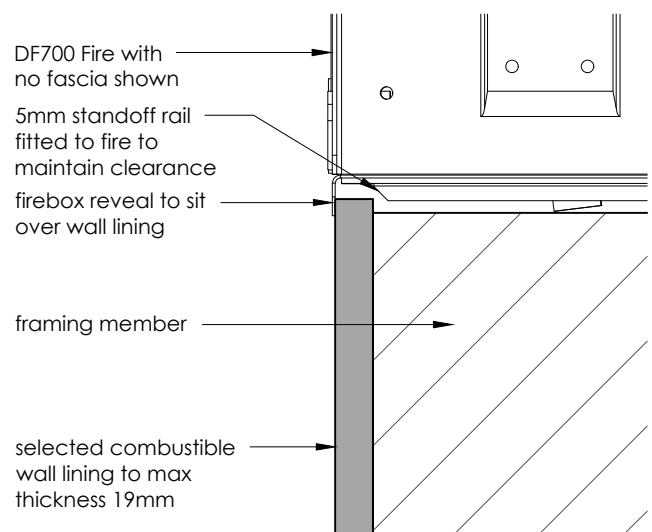
## Head Detail

scale 1:2



## Base Detail

scale 1:2



## Side Detail

scale 1:2

file: DF SERIES MASTER FILE.dwg	scale: <b>1:2</b>	ecn: <b>ECN-2690</b>	drawing no: <b>EDA-0054</b>	revision: <b>V. 01</b>	date: <b>04.10.2017</b>	drawn: <b>MG</b>
------------------------------------	----------------------	-------------------------	--------------------------------	---------------------------	----------------------------	---------------------