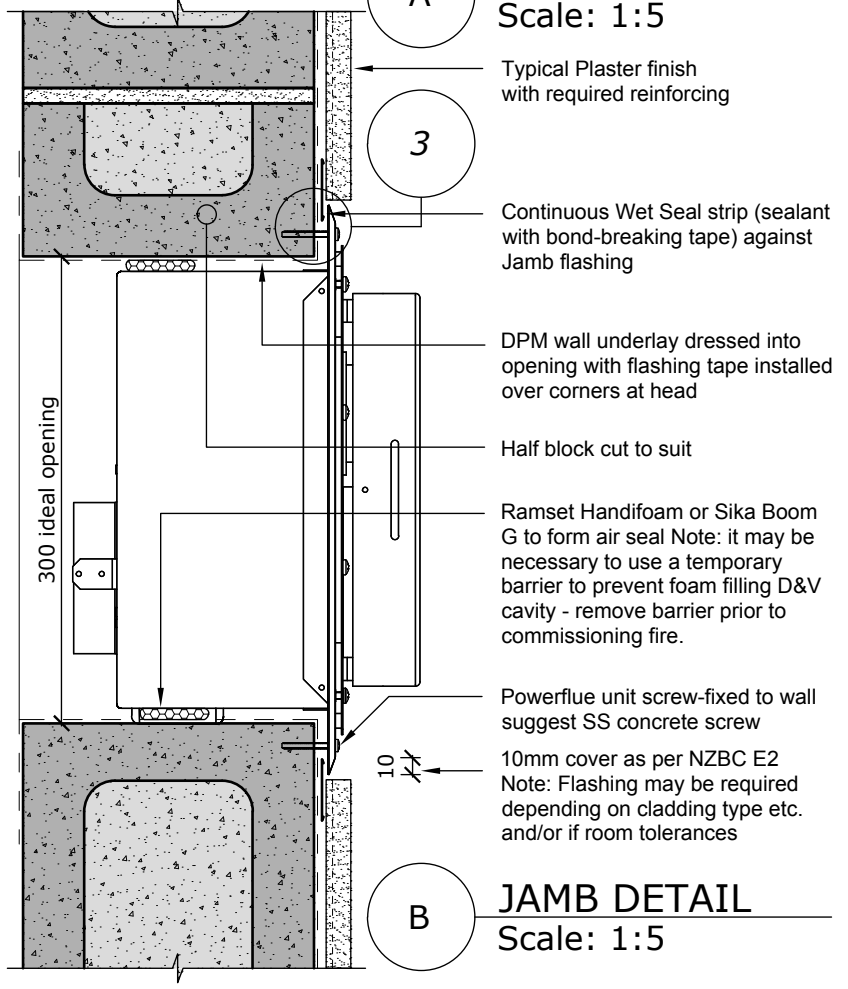
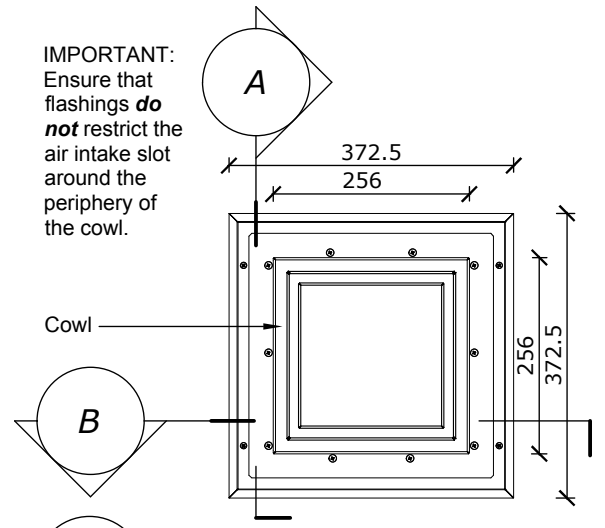


**A HEAD AND SILL**  
Scale: 1:5

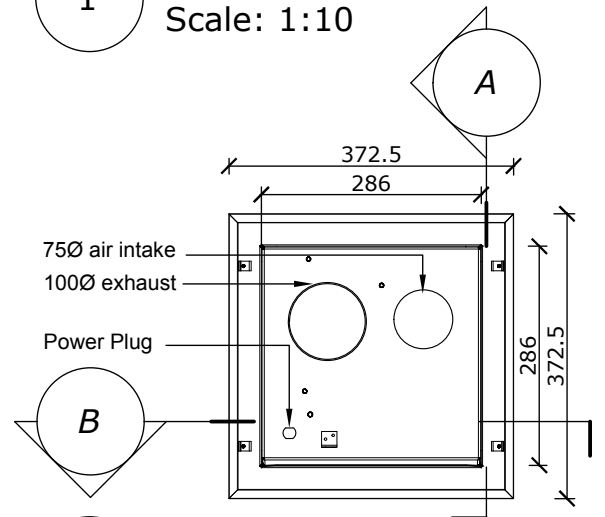


**B JAMB DETAIL**  
Scale: 1:5

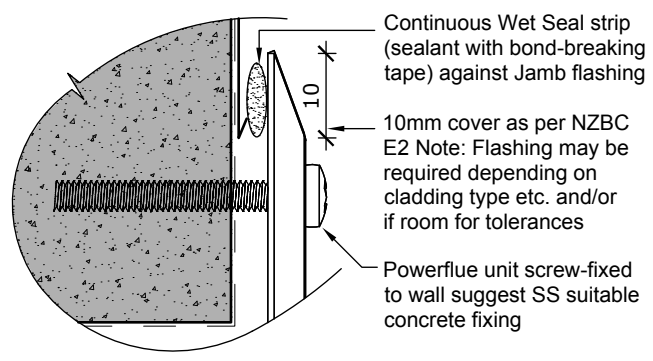
**IMPORTANT:**  
Ensure that flashings **do not** restrict the air intake slot around the periphery of the cowl.



**1 FRONT ELEVATION**  
Scale: 1:10



**2 REAR ELEVATION**  
Scale: 1:10



**3 FIXING DETAIL**  
Scale: 1:1

IDEAL HOLE/CAVITY For **Horizontal Powerflue** (mm)  
Without Side Brackets    With Side Brackets

X	Y	Z	X	Y	Z
300	300	175	360	300	175

NOTE: Horizontal power flue termination should be treated as a wall penetration please refer to NZBC E2 or equivalent for flashing as flashing specifications may change depending on type of cladding/wall structure and/or wind zone/spray zone.

