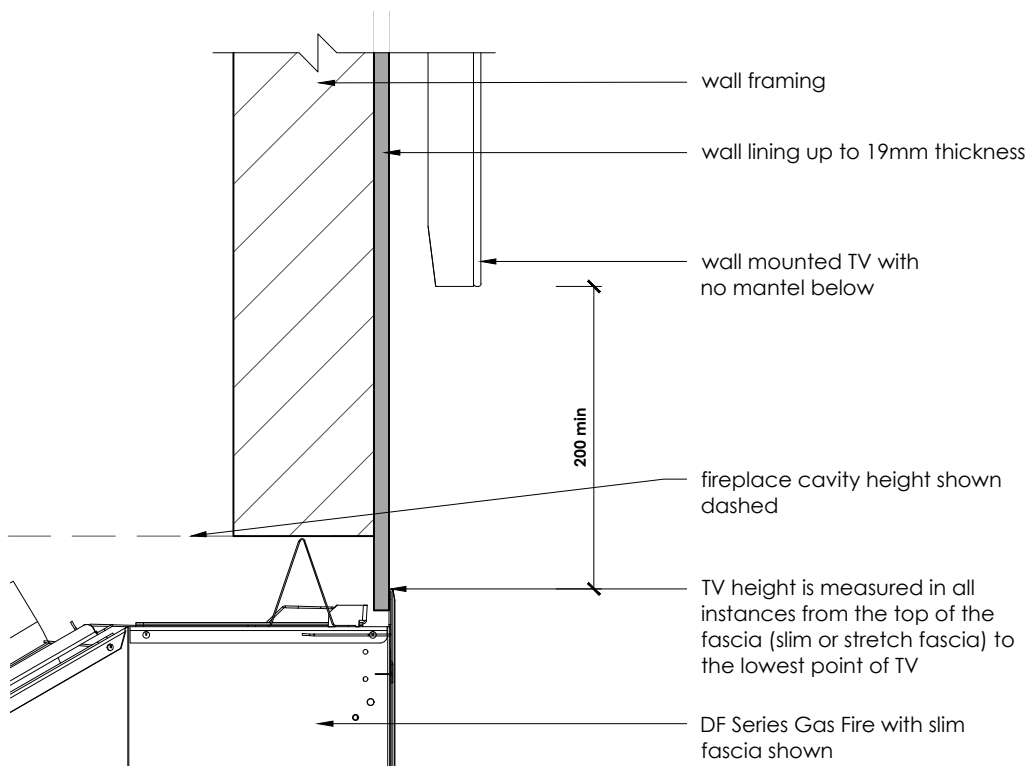


for further information on mantel or TV clearances refer to **Sec. B7** of the Escea DF Series Installation Manual which can be downloaded from our website - www.escea.com/nz/technical/

Mantel Clearances

scale 1:5



DF Series Fires have a **50mm** exhaust flue clearance, to combustible materials, for a minimum length directly from the fire chassis.
DF700 - 900mm
DF960 - 600mm
DFS730 - 900mm

IMPORTANT:
 This technical sheet must be read in conjunction with the Escea DF Series Installation Manual, the latest version can be found on our website www.escea.com/nz/technical/

Contact the **ESCEA Architectural Advisory Team** for assistance with installation of this fire - aa@escea.com

TV Clearances

scale 1:5

file: DF SERIES MASTER FILE.dwg	scale: 1:5	ecn: ECN-2690	drawing no: EDA-0057	revision: V. 01	date: 05.10.2017	drawn: MG
------------------------------------	----------------------	-------------------------	--------------------------------	---------------------------	----------------------------	---------------------