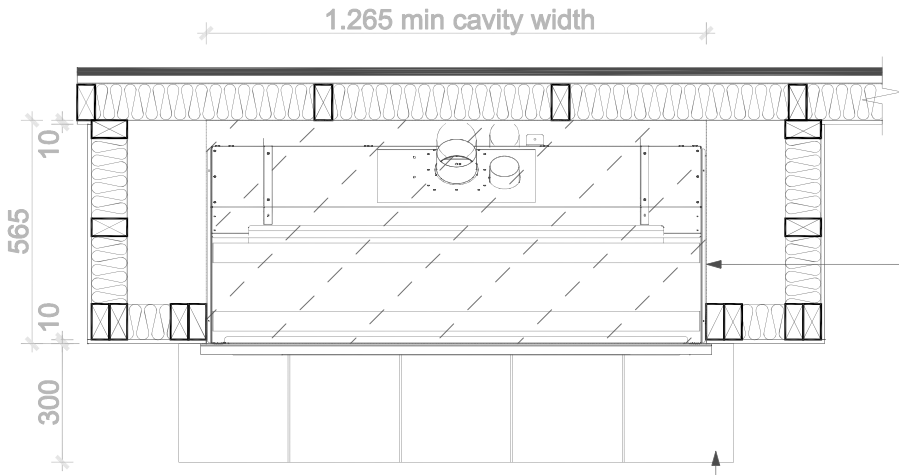


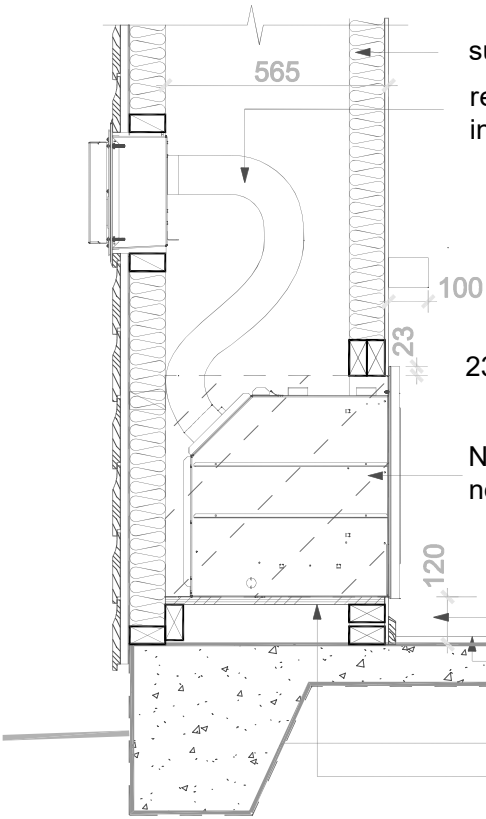
ESCEA DL1100: SQUARED FASCIA



1 PLAN
Scale: 1:20

leave base clear for gas inlet

either non-combustible hearth or fire installed 100mm min above floor - refer written instructions for further detail



suggest you insulate this wall too refer other sheet for Powerflue installation details

mantle is optional at 200mm minimum

23mm fascia cover to top of cavity

NO requirement for non-combustible materials

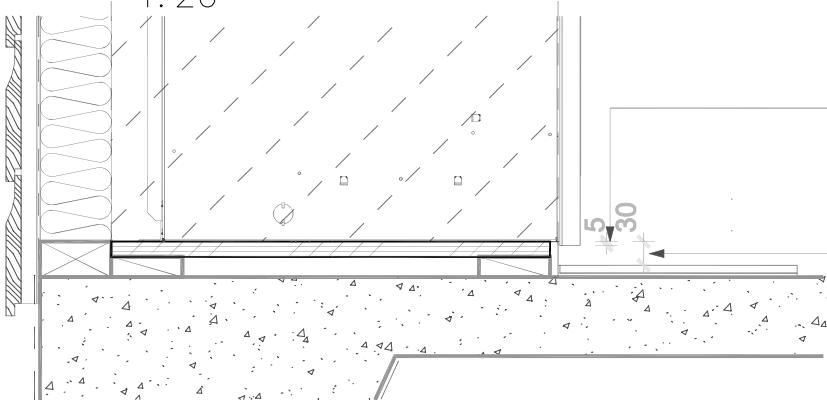
120 min if no hearth to allow for 20mm combustible floor coverings ie carpet
floor coverings ie carpet

floor/packing can be anything solid to minimise vibration - suggest plywood screwed and glued - no requirement for non-combustible materials



4 FASCIA DIMENSIONS
Scale: 1:20

2 CROSS SECTION
Scale: 1:20



3 FLOOR DETAIL
Scale: 1:10

5mm fascia cover to base of cavity.

30mm min clearance from base of fire to top of non-combustible floor or finished hearth surface as appliance draws air from here

min 300mm wide hearth if less than 100mm clear between base of cavity & combustible material below fire.