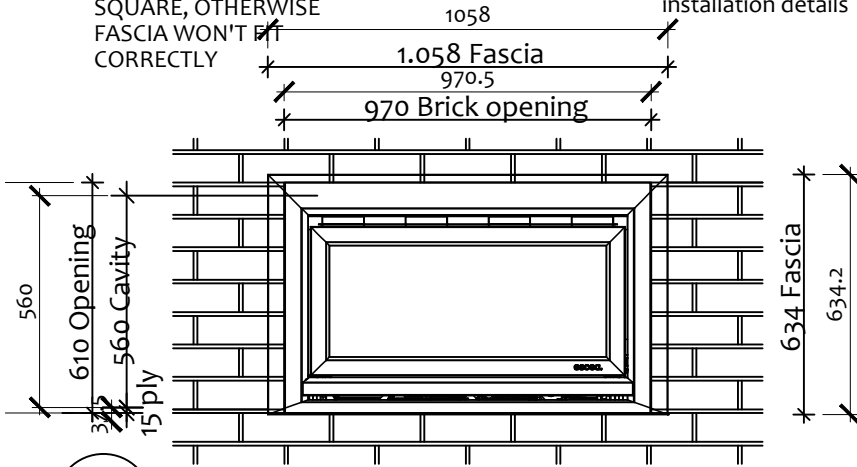


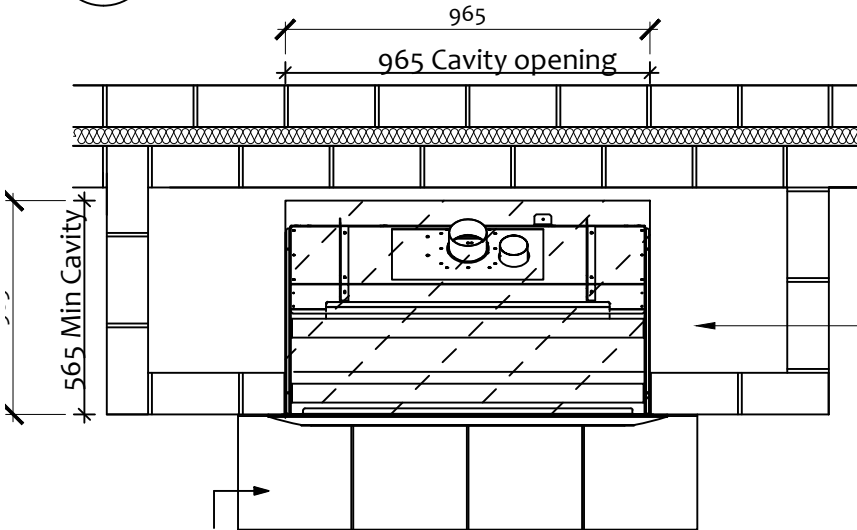
ESCEA DL850: BEVELLED FASCIA in BRICK

NOTE:
WALL LINING MUST BE
SQUARE, OTHERWISE
FASCIA WON'T FIT
CORRECTLY

refer other sheet for Powerflue
installation details



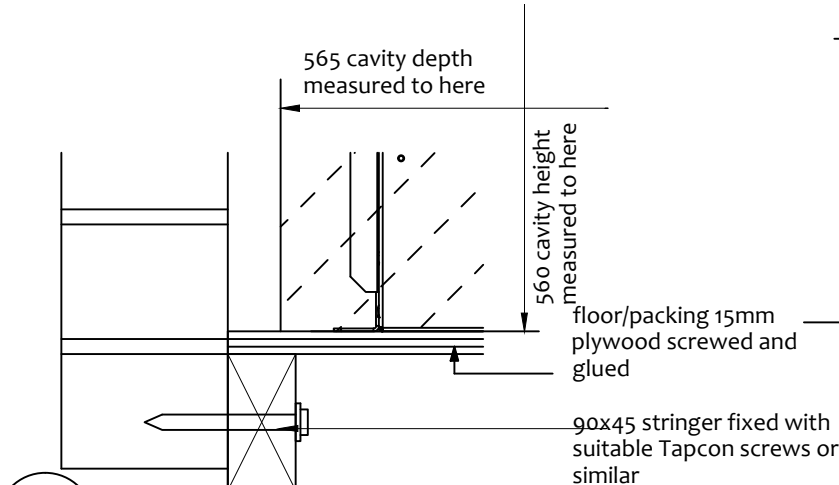
4 **ELEVATION**
Scale: 1:20



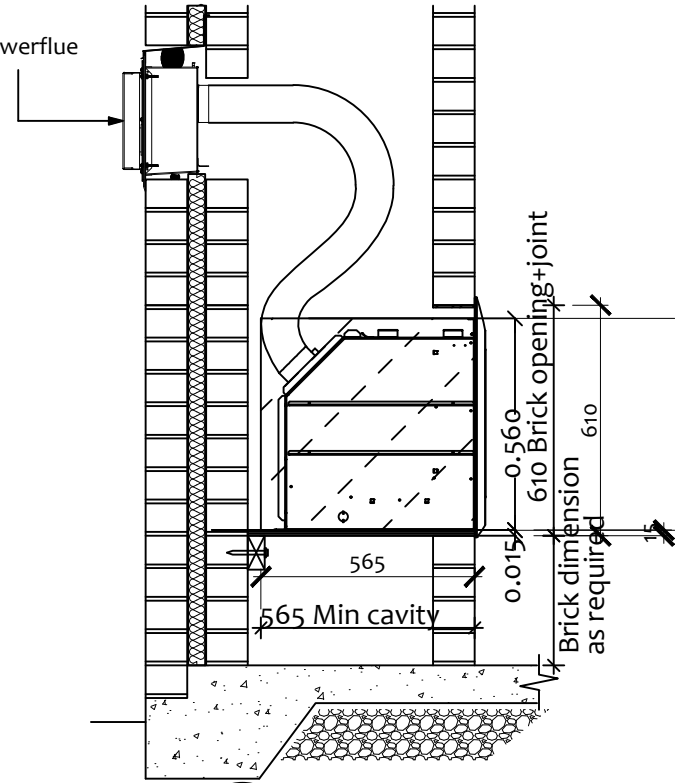
either non-combustible hearth
or fire installed 100mm min
above floor - refer written
instructions for further detail

1 **PLAN**
Scale: 1:20

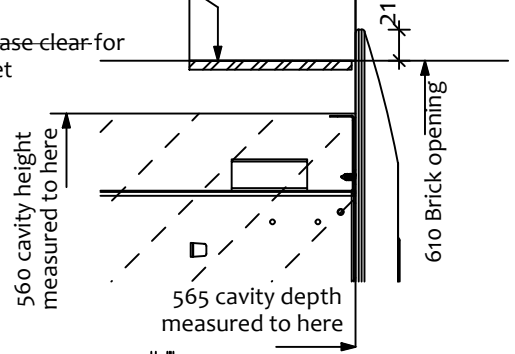
NOTE:
ELECTRICIAN TO PROVIDE
EASILY ACCESSIBLE ISOLATING
POWER SWITCH TO APPLIANCE,
AND NETWORK CABLE BACK
TO ROUTER



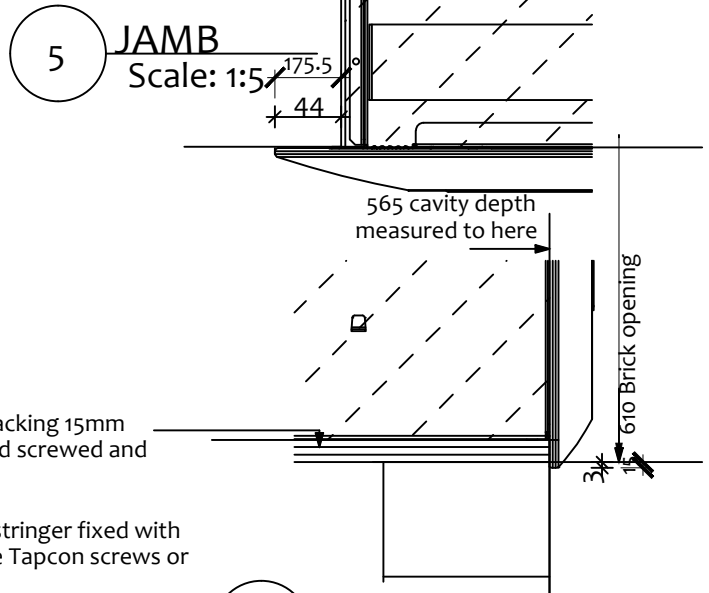
7 **BASE**
Scale: 1:5



2 **CROSS SECTION**
Scale: 1:20



4 **HEAD**
Scale: 1:5



6 **BASE**
Scale: 1:5