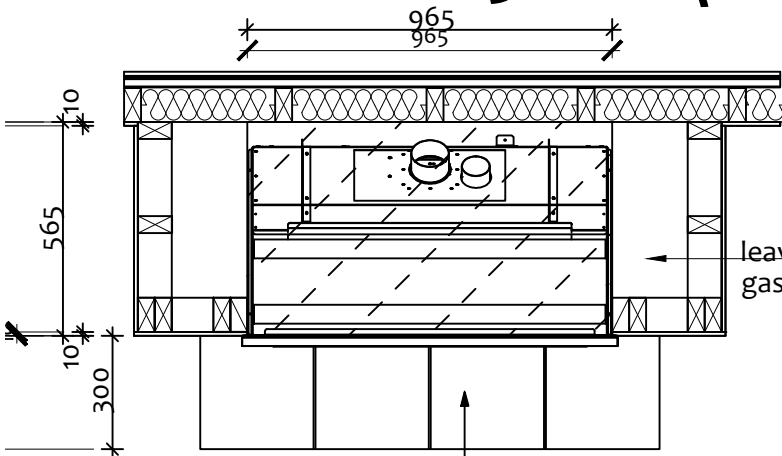


ESCEA DL850: SQUARED LITE FASCIA



1 PLAN
Scale: 1:20

either non-combustible hearth or fire installed 100mm min above floor - refer written instructions for further detail

suggest you insulate this wall too

refer other sheet for Powerflue installation details

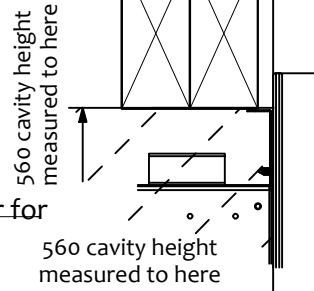
mantle is optional

23mm fascia cover to top of cavity if in loadbearing wall size as lintel

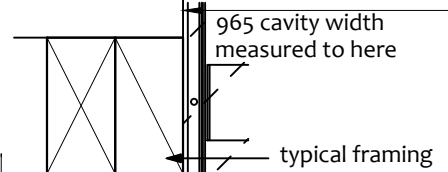
NO requirement for non-combustible materials

120 min if no hearth to allow for 20mm combustible floor coverings ie carpet floor coverings ie carpet

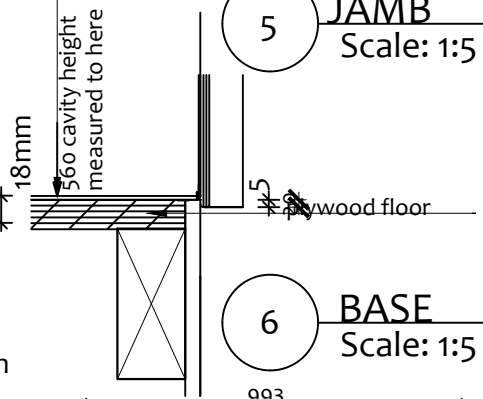
floor/packing can be anything solid to minimise vibration - suggest plywood screwed and glued - no requirement for non-combustible materials



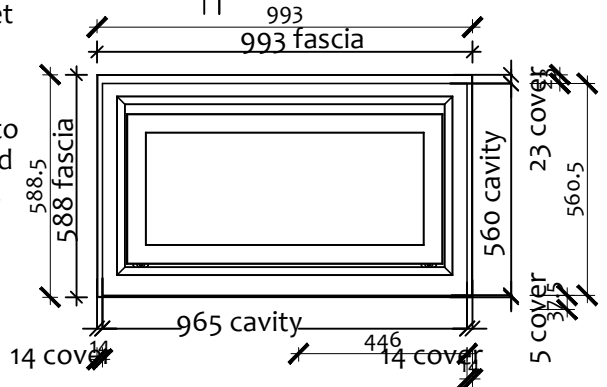
4 HEAD
Scale: 1:5



5 JAMB
Scale: 1:5



6 BASE
Scale: 1:5

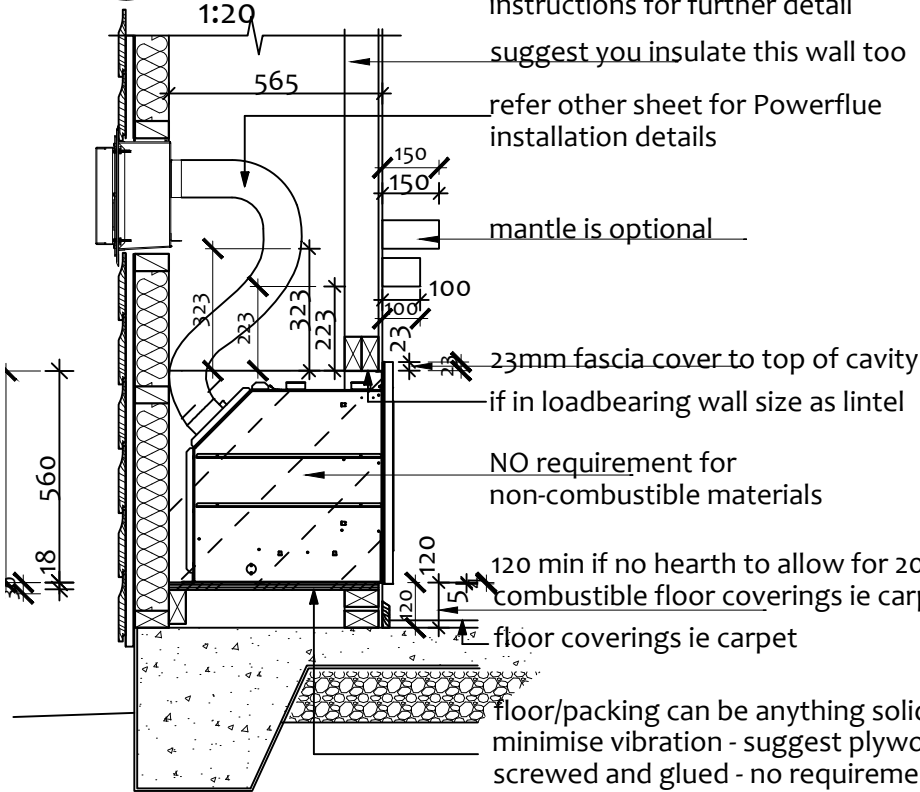


7 FASCIA DIMENSIONS
Scale: 1:20

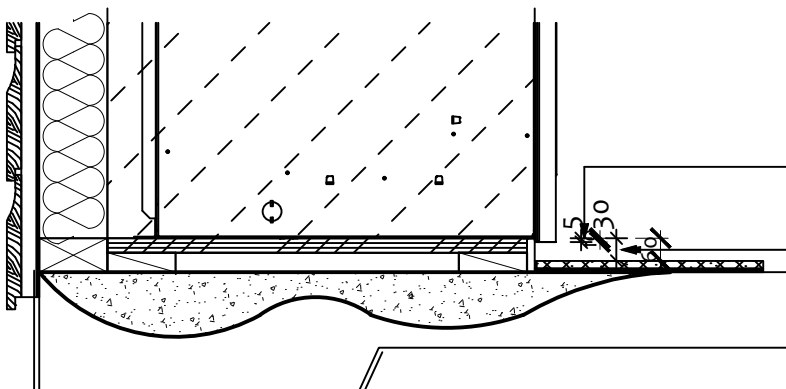
5mm fascia cover to base of cavity.

30mm min clearance from base of fire to top of non-combustible floor or finished hearth surface as appliance draws air from here

min 300mm wide hearth if less than 100mm clear between base of cavity & combustible material below fire.



2 CROSS SECTION
Scale: 1:20



3 FLOOR DETAIL
Scale: 1:10