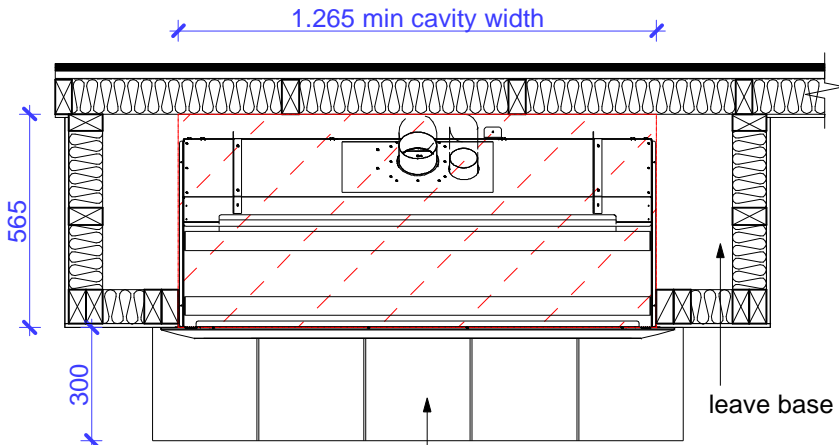
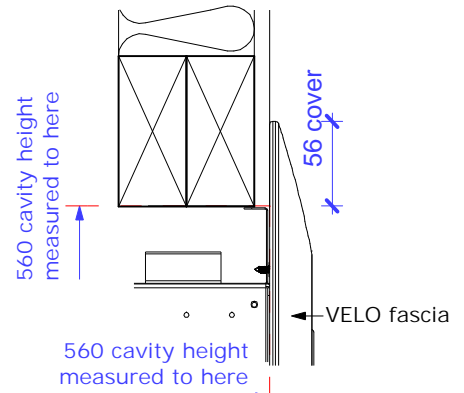


# ESCEA DL1100: VELO FASCIA



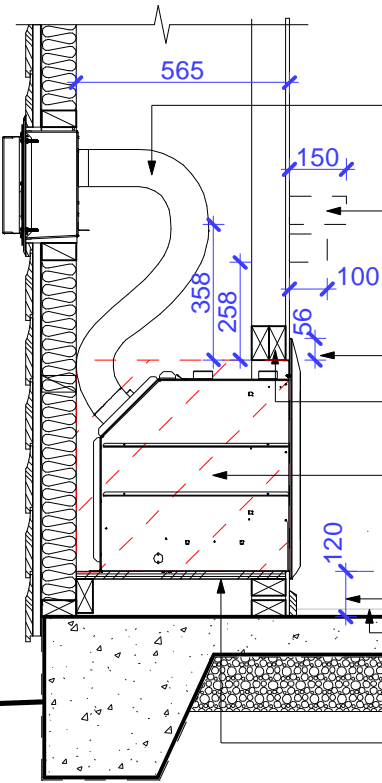
1 PLAN  
Scale: 1:20

either non-combustible hearth or fire installed 100mm min above floor - refer written instructions for further detail



4 HEAD  
Scale: 1:5

560 cavity height measured to here



2 CROSS SECTION  
Scale: 1:20

refer other sheet for Powerflue installation details

mantle is optional

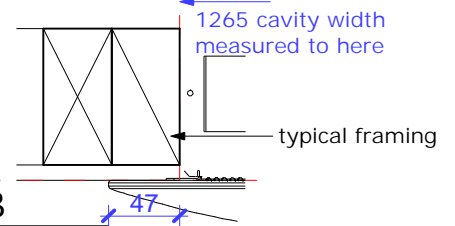
56mm fascia cover to top of cavity if in loadbearing wall size as lintel

NO requirement for non-combustible materials

120 min if no hearth to allow for 20mm combustible floor coverings ie carpet

floor coverings ie carpet

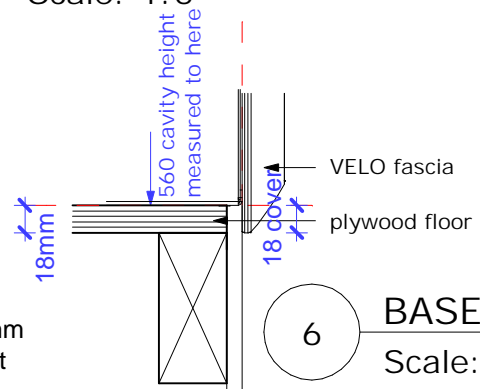
floor/packing can be anything solid to minimise vibration - suggest plywood screwed and glued - no requirement for non-combustible materials



5 JAMB  
Scale: 1:5

1265 cavity width measured to here

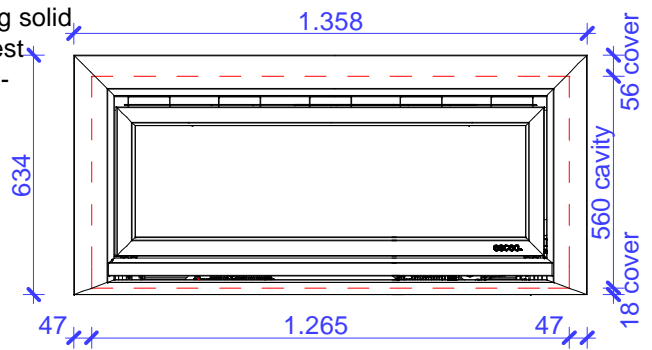
typical framing



6 BASE  
Scale: 1:5

560 cavity height measured to here

VELO fascia  
plywood floor



7 FASCIA  
Scale: 1:20

1.358

634

47

1.265

47

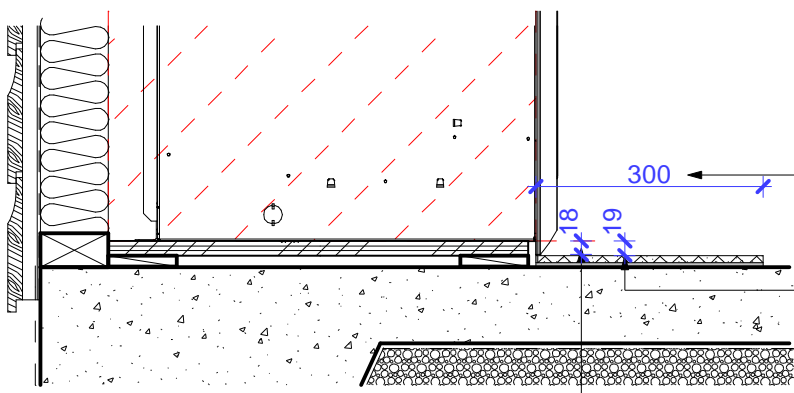
1.358

56 cover

560 cavity

56 cover

18 cover



3 FLOOR DETAIL  
Scale: 1:5

min 300mm wide hearth if less than 100mm clear between base of cavity & combustible material below fire.

19mm clearance from base of fire to top of non-combustible floor or finished hearth surface as appliance draws air from here

18mm fascia cover to base of cavity.