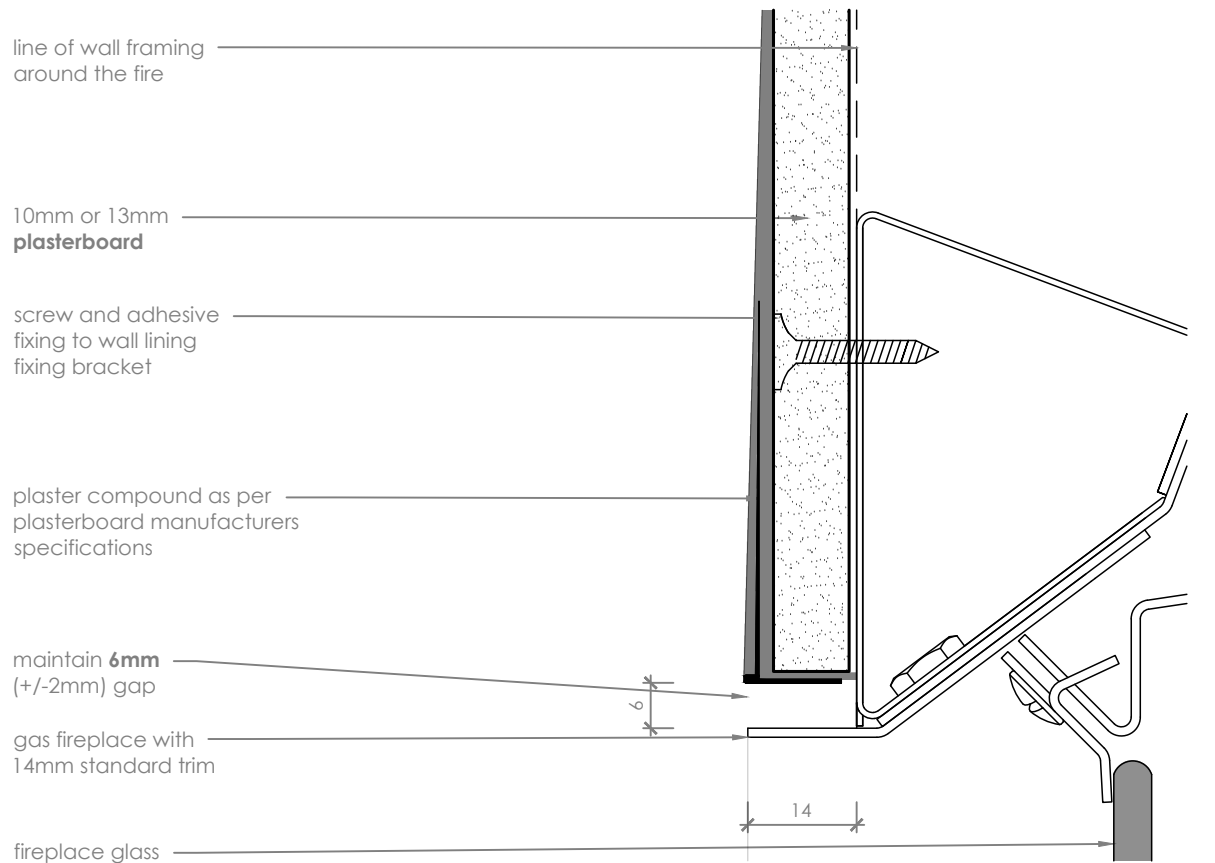


Prolonged unprotected exposure to heat may be detrimental to the appearance or long term performance of a wall lining. Combustible and heat sensitive wall linings or finishes must not protrude past the trim, to the glass viewing area. Some scenarios will require the use of an Extended Trim Kit, or a custom solution, to provide adequate protection.



**Plasterboard Detail A**

scale 1:1

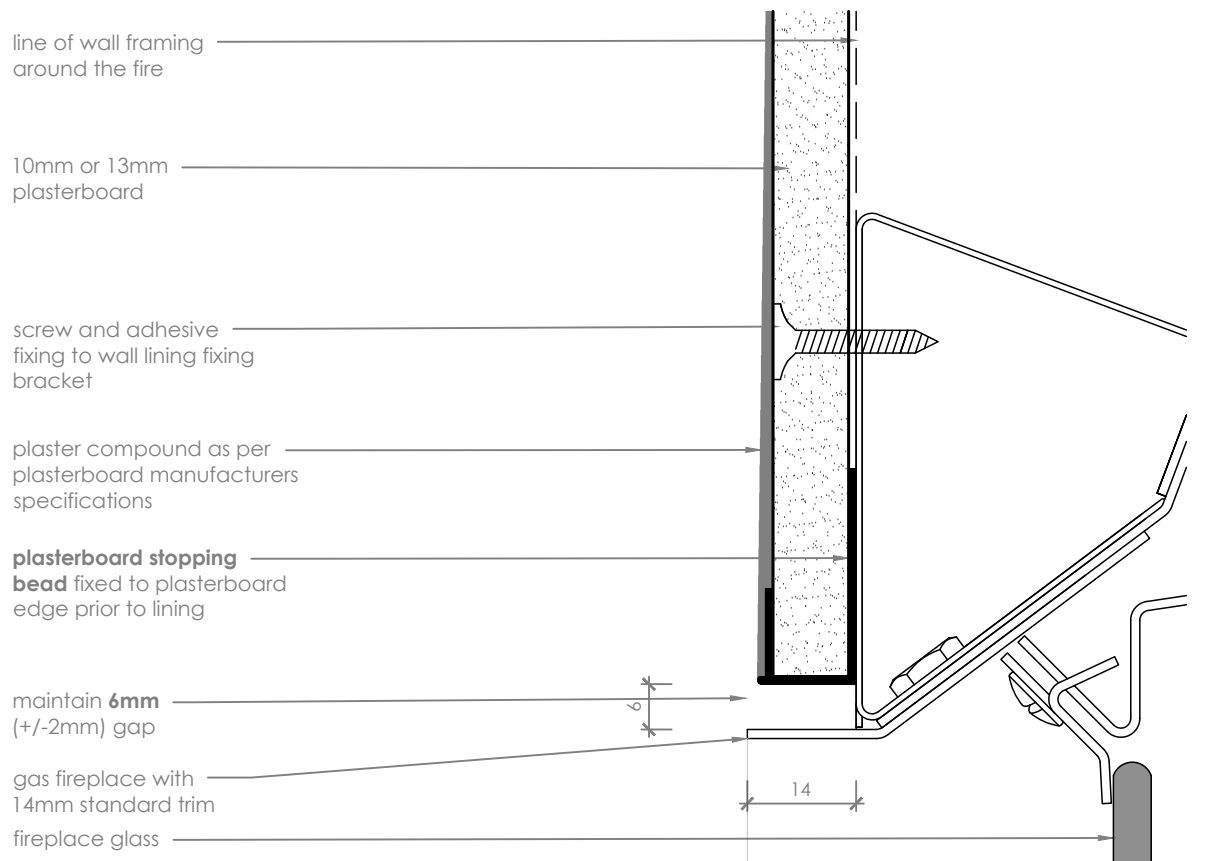
**Notes:**

- All dimensions are in mm. DO NOT SCALE OFF THESE DRAWINGS
- This detail is to assist in the installation of a **frameless finish** to a DS, DN or KB Series Gas Fireplace.
- This detail is applicable for all four sides of the fireplace glass viewing area.
- Escea recommends when using these finishing methods that **10mm plasterboard** is used.
- Black fireplace trim must be able to be removed - ensure any adhesive or compound is kept clear.
- **Do not excessively push back wall board when fixing it to the fire chassis** - use large daubs of adhesive to the appliance chassis, apply wall lining and flush finish with edge of the fire reveal.
- This technical sheet must be read in conjunction with the requisite Escea or MODE Installation Manual, the latest version can be found on our website at [www.escea.com](http://www.escea.com) or [www.stokefires.com](http://www.stokefires.com)

GENERAL CONSTRUCTION AND FINISHES SHOWN INDICATIVE ONLY

Contact the ESCEA Architectural Advisory Team for assistance with the specification of this fire - [aa@escea.com](mailto:aa@escea.com)

Prolonged unprotected exposure to heat may be detrimental to the appearance or long term performance of a wall lining. Combustible and heat sensitive wall linings or finishes must not protrude past the trim, to the glass viewing area. Some scenarios will require the use of an Extended Trim Kit, or a custom solution, to provide adequate protection.



**Plasterboard Detail B**

scale 1:1

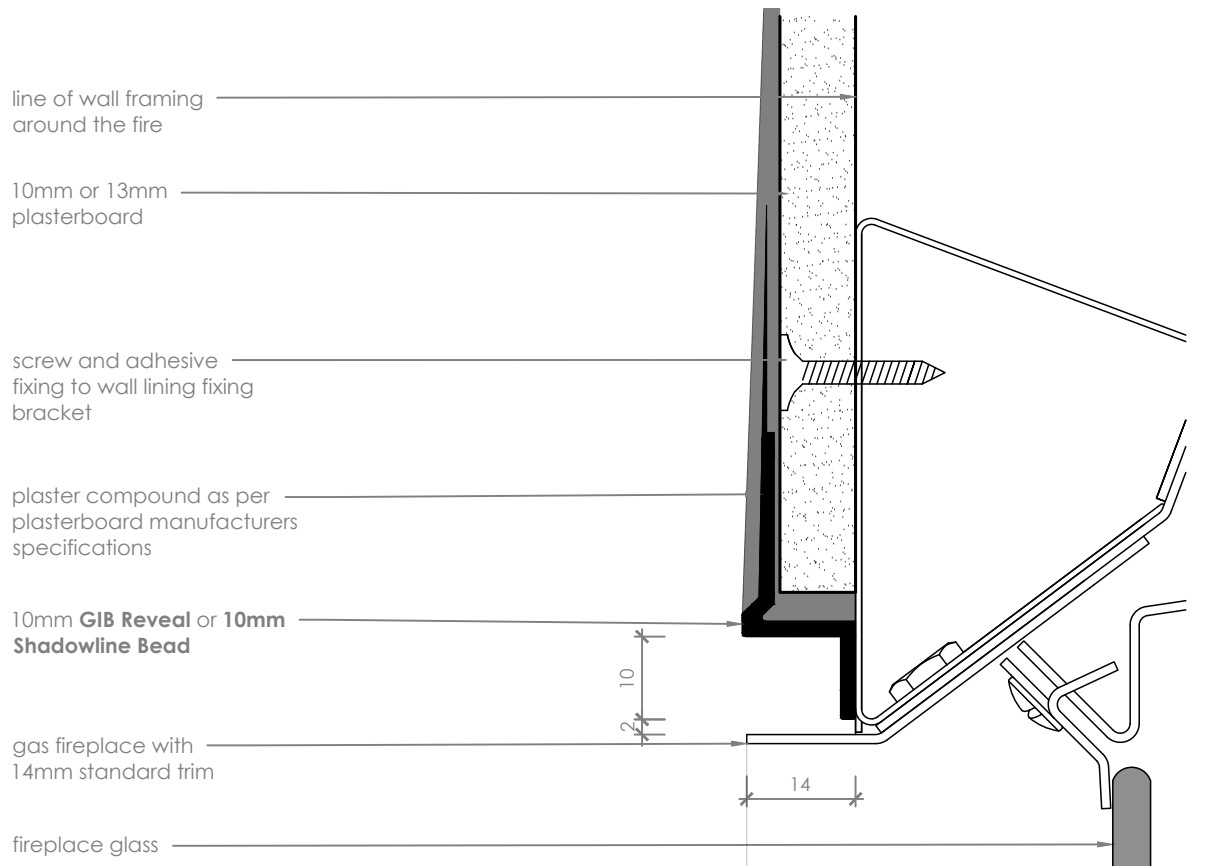
**Notes:**

- All dimensions are in mm. DO NOT SCALE OFF THESE DRAWINGS
- This detail is to assist in the installation of a **frameless finish** to a DS, DN or KB Series Gas Fireplace.
- This detail is applicable for all four sides of the fireplace glass viewing area.
- Escea recommends when using these finishing methods that **10mm plasterboard** is used.
- Use care when sanding plaster to avoid scratching black fireplace reveals.
- Black fireplace trim must be able to be removed - ensure any adhesive or compound is kept clear.
- **Do not excessively push back wall board when fixing it to the fire chassis** - use large daubs of adhesive to the appliance chassis, apply wall board and flush finish with edge of the fire reveal.
- This technical sheet must be read in conjunction with the requisite Escea or MODE Installation Manual, the latest version can be found on our website at [www.escea.com](http://www.escea.com) or [www.stokefires.com](http://www.stokefires.com)

GENERAL CONSTRUCTION AND FINISHES SHOWN INDICATIVE ONLY

Contact the ESCEA Architectural Advisory Team for assistance with the specification of this fire - [aa@escea.com](mailto:aa@escea.com)

Prolonged unprotected exposure to heat may be detrimental to the appearance or long term performance of a wall lining. Combustible and heat sensitive wall linings or finishes must not protrude past the trim, to the glass viewing area. Some scenarios will require the use of an Extended Trim Kit, or a custom solution, to provide adequate protection.



**Plasterboard Detail C**

scale 1:1

## Notes:

- All dimensions are in mm. DO NOT SCALE OFF THESE DRAWINGS
- This detail is to assist in the installation of a **frameless finish** to a DS, DN, or KB Series Gas Fireplace.
- This detail is applicable to all four sides of the fireplace glass viewing area.
- Escea recommends when using these finishing methods that **10mm plasterboard** is used.
- Use care when sanding plaster to avoid scratching black fireplace reveals.
- Black fireplace trim must be able to be removed - ensure any beading, adhesive or compound is kept clear.
- **Do not excessively push back wall board when fixing it to the fire chassis** - use large daubs of adhesive to the chassis, apply wall board and flush finish with edge of the fire reveal.
- This technical sheet must be read in conjunction with the requisite Escea or MODE Installation Manual, the latest version can be found on our website at [www.escea.com](http://www.escea.com) or [www.stokefires.com](http://www.stokefires.com)

GENERAL CONSTRUCTION AND FINISHES SHOWN INDICATIVE ONLY

Contact the ESCEA Architectural Advisory Team for assistance with the specification of this fire - [aa@escea.com](mailto:aa@escea.com)