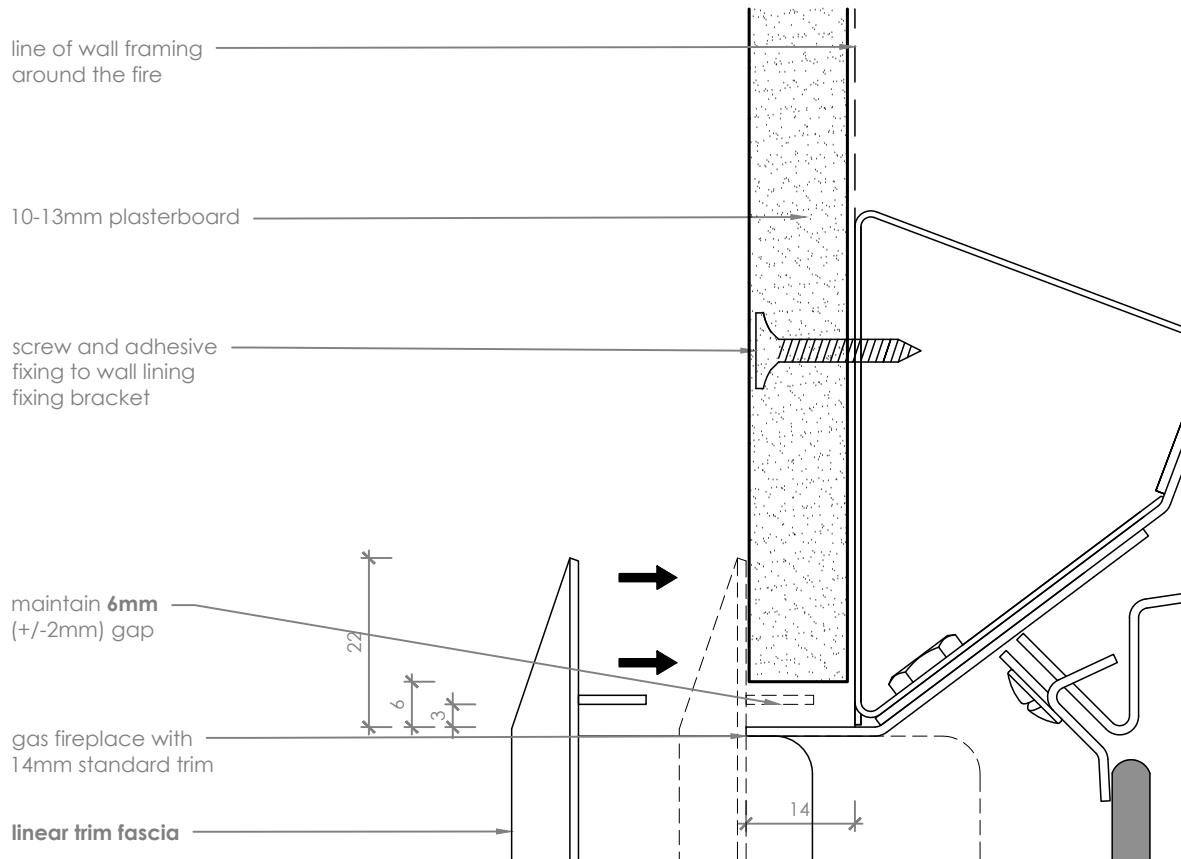


Prolonged unprotected exposure to heat may be detrimental to the appearance or long term performance of a wall lining. Combustible and heat sensitive wall linings or finishes must not protrude past the trim, to the glass viewing area. Some scenarios will require the use of an Extended Trim Kit, or a custom solution, to provide adequate protection.



Plasterboard w. Linear Trim scale 1:1

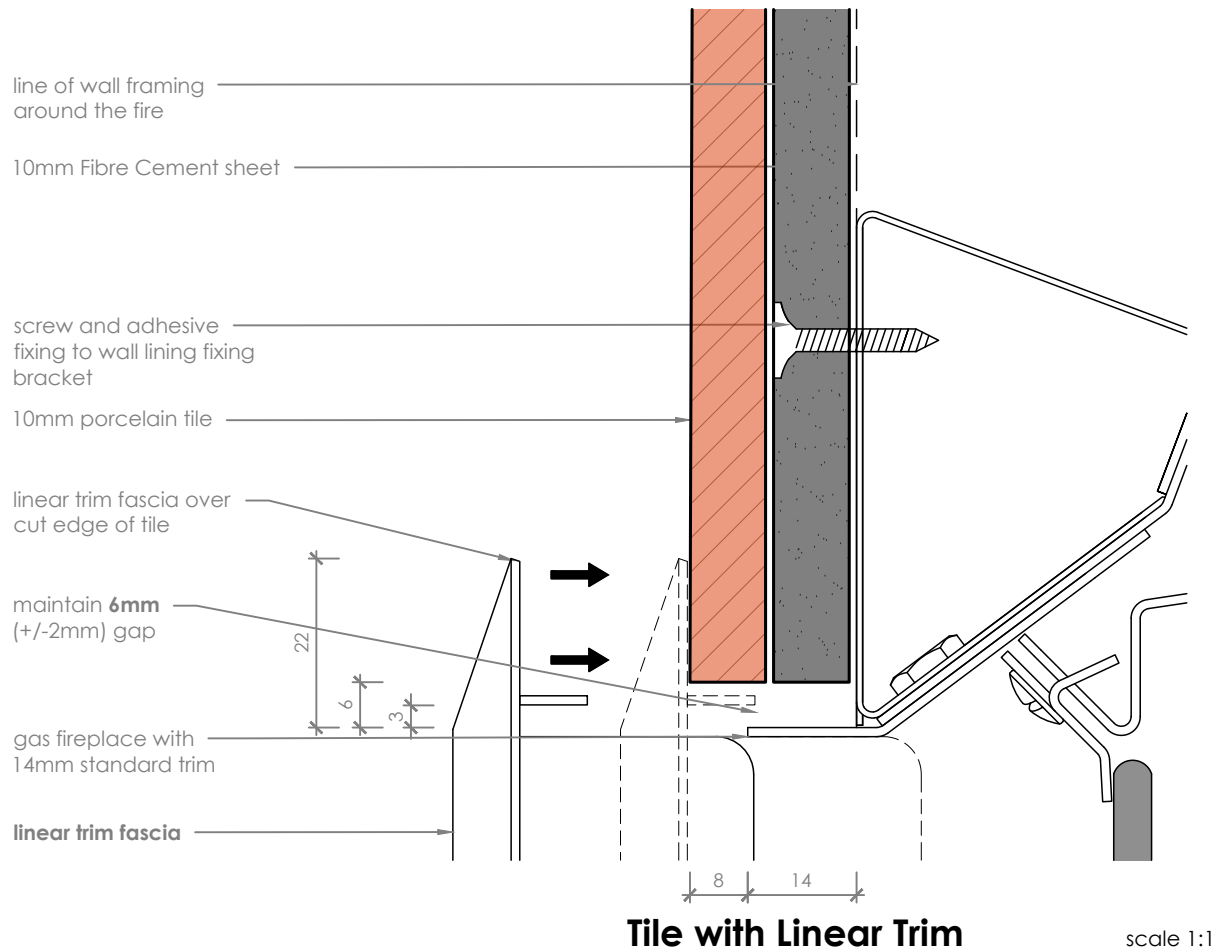
Notes:

- DO NOT SCALE OFF THESE DRAWINGS. All dimensions are in mm.
- This detail is to assist in the installation of a **plasterboard finish** using the **Linear Trim Fascia** to a DS or KB Series Gas Fireplace.
- Black fireplace trims must be able to be removed - ensure any adhesive or compound is kept clear. Use large daubs of adhesive to the appliance chassis, apply wall lining and flush finish with edge of the fire reveal.
- The upper portion of the Linear Trim Fascia fits above the black reveal of the fireplace viewing area. Ensure the correct orientation and gaps are maintained.
- This technical sheet must be read in conjunction with the requisite Escea or MODE Installation Manual, the latest version can be found on our website at www.escea.com or www.stokefires.com

GENERAL CONSTRUCTION AND FINISHES SHOWN INDICATIVE ONLY

Contact the ESCEA Architectural Advisory Team for assistance with the specification of this fire - aa@escea.com

Prolonged unprotected exposure to heat may be detrimental to the appearance or long term performance of a wall lining. Combustible and heat sensitive wall linings or finishes must not protrude past the trim, to the glass viewing area. Some scenarios will require the use of an Extended Trim Kit, or a custom solution, to provide adequate protection.



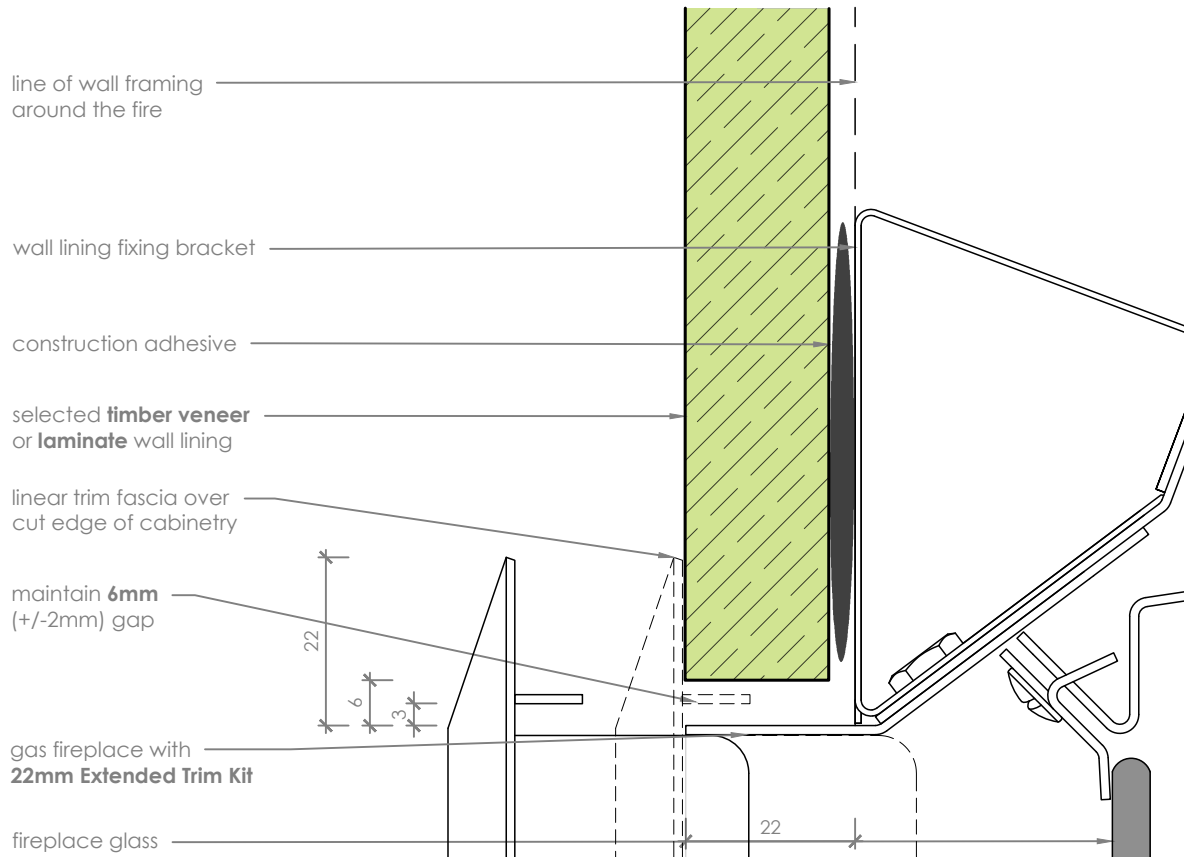
Notes:

- DO NOT SCALE OFF THESE DRAWINGS. All dimensions are in mm.
- This detail is to assist in the installation of a **Porcelain or Stone Tile Finish** using the **Linear Trim Fascia** to a DS or KB Series Gas Fireplace.
- Black fireplace trims must be able to be removed - ensure any adhesive or compound is kept clear. Use large daubs of adhesive to the appliance chassis; apply wall lining and flush finish with edge of the fire reveal.
- The upper portion of the Linear Trim Fascia fits above the black reveal of the fireplace viewing area. Ensure the correct orientation and gaps are maintained.
- This technical sheet must be read in conjunction with the requisite Escea or MODE Installation Manual, the latest version can be found on our website at www.escea.com or www.stokefires.com

GENERAL CONSTRUCTION AND FINISHES SHOWN INDICATIVE ONLY

Contact the ESCEA Architectural Advisory Team for assistance with the specification of this fire - aa@escea.com

Prolonged unprotected exposure to heat may be detrimental to the appearance or long term performance of a wall lining. Combustible and heat sensitive wall linings or finishes must not protrude past the trim, to the glass viewing area. Some scenarios will require the use of an Extended Trim Kit, or a custom solution, to provide adequate protection.



Cabinetry with Linear Trim scale 1:1

Notes:

- All dimensions are in mm. DO NOT SCALE OFF THESE DRAWINGS
- This detail is to assist in the installation of a **Cabinetry or Veneer Panel** to a DS or KB Series Gas Fireplace, where a finished edge is not possible.
- This detail is applicable for all four sides of the fireplace glass viewing area.
- The upper portion of the Linear Trim Fascia fits above the black reveal of the fireplace viewing area. Ensure the correct orientation and gaps are maintained.
- Cabinetry panel can be directly bonded to the outer metalwork of the appliance. Use large daubs of adhesive to the appliance chassis, apply lining and flush finish with edge of the fire reveal.
- Black fireplace trims must be able to be removed - ensure any adhesive or compound is kept clear.
- This technical sheet must be read in conjunction with the requisite Escea or MODE Installation Manual, the latest version can be found on our website at www.escea.com or www.stokefires.com

GENERAL CONSTRUCTION AND FINISHES SHOWN INDICATIVE ONLY

Contact the ESCEA Architectural Advisory Team for assistance with the specification of this fire - aa@escea.com