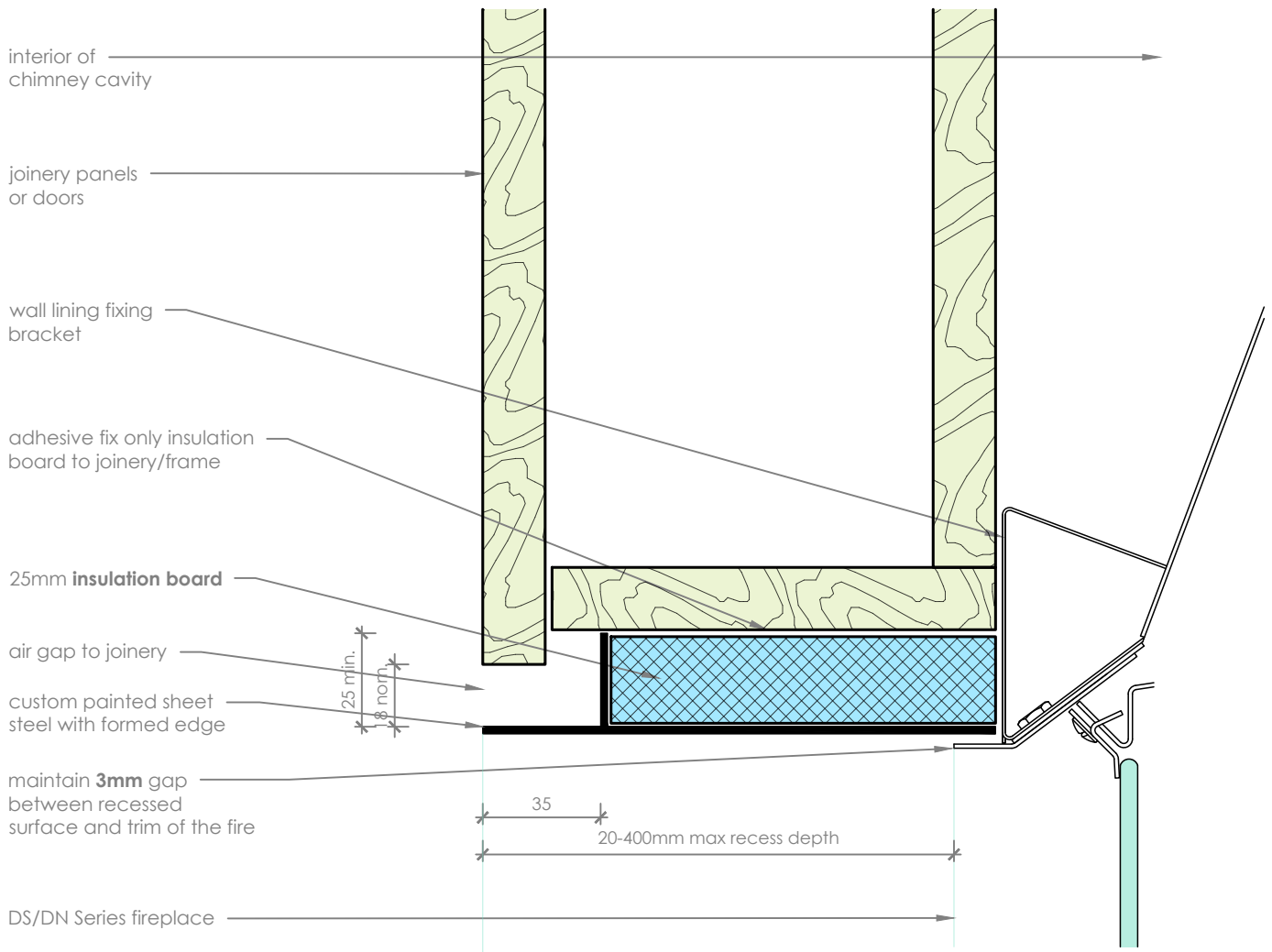


Prolonged unprotected exposure to heat may be detrimental to the appearance or long term performance of a wall lining or structural material. Choose materials for the recessed surfaces to be heat resistant and non-combustible.



Applicable for:

DS1150 DN1150 Peninsula
 DS1400 DN1150 Corner
 DS1650
 DS1900

Recessed Detail A

scale 1:2

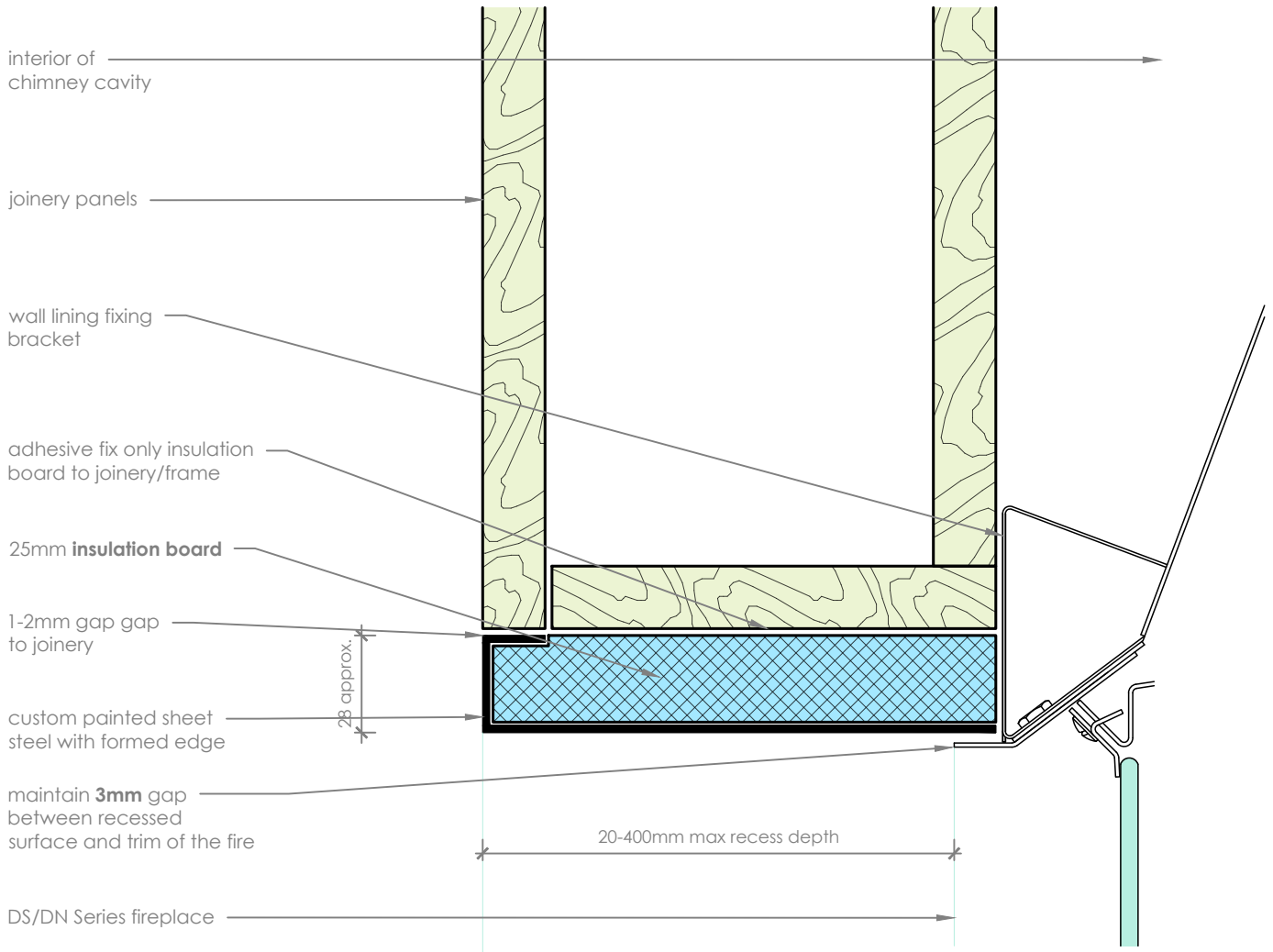
Notes:

- All dimensions are in mm. DO NOT SCALE OFF THESE DRAWINGS
- This detail sheet is to assist in the installation of a **recessed finish** to a DS or DN Series Gas Fireplace.
- Escea recommends the use of 25mm Skamotec 225 only, as an insulation board.
- Clearances defined in this detail are to provide a measure of safety for **heat transfer into combustible materials** and **convected heat onto combustible materials**. Escea takes no responsibility for material selection.
- Black fireplace reveals must be able to be removed.
- This technical sheet must be read in conjunction with the Escea DS Series, DN Series, or DS1900 Installation Manual, the latest version can be found on our website at www.escea.com

GENERAL CONSTRUCTION AND FINISHES SHOWN INDICATIVE ONLY

Contact the ESCEA Architectural Advisory Team for assistance with the specification of this fire - aa@escea.com

Prolonged unprotected exposure to heat may be detrimental to the appearance or long term performance of a wall lining or structural material. Choose materials for the recessed surfaces to be heat resistant and non-combustible.



Applicable for:

DS1150 DN1150 Peninsula
 DS1400 DN1150 Corner
 DS1650
 DS1900

Recessed Detail B

scale 1:2

Notes:

- All dimensions are in mm. DO NOT SCALE OFF THESE DRAWINGS
- This detail sheet is to assist in the installation of a **recessed finish** to a DS or DN Series Gas Fireplace.
- Escea recommends the use of 25mm Skamotec 225 only, as an insulation board.
- Clearances defined in this detail are to provide a measure of safety for **heat transfer into combustible materials** and **convected heat onto combustible materials**. Escea takes no responsibility for material selection.
- Black fireplace reveals must be able to be removed.
- This technical sheet must be read in conjunction with the Escea DS Series, DN Series, or DS1900 Installation Manual, the latest version can be found on our website at www.escea.com

GENERAL CONSTRUCTION AND FINISHES SHOWN INDICATIVE ONLY

Contact the ESCEA Architectural Advisory Team for assistance with the specification of this fire - aa@escea.com