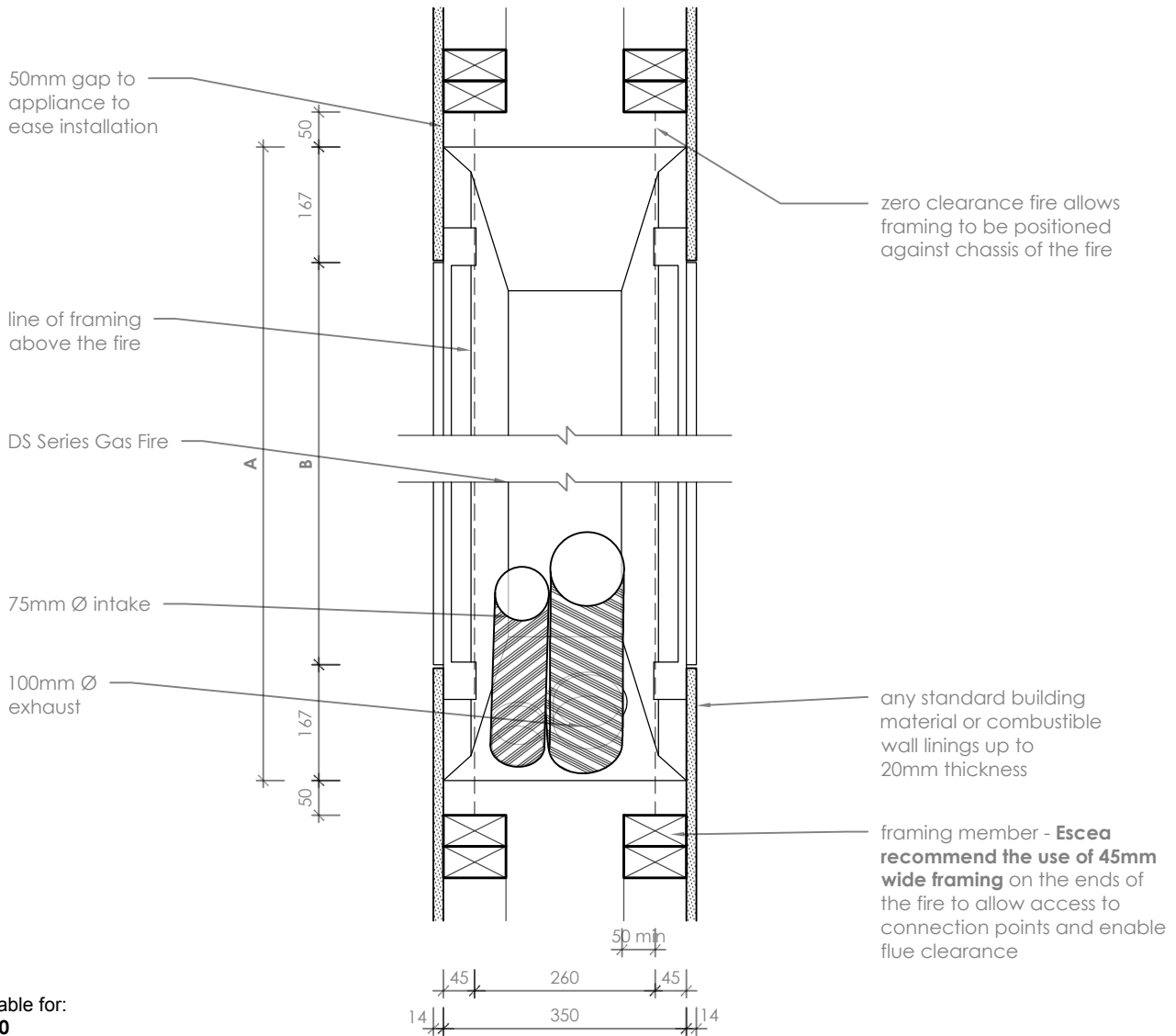


**Elevation** scale 1:10

Applicable for:  
**DS1150**  
**DS1400**  
**DS1650**

- notes:**
- DO NOT SCALE OFF THESE DRAWINGS. All dimensions are in mm.
  - This detail sheet is to assist in the installation the DS Series Gas Fire.
  - 50mm clearance to combustible surfaces for the first 1200mm of flue - Zero clearance beyond this point.
  - Wall board can be **bonded directly to the faces of the appliance** using construction adhesive. Screw fixing of wall board only in to wall lining fixing bracket above the glass opening.
  - DS Series Fires can be reversed to have flue spigots and connection points from the left hand side of the cavity.
  - **Do not excessively push back wall board when fixing it to the fire chassis** - use large daubs of adhesive to the chassis and apply wall board and flush finish with edge of the fire reveal.
  - Refer to the **D-Series Materials Guide** for information on materials selection around an Escea Fire. This can be downloaded from [www.escea.com](http://www.escea.com)
  - Double sided DS Fires can have a **Room Air Restrictor** added to one side only, restricting convected airflow from the fire, up to approximately 75% of normal.
  - This technical sheet must be read in conjunction with the **Escea DS Series Installation Manual**, the latest version can be found on our website at [www.escea.com](http://www.escea.com)

GENERAL CONSTRUCTION AND FINISHES SHOWN INDICATIVE ONLY  
 Contact the **ESCEA Architectural Advisory Team** for assistance with the specification of this fire - [aa@escea.com](mailto:aa@escea.com)



Applicable for:  
**DS1150**  
**DS1400**  
**DS1650**

## Plan

scale 1:10

DS Series Fire		DS1150	DS1400	DS1650
Appliance Width	<b>A</b>	1401	1693	1987
Viewing Area Width	<b>B</b>	1067	1359	1653

- notes:**
- DO NOT SCALE OFF THESE DRAWINGS. All dimensions are in mm.
  - This detail sheet is to assist in the installation the DS Series Gas Fire.
  - 50mm clearance to combustible surfaces for the first 1200mm of flue - Zero clearance beyond this point.
  - Wall board can be **bonded directly to the faces of the appliance** using construction adhesive. Screw fixing of wall board only in to wall lining fixing bracket above the glass opening.
  - DS Series Fires can be reversed to have flue spigots and connection points from the left hand side of the cavity.
  - **Do not excessively push back wall board when fixing it to the fire chassis** - use large daubs of adhesive to the chassis and apply wall board and flush finish with edge of the fire reveal.
  - Refer to the **D-Series Materials Guide** for information on materials selection around an Escea Fire. This can be downloaded from [www.escea.com](http://www.escea.com)
  - Double sided DS Fires can have a **Room Air Restrictor** added to one side only, restricting convected airflow from the fire, up to approximately 75% of normal.
  - This technical sheet must be read in conjunction with the **Escea DS Series Installation Manual**, the latest version can be found on our website at [www.escea.com](http://www.escea.com)

GENERAL CONSTRUCTION AND FINISHES SHOWN INDICATIVE ONLY  
 Contact the ESCEA Architectural Advisory Team for assistance with the specification of this fire - [aa@escea.com](mailto:aa@escea.com)