

complete cavity and wall linings can be combustible materials as D series fires are "zero rated".

if in loadbearing wall, size as lintel/beam, including fixings

typical weatherproof window flashing in your district

finish reveal prior to installation

100mm min from glass

typical window, could be aluminium, steel, timber, PVC

Allow 300mm in cavity for ducting and 400mm if duct fan in cavity

refer other sheet for flue installation details

if in loadbearing wall, size as lintel/beam, including fixings NOTE: beam max width 50mm to accommodate flue

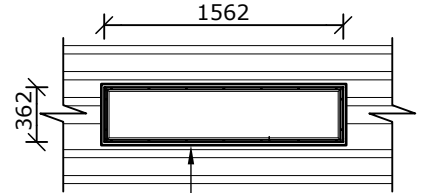
optional mantle 250mm min from edge of appliance glass viewing window for fixing

portion of lining extending past framing can be glued to firebox with typical wallboard adhesive, eg Gibfix All Bond, if lining is more than 10mm may want to specify additional GIB Trim Kit (optional accessory)

use metal finishing bead, eg Gib Stopping Angle to suit lining thickness

leave base side clear for connections (RHS but check prior)

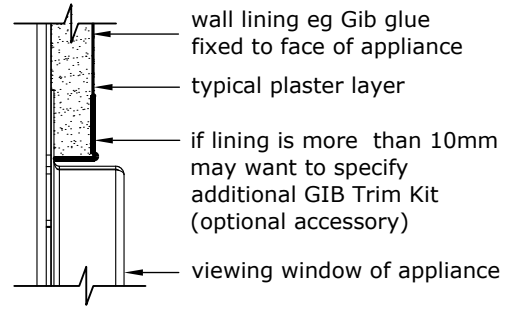
INSIDE REVEAL, APPROX, CONFIRM ON SITE



consider appearance of flashing and trim - may look dissimilar if matching adjacent windows

4

**ELEVATION**  
Scale: 1:50



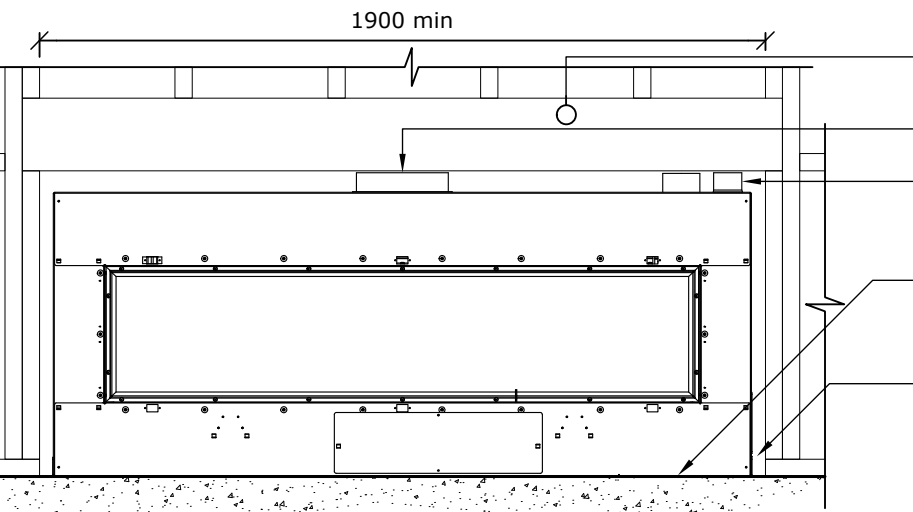
A

**EDGE DETAIL**  
Scale: 1:2

1

**CROSS SECTION**  
Scale: 1:20

NOTE: kit to convert standard DX1500 to double sided should be ordered with the fire



2

**ELEVATION**  
Scale: 1:20

NOTES:

1. Designer must consider ducting as part of fire detailing.

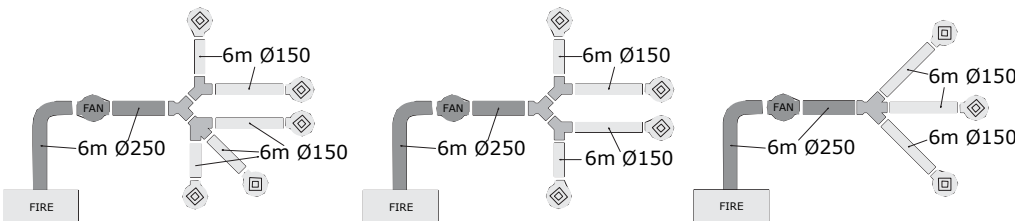
2. Fire may not operate correctly if duct is crushed, restricted or poorly installed. There must be 3 vent outlets each with a surface area of 300x100mm (0.03m<sup>2</sup>) or equivalent.

3. Frame up suitable support structure for inline fan from 90x45mm timber min - refer install instructions for suggested noise isolation.

4. Duct fan installations in which the fan will be in a wall cavity require more care. Please Refer to installation manual.

3

**DUCTING SCENARIOS**  
Scale: NTS



**escea.**  
| Ph +64 3 478 8220 | Direct +64 3 478 8237  
| Web www.escea.com

**Escea Ltd.**  
17 Carnforth Street  
Dunedin, 9018  
New Zealand

DRAWING TITLE:  
**DX1500: NO FASCIA DOUBLE SIDED EXTERNAL**

SCALE: AT A4: AS SHOWN	DATE: 18/01/2016	DRAWN BY: BC	CHECKED: RM
DRAWING NO: EAD0001	ECN NO: ECN2142	REVISION NO: 0004	

ELECTRICIAN TO PROVIDE ISOLATING POWER SWITCH TO APPLIANCE, AND NETWORK CABLE BACK TO ROUTER