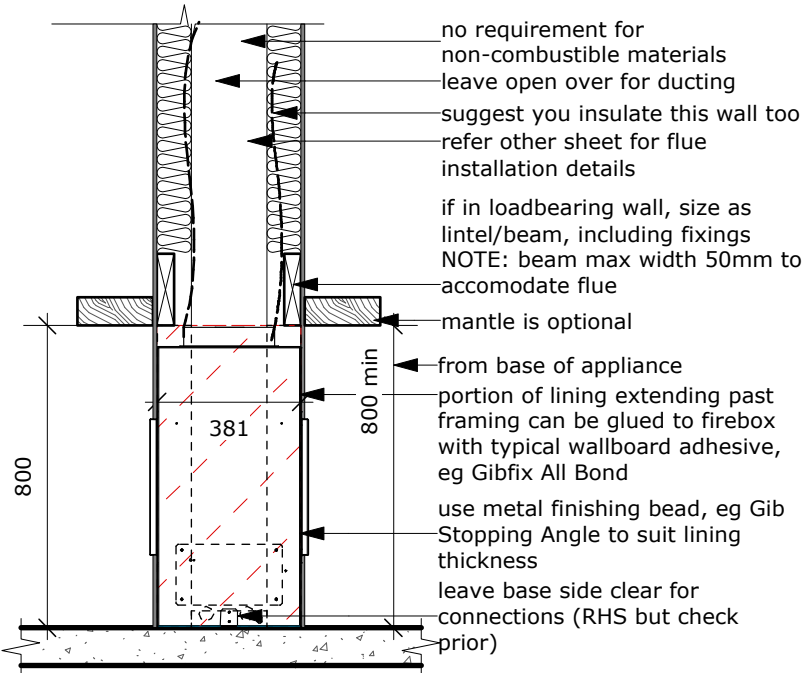
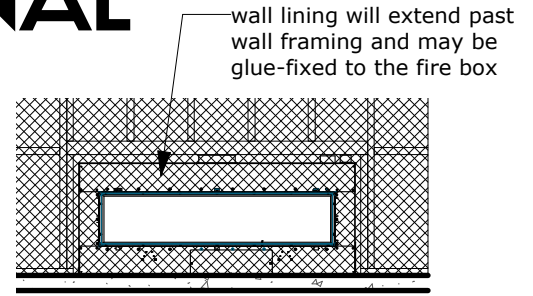


# ESCEA DX1500 : NO FASCIA

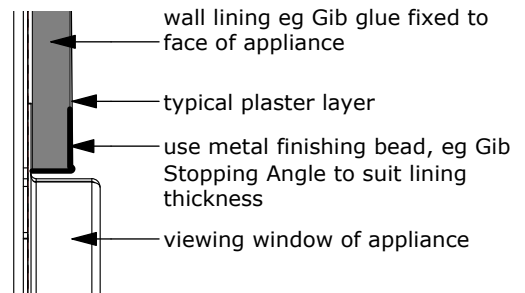
## DOUBLE SIDED INTERNAL



**1** CROSS SECTION  
 Scale: 1:20

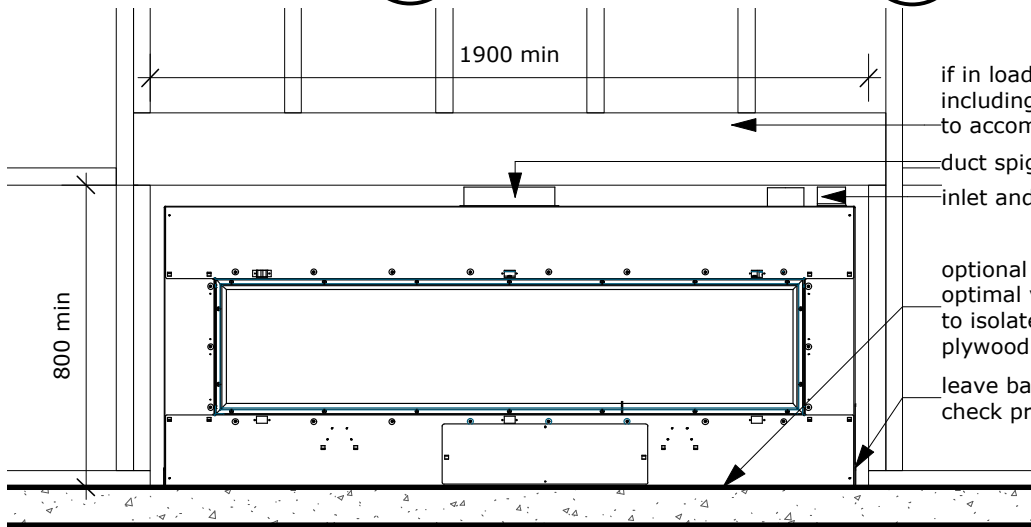


**3** ELEVATION INSTALLED  
 Scale: 1:50



**5** EDGE DETAIL  
 Scale: Half Actual Size

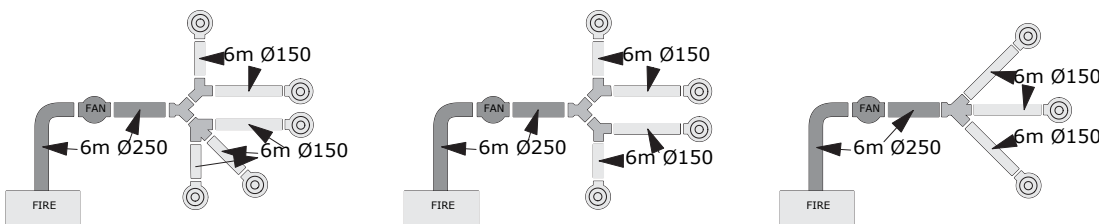
NOTE: kit to convert standard DX1500 to double sided should be ordered with the fire



**2** ELEVATION  
 Scale: 1:20

**NOTES:**

1. Designer must consider ducting as part of fire detailing.
2. Fire will not operate if ducting incorrect
3. Frame up suitable support structure for inline fan from 90x45mm timber min - refer install instructions for suggested noise isolation



NOTE: ELECTRICIAN TO PROVIDE EASILY ACCESSIBLE ISOLATING POWER SWITCH TO APPLIANCE, AND NETWORK CABLE BACK TO ROUTER

**4** DUCTING SCENARIOS  
 Scale: 1:20