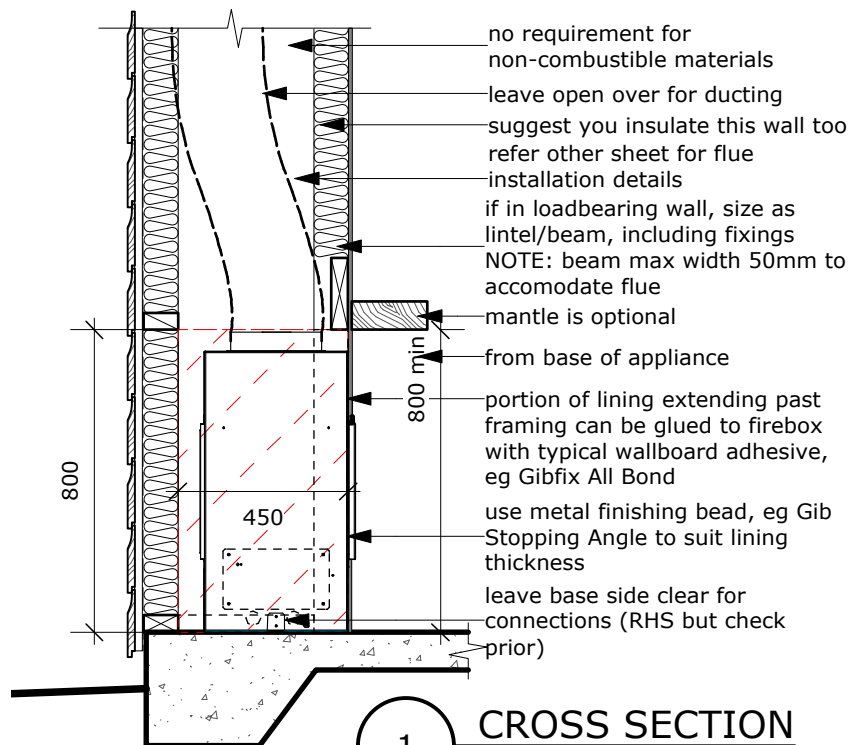
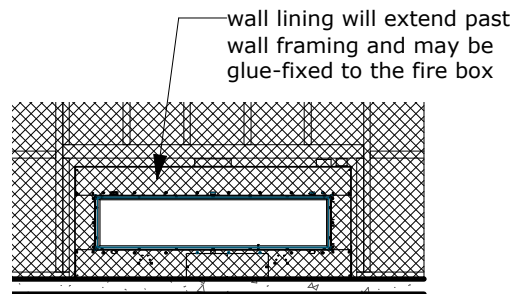


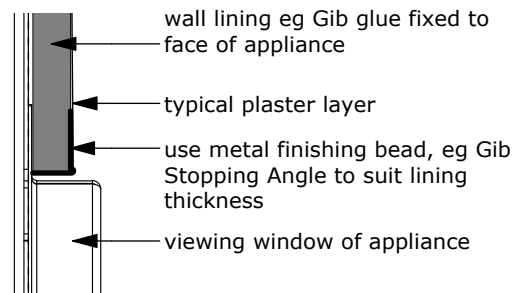
ESCEA DX1500 : NO FASCIA SINGLE SIDED



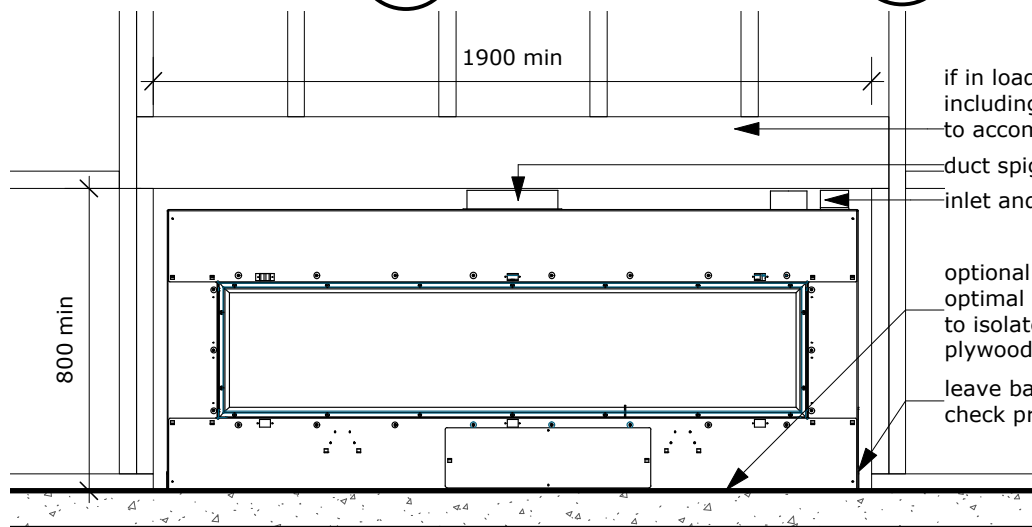
1 CROSS SECTION
Scale: 1:20



3 ELEVATION INSTALLED
Scale: 1:50



5 EDGE DETAIL
Scale: Half Actual Size

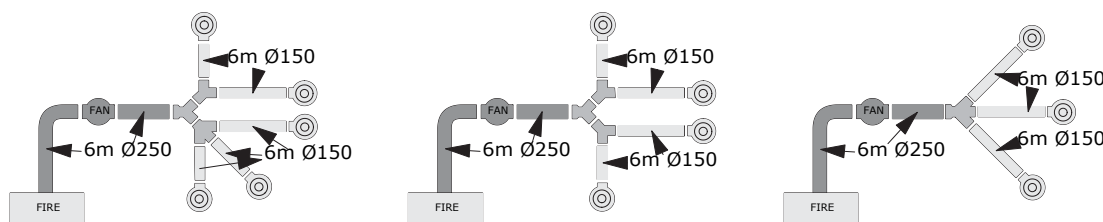


2 ELEVATION
Scale: 1:20

NOTES:

1. Designer must consider ducting as part of fire detailing.
2. Fire will not operate if ducting incorrect
3. Frame up suitable support structure for inline fan from 90x45mm timber min - refer install instructions for suggested noise isolation

NOTE: ELECTRICIAN TO PROVIDE EASILY ACCESSIBLE ISOLATING POWER SWITCH TO APPLIANCE, AND NETWORK CABLE BACK TO ROUTER



4 DUCTING SCENARIOS
Scale: 1:20