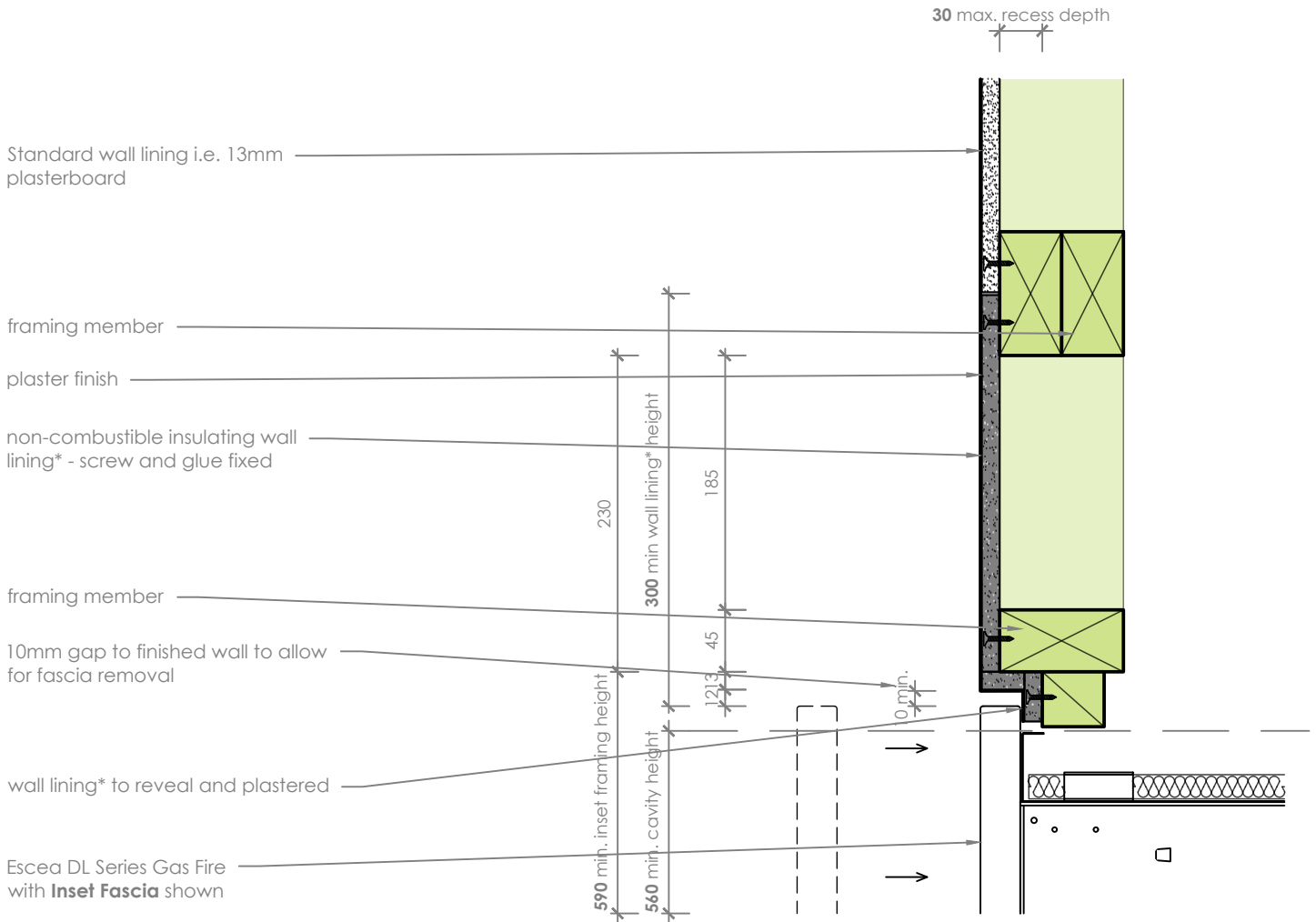


Prolonged unprotected exposure to heat may be detrimental to the appearance or long term performance of the wall lining.  
Always choose materials suitable for the specification around a fireplace.



\* Non-combustible wall linings must be used i.e. Promina, Eterpan, Hilux Board, or equivalent (having a thermal conductivity, less than 0.16 W/mK), for the recessed reveals and the first 300mm above the fascia. This must extend the full width of the fireplace.

## Head Detail

scale 1:5

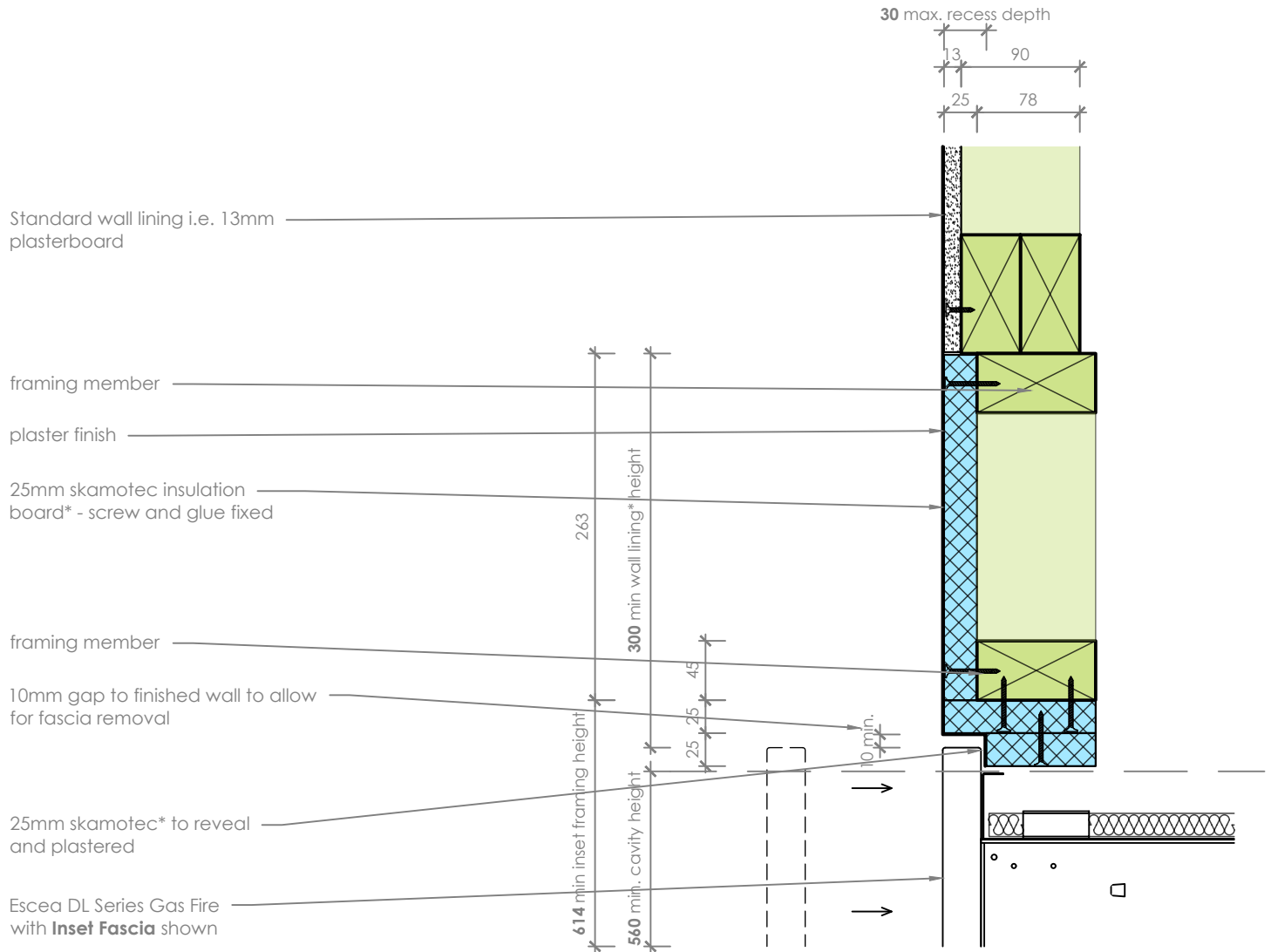
### Notes:

- DO NOT SCALE OFF THESE DRAWINGS. All dimensions are in mm.
- This detail is to assist in the installation of a **flush finish** to the DL850 or DL1100 Gas Fireplace, using the **Inset Fascia** only.
- In this scenario a non-combustible, insulating board must be used to the recessed surfaces and the first 300mm above the cavity opening. We recommend Skamotec 225 25mm insulating Board.
- This detail is applicable to the side of the fascia also.
- Powdercoated fascia's can be easily damaged - handle with care.
- This technical sheet must be read in conjunction with the Escea DL Series Installation Manual, the latest version can be found on our website at [www.escea.com](http://www.escea.com).

GENERAL CONSTRUCTION AND FINISHES SHOWN INDICATIVE ONLY

Contact the ESCEA Architectural Advisory Team for assistance with the specification of this fire - [aa@escea.com](mailto:aa@escea.com)

**Prolonged unprotected exposure to heat may be detrimental to the appearance or long term performance of the wall lining.  
Always choose materials suitable for the specification around a fireplace.**



\* Non-combustible wall linings must be used i.e. Promina, Eterpan, Hilux Board, or equivalent (having a thermal conductivity, less than 0.16 W/mK), for the recessed reveals and the first 300mm above the fascia. This must extend the full width of the fireplace.  
Escea can supply 2x (1200x500x25mm) Skamotec sheets as a kit (Part No. 904276)

## Head Detail

scale 1:5

### Notes:

- DO NOT SCALE OFF THESE DRAWINGS. All dimensions are in mm.
- This detail is to assist in the installation of a **flush finish** to the DL850 or DL1100 Gas Fireplace, using the **Inset Fascia** only.
- In this scenario a non-combustible, insulating board must be used to the recessed surfaces and the first 300mm above the cavity opening. We recommend Skamotec 225 25mm insulating Board.
- This detail is applicable to the side of the fascia also.
- Powdercoated fascia's can be easily damaged - handle with care.
- This technical sheet must be read in conjunction with the Escea DL Series Installation Manual, the latest version can be found on our website at [www.escea.com](http://www.escea.com).

GENERAL CONSTRUCTION AND FINISHES SHOWN INDICATIVE ONLY

Contact the **ESCEA Architectural Advisory Team** for assistance with the specification of this fire - [aa@escea.com](mailto:aa@escea.com)