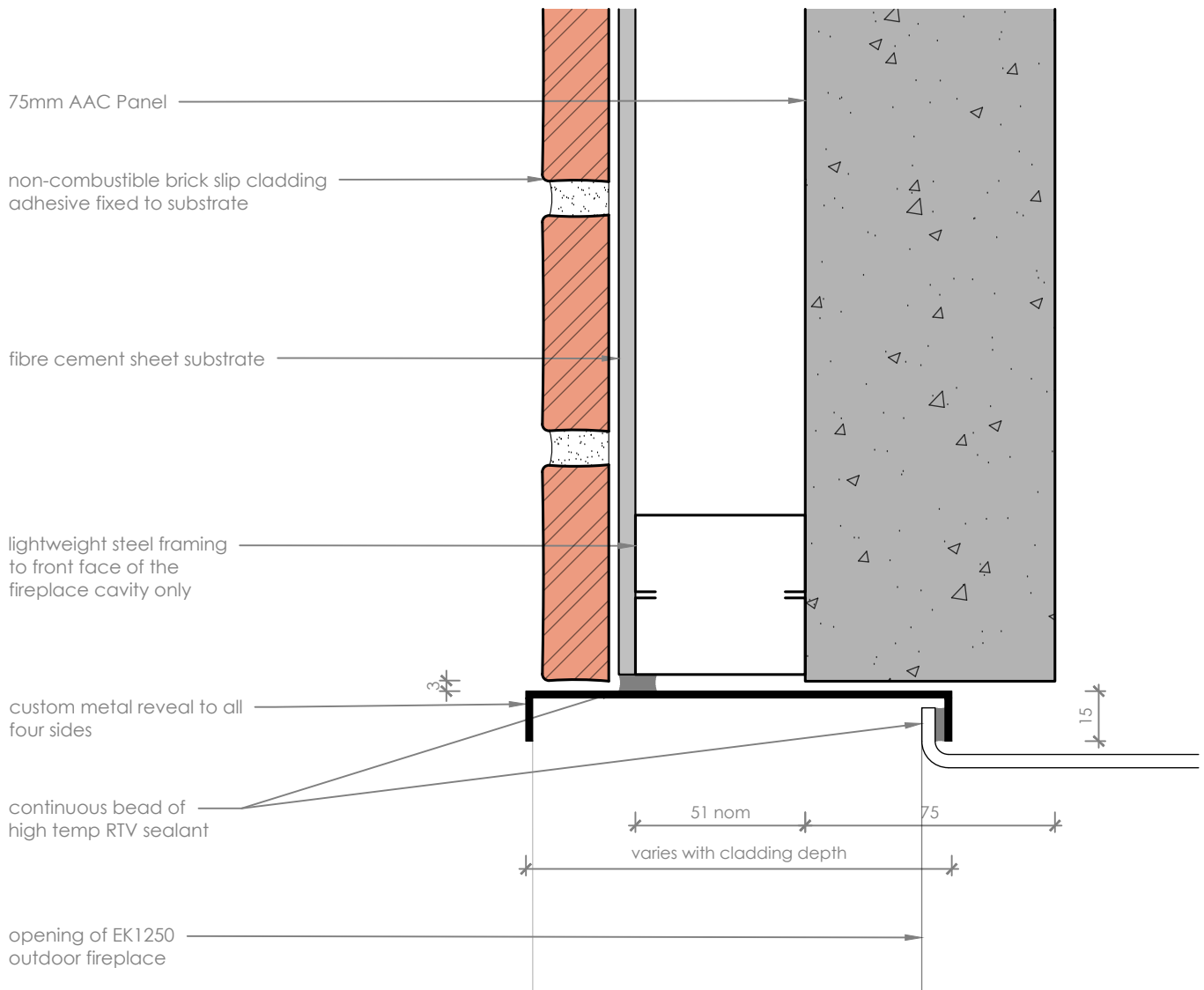


Prolonged unprotected exposure to heat may be detrimental to the appearance or long term performance of heat sensitive linings and finishes. Ensure that any heat sensitive materials are not exposed to direct heat from the fireplace viewing area.



Head Detail

scale 1:2

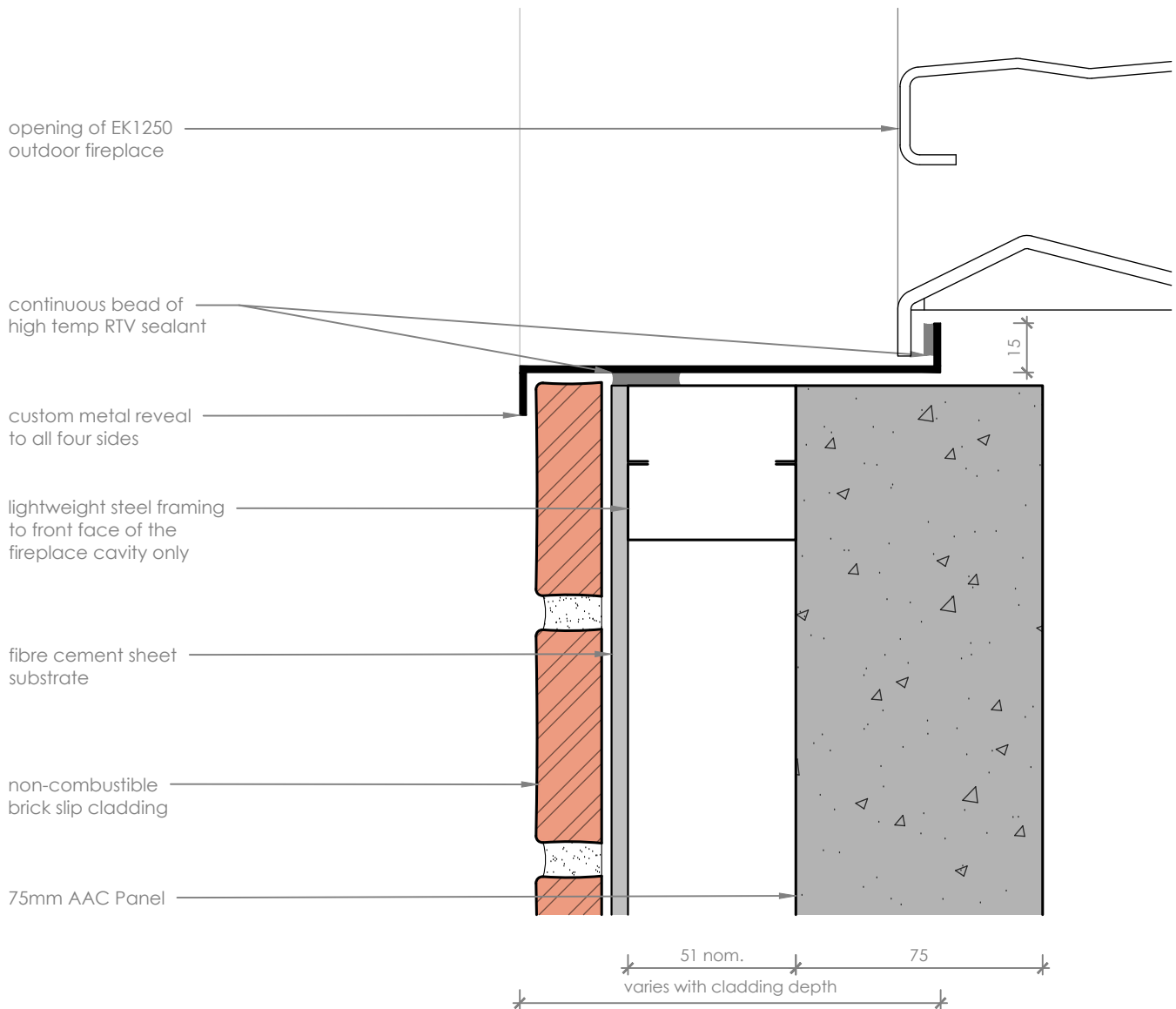
Notes:

- All dimensions are in mm. DO NOT SCALE OFF THESE DRAWINGS.
- This detail sheet is to assist in the specification of an **EK Series Outdoor Fireplace Kitchen** into a standalone structure.
- Protect the appliance from damage during installation.
- Parts of this fire and the cavity into which it is installed, may get hot during operation. Ensure any materials used are heat resistant and non-combustible to resist deformation or degradation. Escea takes no responsibility for material selection.
- Follow the manufacturer's instructions for specifying and installing wall claddings, finishes and AAC Panels.
- Lightweight steel framing is intended to be non-loadbearing.
- The Specifier and/or Installer are responsible for compliance with all relevant Building Codes.
- This technical sheet must be read in conjunction with the EK Series Installation Manual, the latest version can be found on our website at www.escea.com

GENERAL CONSTRUCTION AND FINISHES SHOWN INDICATIVE ONLY

Contact the ESCEA Architectural Advisory Team for assistance with the specification of this fire - aa@escea.com

Prolonged unprotected exposure to heat may be detrimental to the appearance or long term performance of heat sensitive linings and finishes. Ensure that any heat sensitive materials are not exposed to direct heat from the fireplace viewing area.



Sill Detail

scale 1:2

Notes:

- All dimensions are in mm. DO NOT SCALE OFF THESE DRAWINGS.
- This detail sheet is to assist in the specification of a **EK Series Outdoor Fireplace Kitchen** into a standalone structure.
- Protect the appliance from damage during installation.
- Parts of this fire and the cavity into which it is installed, may get hot during operation. Ensure any materials used are heat resistant and non-combustible to resist deformation or degradation. Escea takes no responsibility for material selection.
- Follow the manufacturer's instructions for specifying and installing wall claddings, finishes and AAC Panels.
- Lightweight steel framing is intended to be non-loadbearing.
- The Specifier and/or Installer are responsible for compliance with all relevant Building Codes.
- This technical sheet must be read in conjunction with the EK Series Installation Manual, the latest version can be found on our website at www.escea.com

GENERAL CONSTRUCTION AND FINISHES SHOWN INDICATIVE ONLY

Contact the ESCEA Architectural Advisory Team for assistance with the specification of this fire - aa@escea.com