

Plan

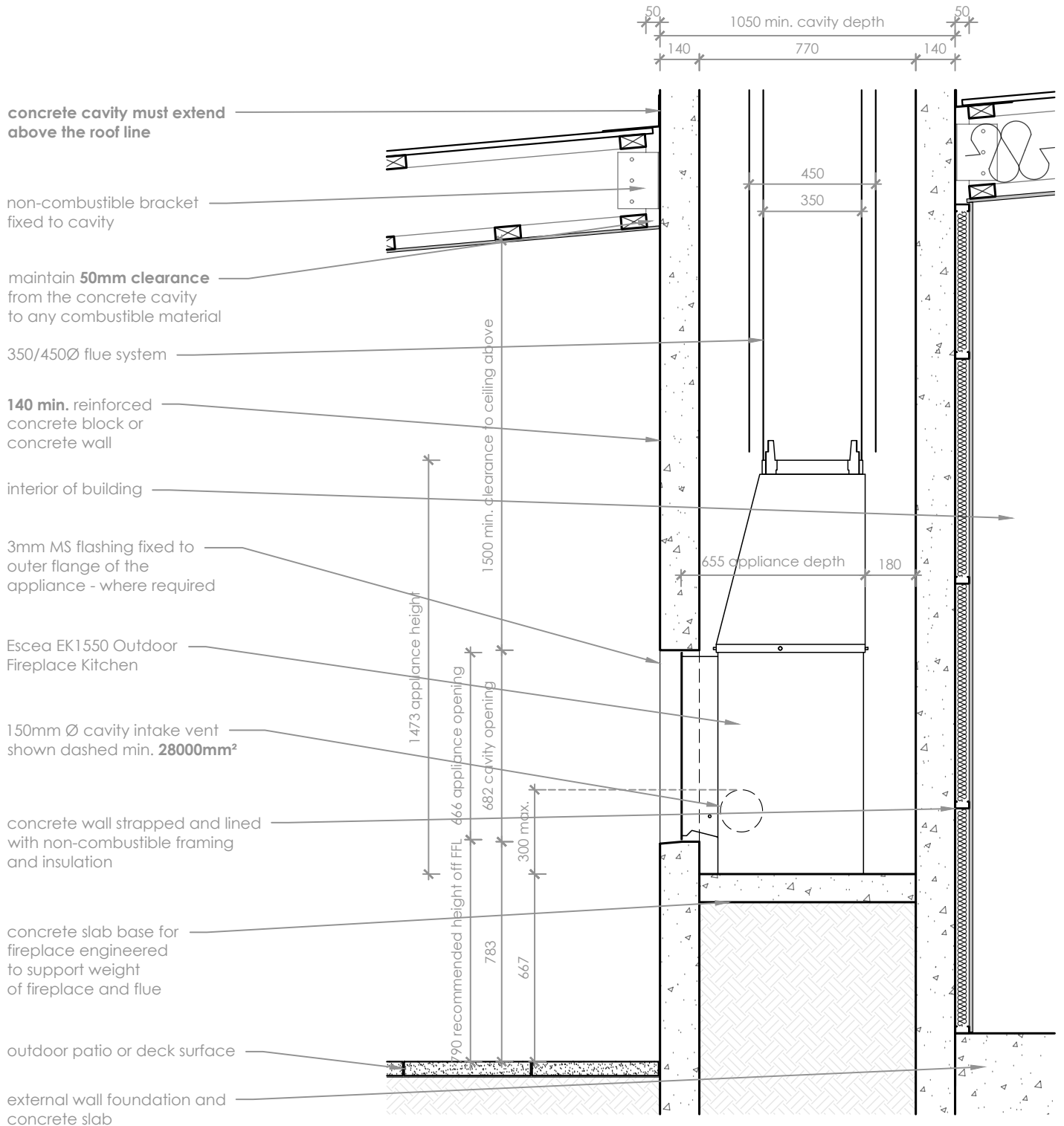
scale 1:20

Notes:

- All dimensions are in mm. DO NOT SCALE OFF THESE DRAWINGS.
- This detail is to assist in the installation of a **EK1550 Outdoor Fireplace Kitchen** into the exterior of a building, within a concrete cavity.
- Some parts of this fire and the cavity into which it is installed, may get hot during operation. Ensure any materials used are heat resistant and non-combustible to resist deformation or degradation. Escea takes no responsibility for material selection.
- Restrain the fire from movement by fixing to the supporting base through the provided holes in the base of the fireplace.
- For flue detailing above the roof line, refer to the requisite Concrete Flue Technical Detail, which can be found at www.escea.com
- This technical sheet must be read in conjunction with the EK Series Installation Manual, the latest version can be found on our website at www.escea.com

GENERAL CONSTRUCTION AND FINISHES SHOWN INDICATIVE ONLY

Contact the **ESCEA Architectural Advisory Team** for assistance with the specification of this fire - aa@escea.com



Section - Side

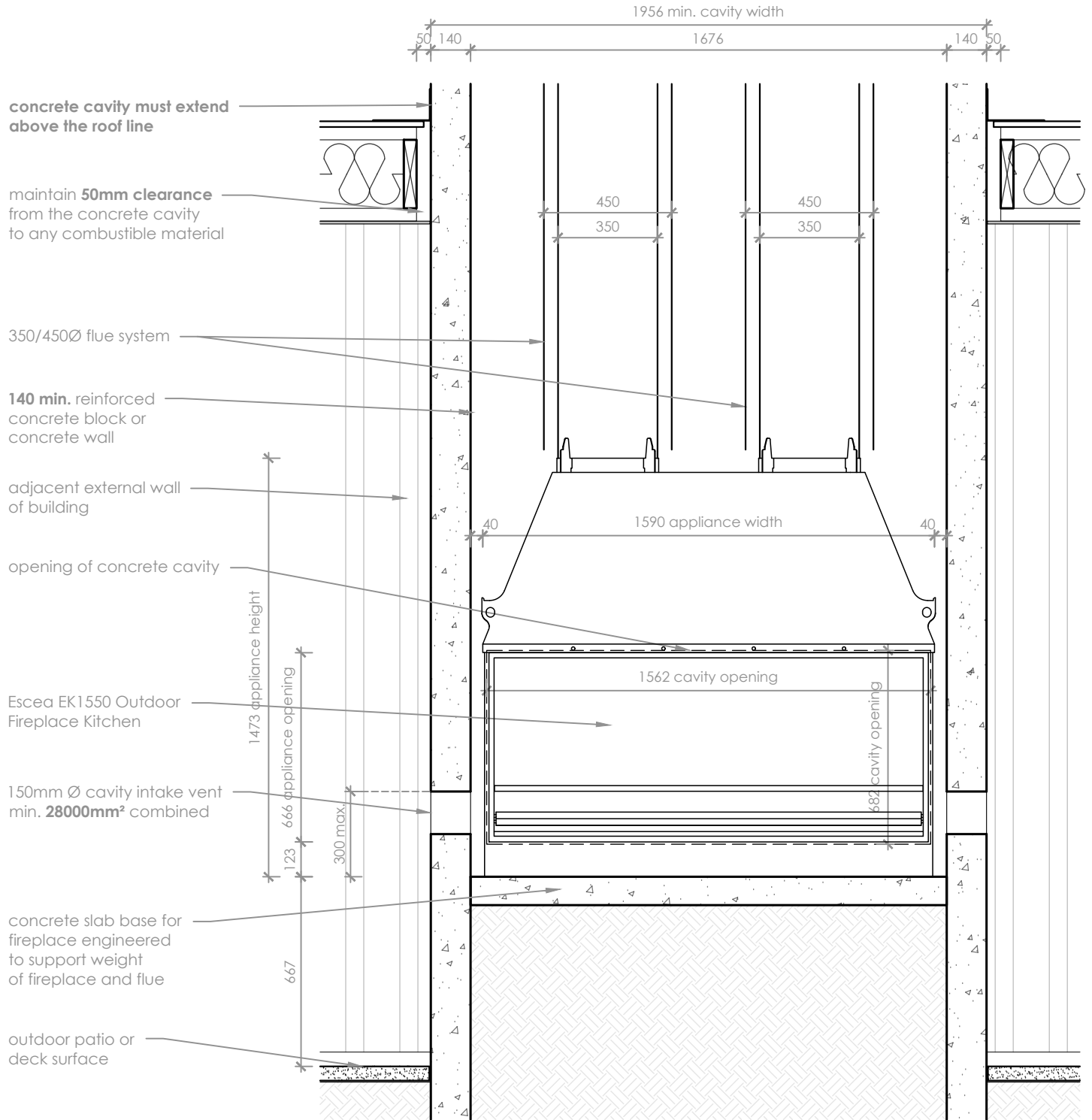
scale 1:20

Notes:

- All dimensions are in mm. DO NOT SCALE OFF THESE DRAWINGS.
- This detail is to assist in the installation of a **EK1550 Outdoor Fireplace Kitchen** into the exterior of a building, within a concrete cavity.
- Some parts of this fire and the cavity into which it is installed, may get hot during operation. Ensure any materials used are heat resistant and non-combustible to resist deformation or degradation. Escea takes no responsibility for material selection.
- Restrain the fire from movement by fixing to the supporting base through the provided holes in the base of the fireplace.
- For flue detailing above the roof line, refer to the requisite Concrete Flue Technical Detail, which can be found at www.escea.com
- This technical sheet must be read in conjunction with the EK Series Installation Manual, the latest version can be found on our website at www.escea.com

GENERAL CONSTRUCTION AND FINISHES SHOWN INDICATIVE ONLY

Contact the **ESCEA Architectural Advisory Team** for assistance with the specification of this fire - aa@escea.com



Notes:

- All dimensions are in mm. DO NOT SCALE OFF THESE DRAWINGS.
- This detail is to assist in the installation of a **EK1550 Outdoor Fireplace Kitchen** into the exterior of a building, within a concrete cavity.
- Some parts of this fire and the cavity into which it is installed, may get hot during operation. Ensure any materials used are heat resistant and non-combustible to resist deformation or degradation. Escea takes no responsibility for material selection.
- Restrain the fire from movement by fixing to the supporting base through the provided holes in the base of the fireplace.
- For flue detailing above the roof line, refer to the requisite Concrete Flue Technical Detail, which can be found at www.escea.com
- This technical sheet must be read in conjunction with the EK Series Installation Manual, the latest version can be found on our website at www.escea.com

GENERAL CONSTRUCTION AND FINISHES SHOWN INDICATIVE ONLY

Contact the **ESCEA Architectural Advisory Team** for assistance with the specification of this fire - aa@escea.com