

L-Trim Detail

scale 1:1

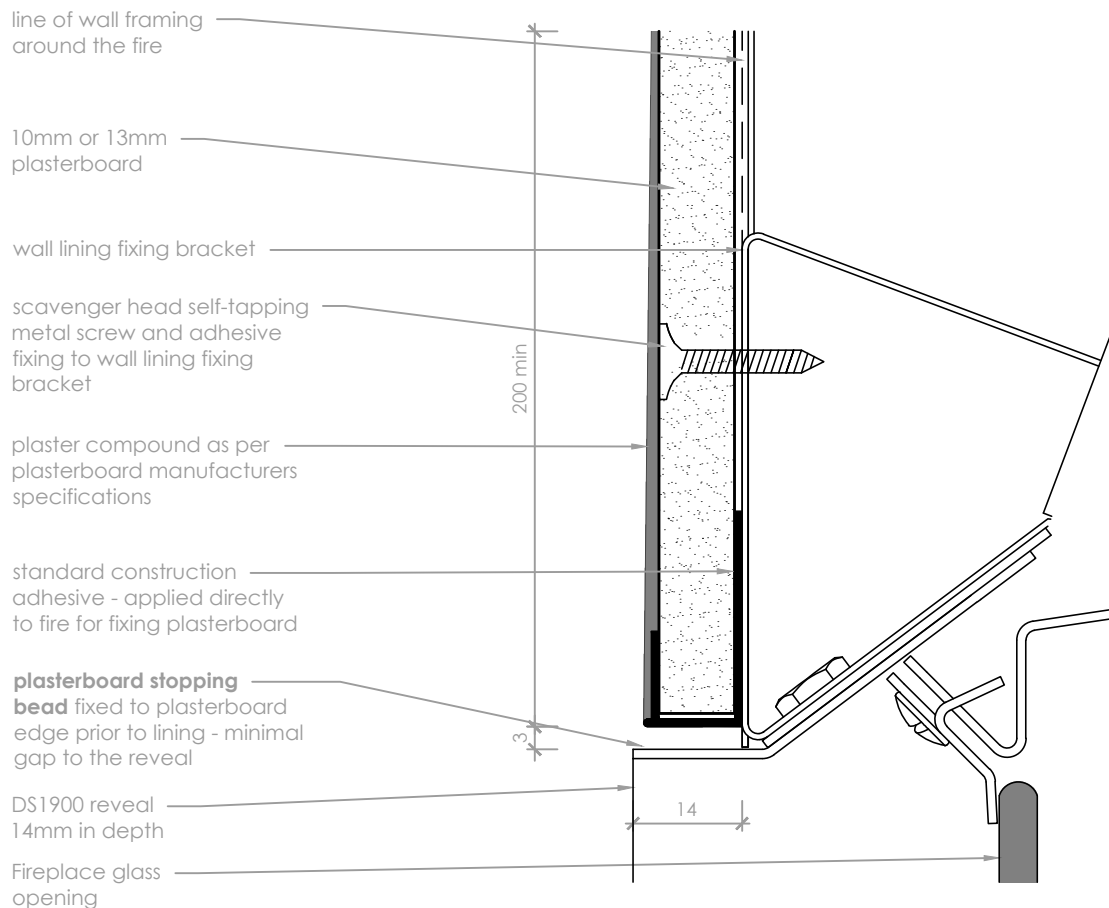
This detail is applicable for:
DS1900

Notes:

- DO NOT SCALE OFF THESE DRAWINGS
- All dimensions are in mm.
- This detail is to assist in the installation of a **frameless plasterboard finish** to the DS1900 Gas Fire.
- Escea recommends when using these finishing methods that **10mm plasterboard** is used.
- Use care when sanding plaster to avoid scratching black fireplace reveals - use a damp sponge to remove excess.
- Black fireplace reveals must be able to be removed - ensure any adhesive or compound is kept clear.
- **Do not excessively push back wall board when fixing it to the fire chassis** - use large daubs of adhesive to the appliance chassis, apply wall lining and flush finish with edge of the fire reveal.
- This technical sheet must be read in conjunction with the Escea DS Series Installation Manual, the latest version can be found on our website at www.escea.com.

GENERAL CONSTRUCTION AND FINISHES SHOWN INDICATIVE ONLY

Contact the **ESCEA Architectural Advisory Team** for assistance with the specification of this fire - aa@escea.com



Stopping Bead

scale 1:1

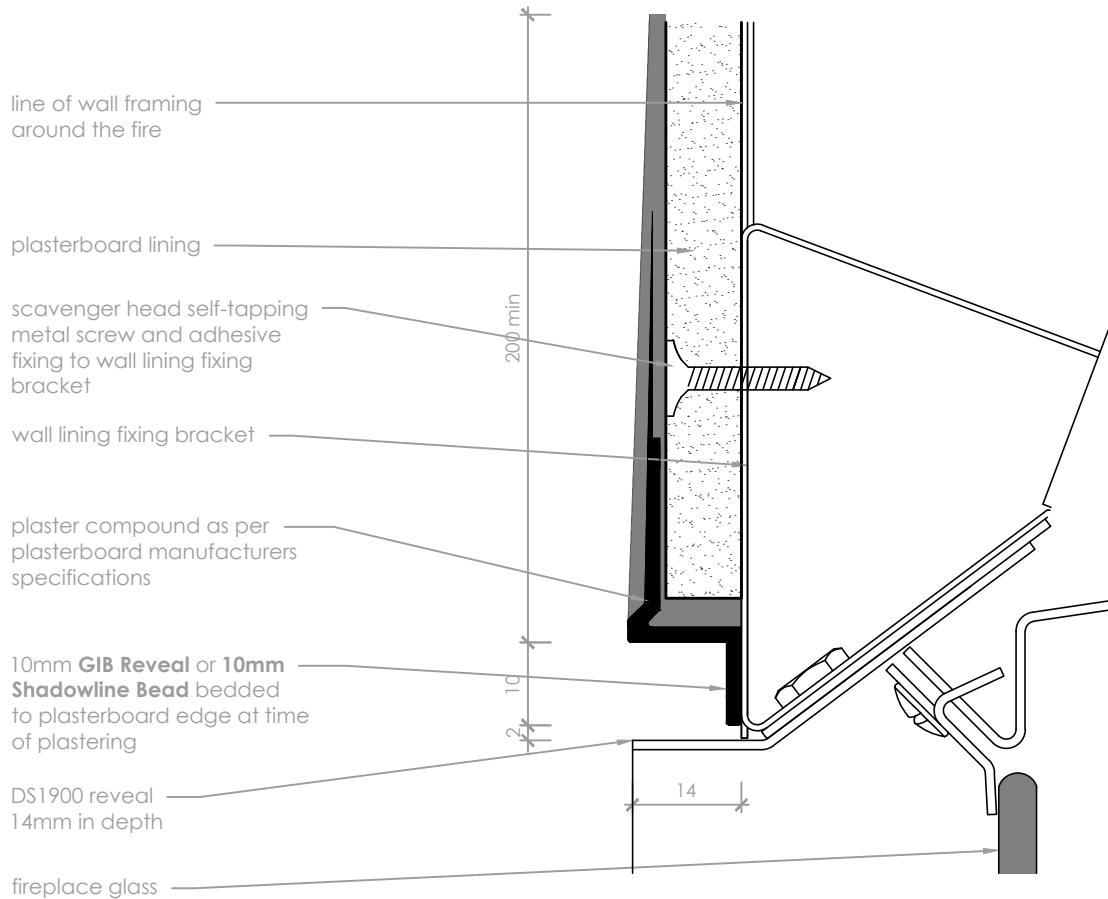
This detail is applicable for:
DS1900

Notes:

- DO NOT SCALE OFF THESE DRAWINGS
- All dimensions are in mm.
- This detail is to assist in the installation of a **frameless plasterboard finish** to the DS1900 Gas Fire.
- Escea recommends when using these finishing methods that **10mm plasterboard** is used.
- Use care when sanding plaster to avoid scratching black fireplace reveals - use a damp sponge to remove excess.
- Black fireplace reveals must be able to be removed - ensure any adhesive or compound is kept clear.
- **Do not excessively push back wall board when fixing it to the fire chassis** - use large daubs of adhesive to the appliance chassis, apply wall board and flush finish with edge of the fire reveal.
- This technical sheet must be read in conjunction with the Escea DS Series Installation Manual, the latest version can be found on our website at www.escea.com.

GENERAL CONSTRUCTION AND FINISHES SHOWN INDICATIVE ONLY

Contact the **ESCEA Architectural Advisory Team** for assistance with the specification of this fire - aa@escea.com



Negative Detail

scale 1:1

This detail is applicable for:
DS1900

Notes:

- DO NOT SCALE OFF THESE DRAWINGS
- All dimensions are in mm.
- This detail is to assist in the installation of a **frameless plasterboard finish** to the DS1900 Gas Fire.
- Escea recommends when using these finishing methods that **10mm plasterboard** is used.
- Use care when sanding plaster to avoid scratching black fireplace reveals - use a damp sponge to remove excess.
- Black fireplace reveals must be able to be removed - ensure any beading, adhesive or compound is kept clear.
- **Do not excessively push back wall board when fixing it to the fire chassis** - use large daubs of adhesive to the chassis, apply wall board and flush finish with edge of the fire reveal.
- This technical sheet must be read in conjunction with the Escea DS Series Installation Manual, the latest version can be found on our website at www.escea.com.

GENERAL CONSTRUCTION AND FINISHES SHOWN INDICATIVE ONLY

Contact the **ESCEA Architectural Advisory Team** for assistance with the specification of this fire - aa@escea.com