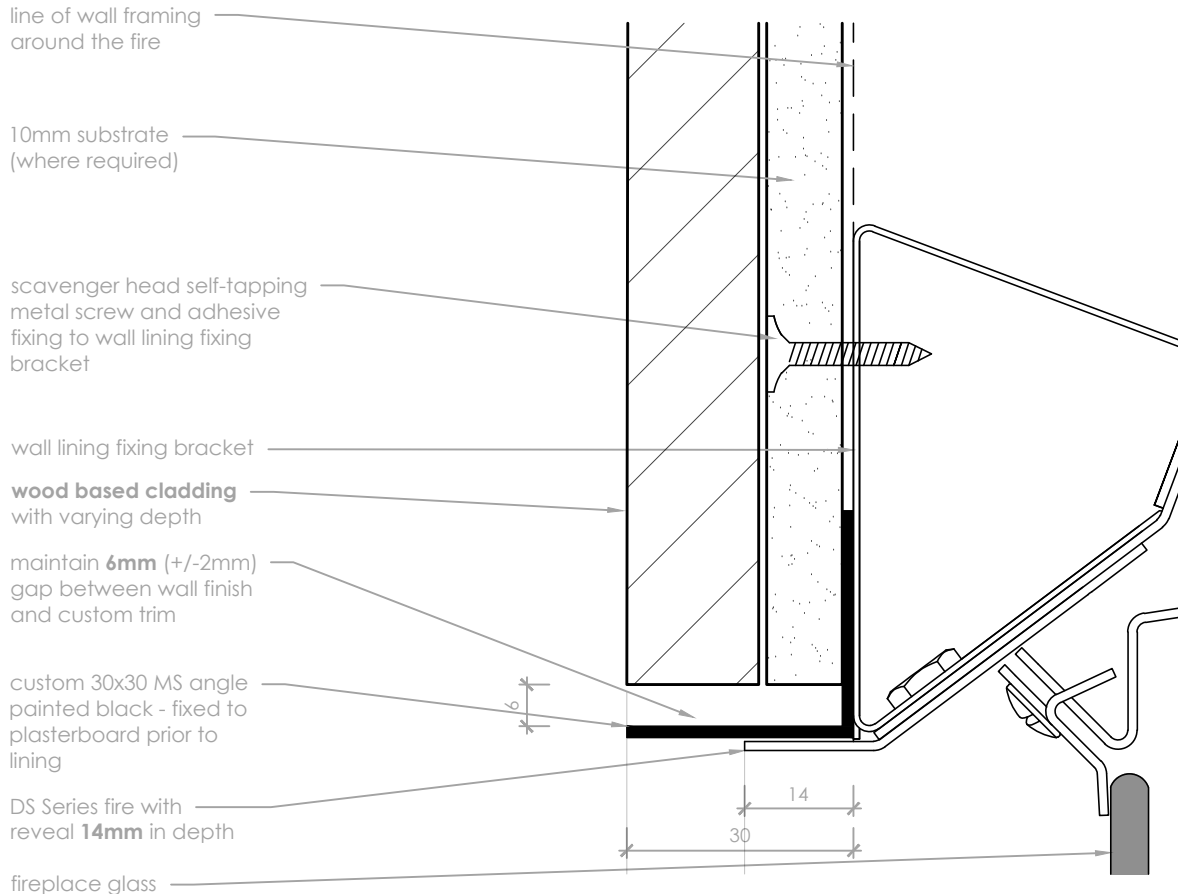


Prolonged unprotected exposure to heat may be detrimental to the appearance or long term performance of the cladding. The DS Series Extended Trim Kit is to protect the exposed edges from the direct heat from the fire.



Custom L-Angle

scale 1:1

Notes:

- All dimensions are in mm. DO NOT SCALE OFF THESE DRAWINGS
- This detail is to assist in the installation of a **frameless finish** to a DS1150, DS1400 or DS1650 Gas Fireplace. They offer pathways for protection of heat sensitive linings and finishes.
- Escea recommends when using these finishing methods that a **10mm substrate** is used.
- The Black MS Angle is to protect the hardwood cladding (e.g. Hardwood/Cedar/Fluted Panels) from direct heat from the fire. Prolonged unprotected exposure to heat will affect the cladding.
- Black fireplace reveals must be able to be removed - ensure any adhesive or compound is kept clear.
- This technical sheet must be read in conjunction with the Escea DS Series Installation Manual, the latest version can be found on our website at www.escea.com.

GENERAL CONSTRUCTION AND FINISHES SHOWN INDICATIVE ONLY

Contact the ESCEA Architectural Advisory Team for assistance with the specification of this fire - aa@escea.com