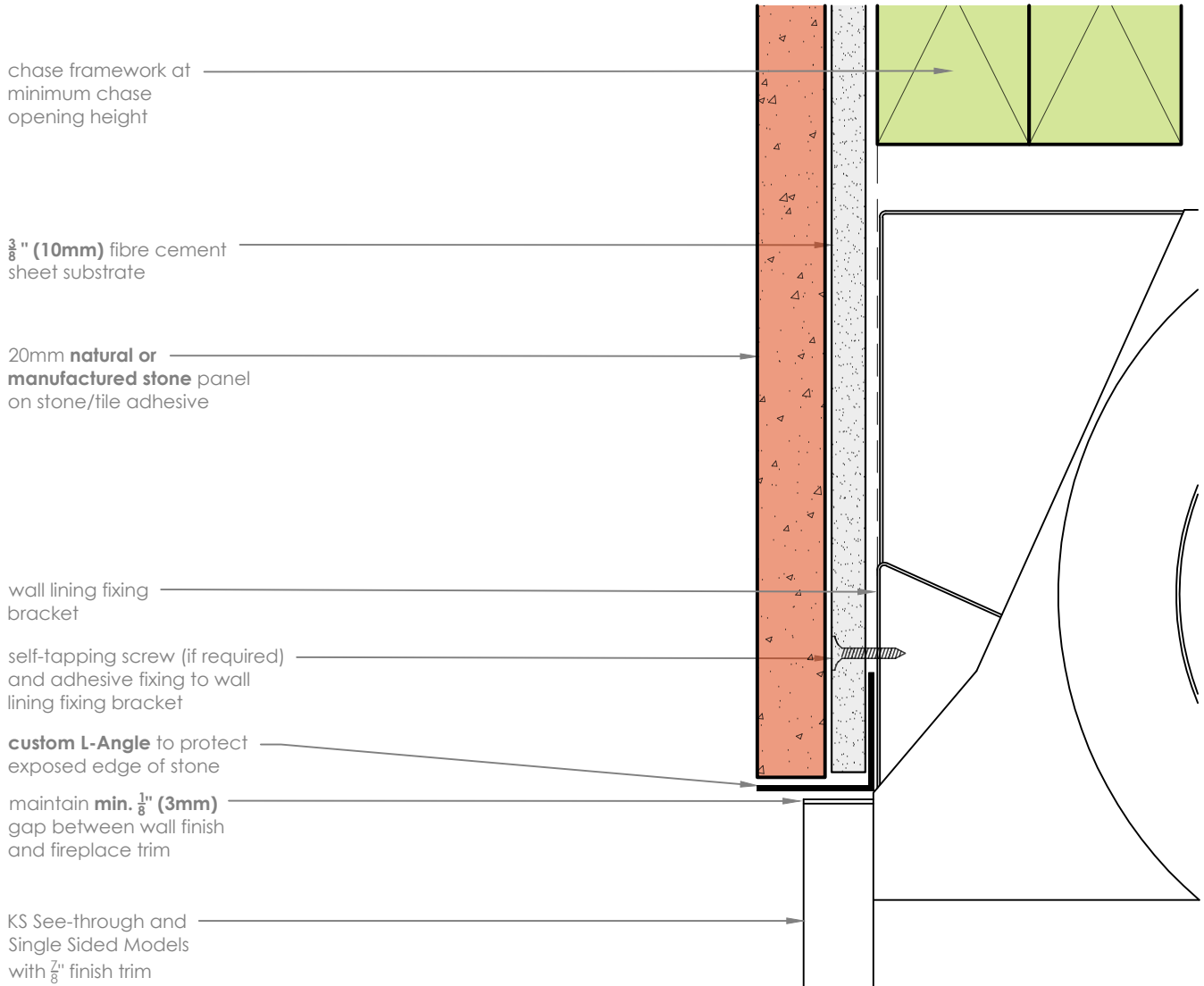


Prolonged unprotected exposure to heat may be detrimental to the appearance or long term performance of a wall finish. Combustible and heat sensitive wall panels or finishes must not protrude past the trim, to the glass viewing area. Some scenarios will require a custom solution, to provide further protection.



## Stone Finish

scale 1:2

### Applicable for:

KS55 Mesh Barrier Single Sided  
 KS55 Mesh Barrier See-Through  
 KS55 Glass Barrier Single Sided  
 KS55 Glass Barrier See-Through  
 KS75 Glass Barrier Single Sided  
 KS75 Glass Barrier See-Through

### Notes:

- DO NOT SCALE OFF THESE DRAWINGS
- This detail is to assist in the installation of a **frameless finish** to a KS Series Gas Fireplace.
- This detail is suitable for all four sides of the fireplace glass viewing area.
- Any custom trim or L-angle must be on all four sides to the glass opening of the fire.
- Follow the manufacturer's instructions for specifying and installing wall panels or finishes. Escea takes no responsibility for material selection.
- The Specifier and/or Installer are responsible for compliance with all relevant Building Codes.
- This technical sheet must be read in conjunction with the requisite Escea KS Series Installation Manual, the latest version can be found on our website at [www.escea.com](http://www.escea.com).

GENERAL CONSTRUCTION AND FINISHES SHOWN INDICATIVE ONLY

Contact the ESCEA Architectural Advisory Team for assistance with the specification of this fire - [aa@escea.com](mailto:aa@escea.com)