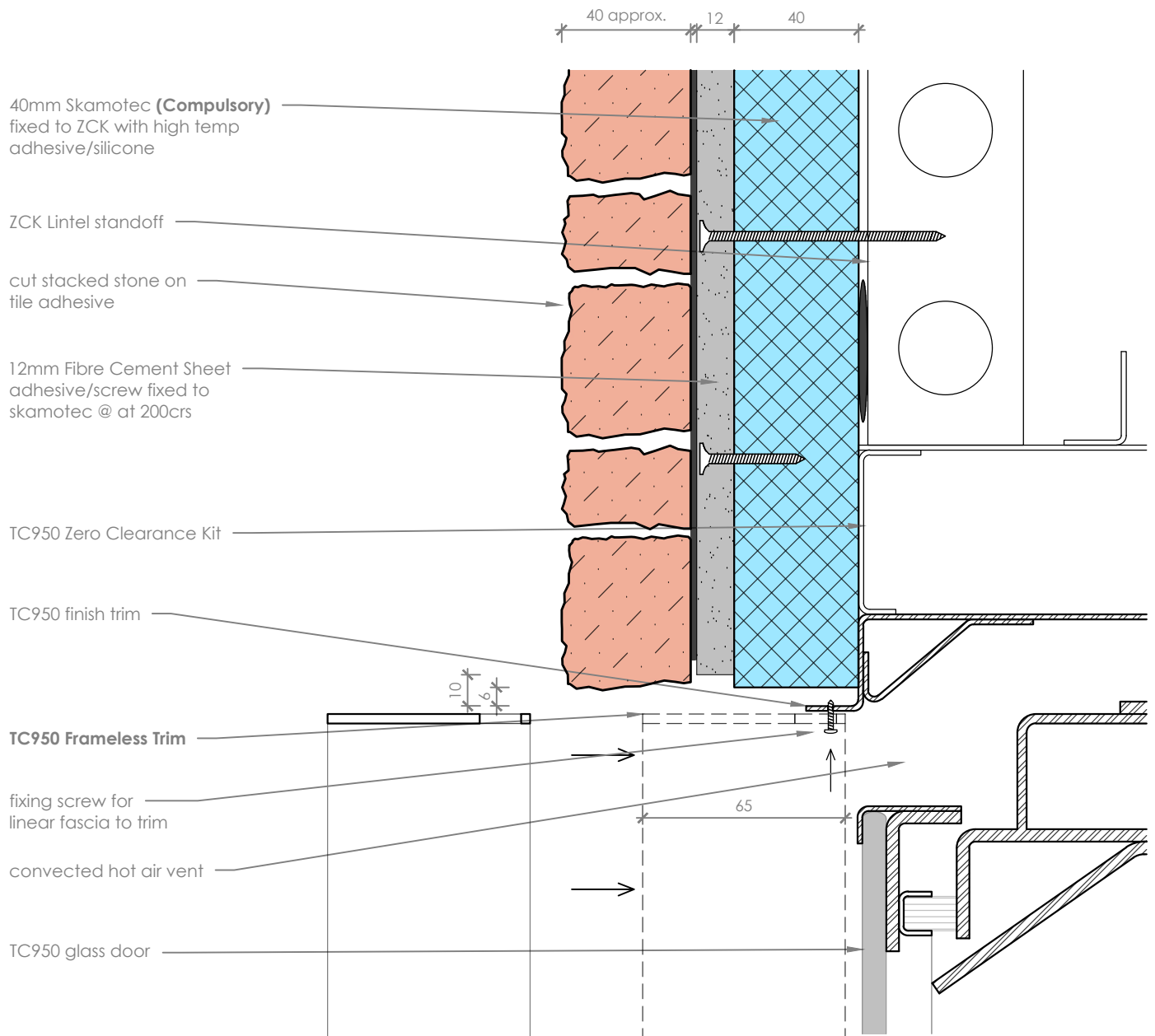


For the first 100mm above the TC950 Frameless Trim, the surface temperature may reach 140 Deg C. Ensure tile adhesive suitability.



TC950 Frameless Trim is designed for deeper non-combustible finishes. The trim is designed to cover the junction of wall finish and substrate.

Cut Stone Detail

scale 1:2

- Notes:**
- All dimensions are in mm. DO NOT SCALE OFF THESE DRAWINGS.
 - This detail sheet is to assist in the installation of an **Escea TC950 Indoor Wood Fire** into a timber framed cavity, with a cut-faced stacked stone finish.
 - In all scenarios a linear fascia or frameless trim must be used.
 - The finishing material to the front of the cavity must be a non-combustible and heat resistant material, to resist deformation or degradation. Escea takes no responsibility for material selection.
 - The Specifier and/or Installer are responsible for compliance with all relevant Building Codes.
 - This technical sheet must be read in conjunction with the Escea TC950 Installation Manual, the latest version can be found on our website at www.escea.com

GENERAL CONSTRUCTION AND FINISHES SHOWN INDICATIVE ONLY

Contact the **ESCEA Architectural Advisory Team** for assistance with the specification of this fire - aa@escea.com