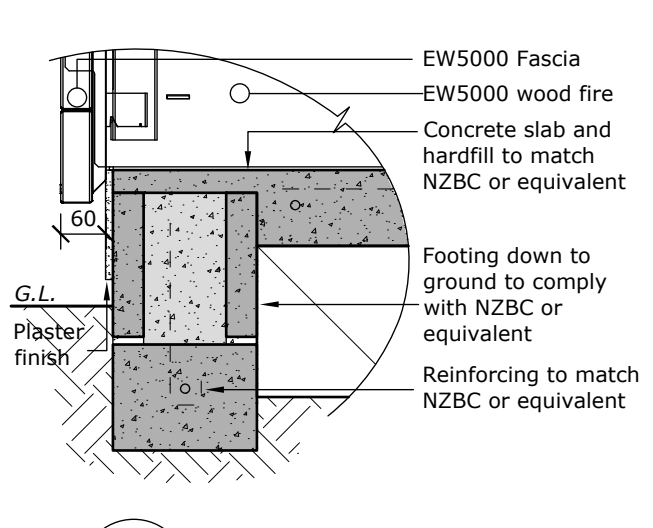
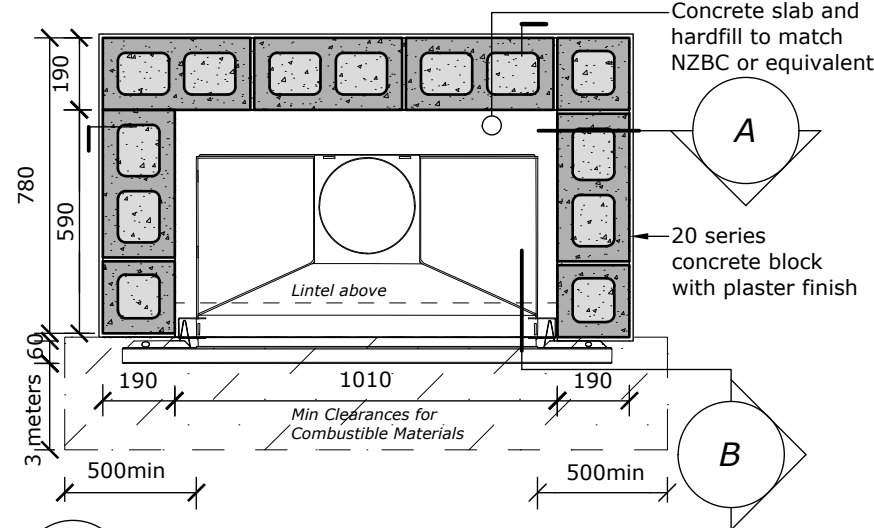


**A LONG SECTION A**  
Scale: 1:20

**B SECTION B**  
Scale: 1:20



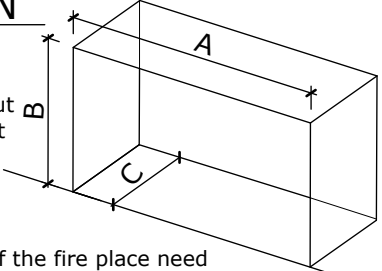
**1 ENCLOSURE PLAN**  
Scale: 1:20

**2 SILL DETAIL**  
Scale: 1:10

NOTES: 2.4m flue height recommended but shorter flues are possible which may result in more smoke spillage from front of fire.

The fire doesn't slide into cavity - the enclosure gets built around the fire.

CLEARANCES: Any combustibles in front of the fire place need to be no less than 3m from the opening of the fire and 500m to each side. It is also recommended not build above the fire, because of high heat output.



MINIMUM CAVITY DIMENSIONS (mm)

EW5000 with Fascia			EW5000 without Fascia		
A	B	C	A	B	C
1000	760	490	900	510	490

Where possible it is recommended that the cavity is made slightly larger than the above dimensions to give the installer the maximum amount of space to work in.

**escea.**  
17 Carnforth Street  
Dunedin, 9018  
New Zealand

DRAWING TITLE: <b>EW5000: WITH FASCIA INTO CONCRETE BLOCK ENCLOSURE</b>			
SCALE AT A4: AS SHOWN	DATE: 22/01/2016	DRAWN BY: BC	CHECKED: RM
DRAWING NO: EDA0003	ECN NO: ECN2151	REVISION NO: 0002	

NOTE:ESCEA EW5000 wood fire is designed for outdoor use only, and under **no circumstances** should be installed into a timber cavity.  
*EW5000 weight: 123Kg Approx.*  
GENERAL CONSTRUCTION AND FINISHES SHOWN INDICATIVE ONLY