

# escea.

## IB Series Gas Type Conversion Instructions:

### Step One:

Remove inner fascia, glass and logs (as per Service Manual). Service person may also wish to remove the firebox to increase the work space within the heater.

Remove Screws

### Step 2

### Step Two:

Take out front two burners by removing the screws from the left hand end of the burner top face. Unscrew the electrodes attached to front burner. Burners can then be lifted out.

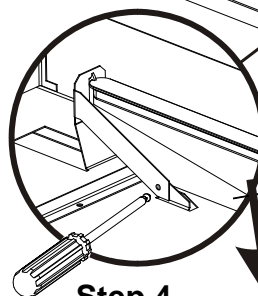
### Step Three: (IB850 & 600 only)

Unscrew rear burner clamp bracket on left side. Lift out the rear burner.

### Step 3

### Step Four:

Change the three jets (two jets in IB1100) with the jets supplied in kitset. Replace the rear burner and clamp bracket (IB850 & 600 only). Replace front two burners with the burners supplied in kitset, reattaching the spark electrodes to the front burner.



### Step 4

### Step Five:

Take the regulator spring out of the regulator by unscrewing the pressure adjustment knob completely. Swap regulator spring with the new spring that is supplied in conversion kitset. Replace adjustment screw.

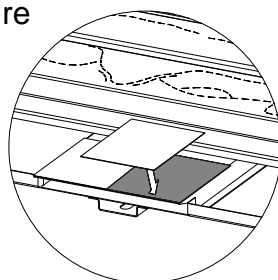
### Step 5

### Step Six:

Reset gas pressure as per instructions in the service manual.

### Step Seven:

Cover the existing gas type label with the new gas type label supplied in kitset. Ensure serial number and date of manufacture are still visible. Write your name, company (if appropriate) and date of conversion on new label with permanent marker. Replace firebox and fuel media.



### Step 7

