



ST900 Direct Vent Gas Fireplace

Conversion Kit Manual

Series 2 Natural Gas for NZ



Important:

The appliance shall be converted in accordance with;

- This installation instruction booklet
- Local gas fitting regulations
- Municipal building codes
- Electrical wiring regulations
- NZS 5261, *Gas installations*
- Any other relevant statutory regulations
- Converting this appliance for use with other gases must be done by a qualified Gas Fitter.

1.0 Contents of this Conversion Kit

This conversion kit contains the following parts.

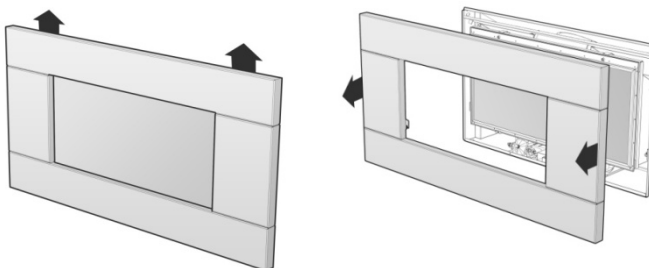
1. Main Burner Jet (1.9mm orifice for Natural Gas)
2. Pilot Burner Jet (N°. 48 Jet for Natural Gas)
3. Dataplate Label (Natural Gas information)
4. This instruction manual detailing the steps required to complete the gas conversion for this Escea ST900 Direct Vent Gas Fireplace.

2.0 Isolating the Gas Supply

Before any work is commenced, the appliance must first be shut down, allowed to cool and then isolated from the gas supply

3.0 Removing the Fascia

The ST900 fascia attaches to the fire by four hooks. To remove the fascia, simply lift it upwards 15-20mm, and pull towards you. Care should always be taken when handling the fascia.

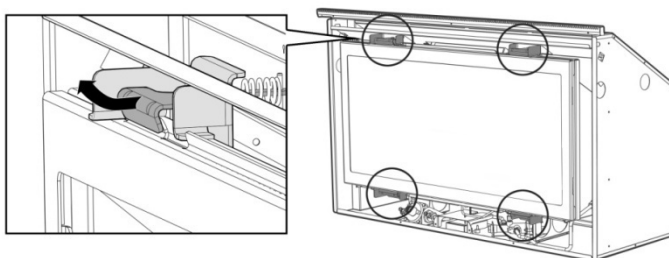


To replace the fascia, line up the four hooks with the matching receptacles on the fire and push the fascia into place and let it drop down, the fascia should now be securely in position.

4.0 Removing the Glass Assembly

Pull the four hooks shown on the following page towards you and then away from the glass to release the glass frame underneath the hook.

Lift the glass assembly towards you to clear the locating supports and place it flat upon some newspaper or a sheet of cardboard to protect your floor coverings.



Do not operate the appliance if the glass has been broken, damaged, or the glass is not properly positioned/hooked onto the appliance.

5.0 Removing the Fuel Bed Media

Remove all pieces of the fuel bed media from the firebox and place them in a container carefully to avoid damage.

6.0 Converting the Appliance to Natural Gas

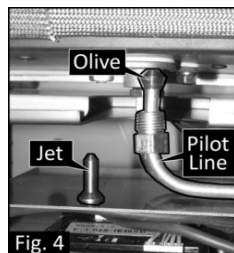
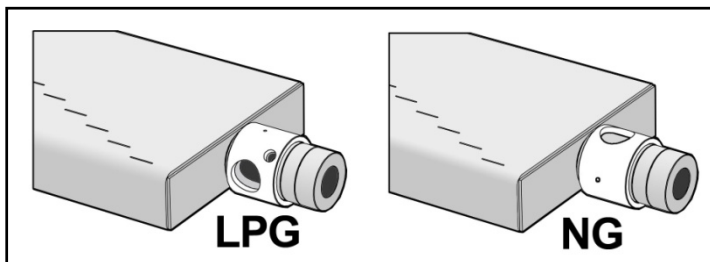
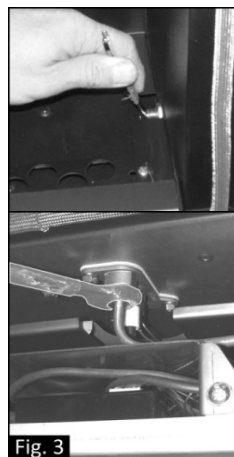
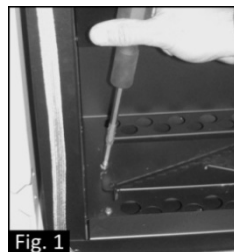
First you need to remove the burner by removing the screw holding it in place on the left hand side of the firebox (Fig. 1).

Then remove the 1.3mm burner jet (Fig. 2) and replace it with the 1.9mm jet supplied in the kit.

Now remove the gas pipe fitting under the pilot (Fig. 3) and remove the No.46 pilot Jet (Fig. 4) and replace it with the No.48 pilot jet supplied in the kit.

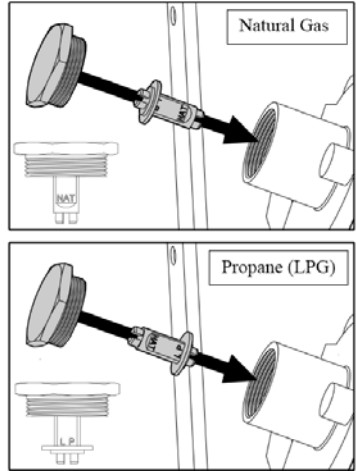
Replace the pilot line.

Adjust the Primary Aeration Collar on the burner to the Natural Gas position as shown in the diagram below, then place the burner into position and screw it in place.

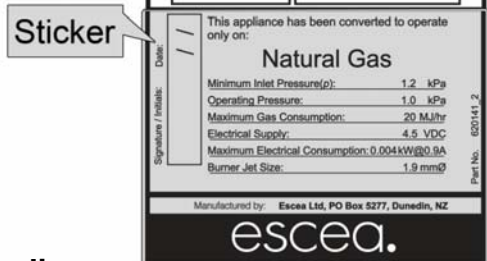


The gas regulator needs to be converted from the LPG setting to the Natural Gas setting.

The regulator is located on the left hand side of the control tray, at the base of the fire. To change the regulator between Natural Gas and LPG, unscrew the top cap off the regulator and pull the plunger from it. Re-insert the plunger on the opposite side (as shown in the diagram to the right) and screw the assembly back in the stack



Finally, put the sticker supplied in your kit in onto the dataplate of the ST900 in the position shown.

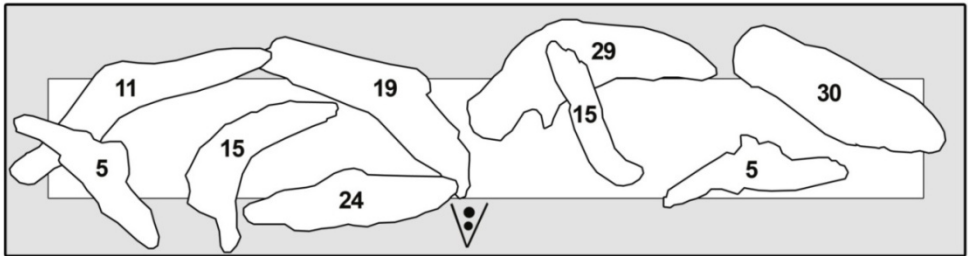


7.0 Replacing the Fuel Bed Media

The fuel bed media must now be placed back in the firebox in the correct manner to ensure that the appliance will operate in a safe and proper way.

6.1 Replacing the Driftwood and Pebbles Set

Scatter one layer of the supplied white coals evenly across the base of the firebox, ensuring there are no coals or media inside the pilot flame surround guard. Arrange the supplied logs exactly as shown in the diagram and photo on the following page. Underneath each log is a written number which will help in correctly positioning the logs.



6.2 Replacing the White or Black Coals Set

Scatter the coals evenly across the base of the firebox, ensuring there are no coals or media inside the pilot flame surround guard which may obstruct or impair the pilot assembly.

7.0 Re-fitting the Glass Assembly

The glass assembly must be re-fitted to the appliance before the gas conversion process can proceed.

Follow the instructions in '4.0 Removing the Glass Assembly' in reverse to refit the glass assembly to the fireplace.

Do not operate the appliance if the glass has been broken, damaged, or the glass is not properly positioned/hooked onto the appliance.

8.0 Re-establishing the Gas Supply

With all the above steps completed, the gas supply can now be re-established to the appliance.

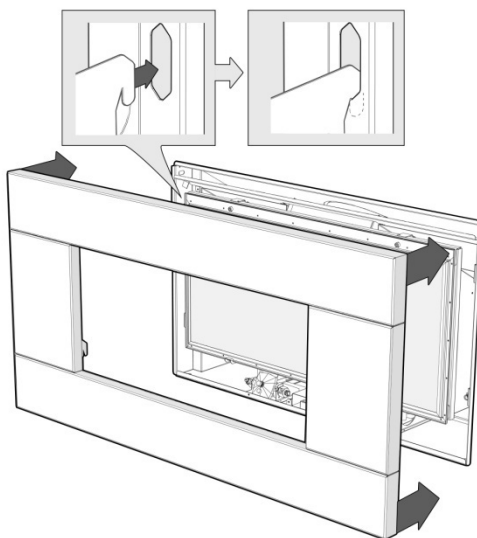
Leak test all test points and unions/joins that have been replaced or re-connected.

The appliance should be re-commissioned to ensure that it is running correctly in its re-configured state.

9.0 Re-fitting the Fascia

The fascia must be re-fitted to the appliance before the conversion process is complete.

To replace the fascia, line up the four hooks with the matching receptacles on the fire and push the fascia into place and let it drop down, the fascia should now be securely in position.



Notes:

Notes: