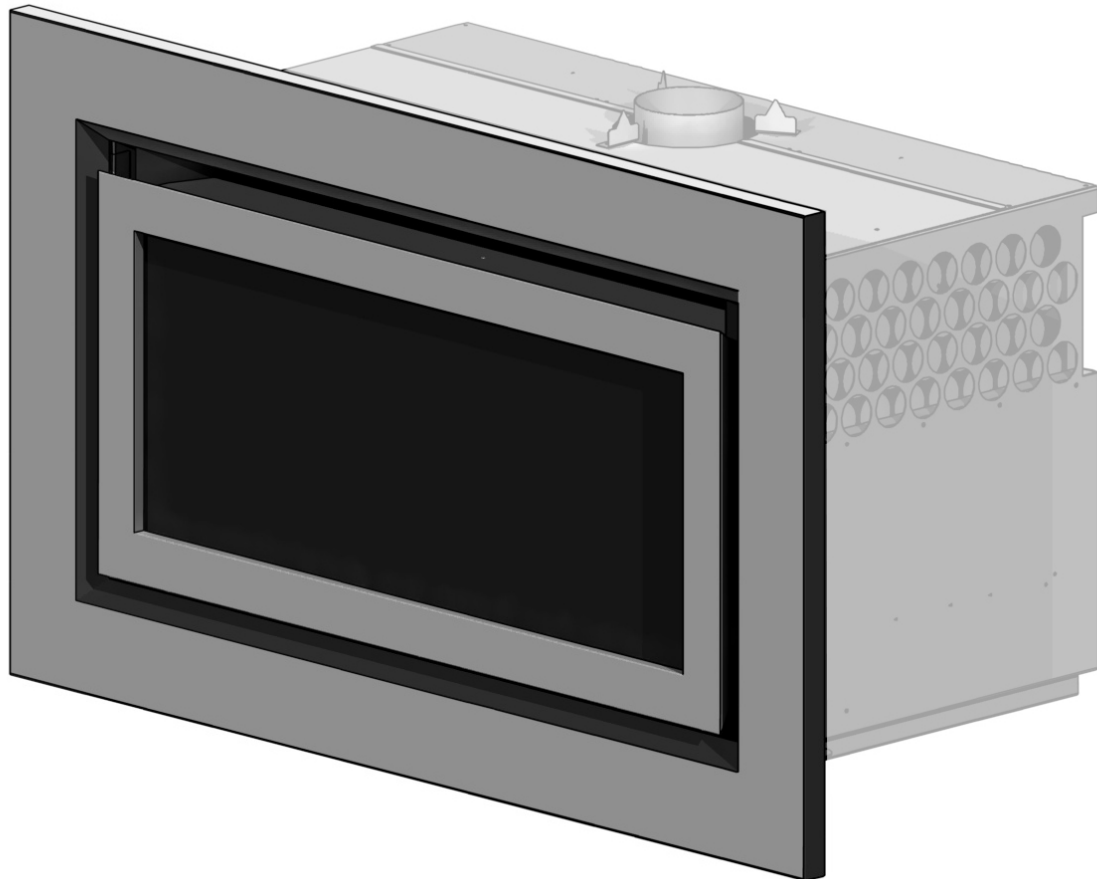




Square (Quadrato) Fascia - IB850, IB1100

Installation Manual

NEW ZEALAND EDITION



Important:

The appliance shall be installed in accordance with;

- This installation instruction booklet.
- Must be installed by a qualified person
- This Manual replaces section **24.0** of the IB850 and IB1100 Installation Manual

This appliance is not intended for use by young children or infirm persons unless they have been adequately supervised by a responsible person to ensure that they can use the appliance safely.

Young children should be supervised to ensure that they do not play with the appliance.

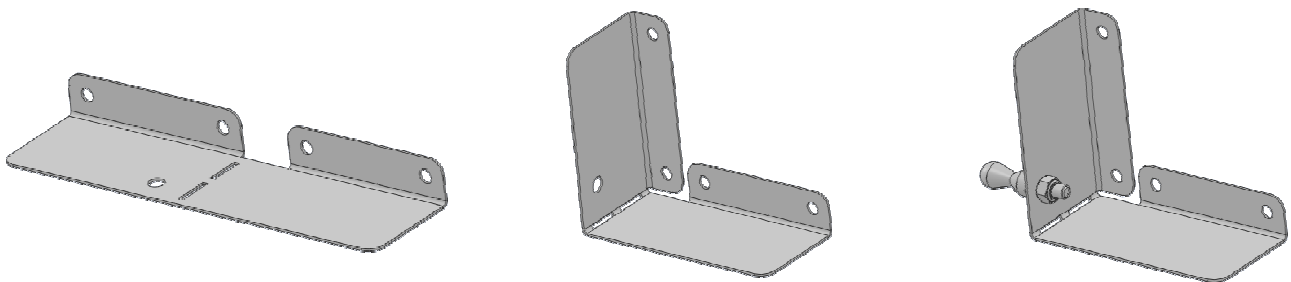
Manufactured by: Escea Ltd, PO Box 5277 Dunedin NZ, Ph: +64 3 479 0302, email: info@escea.co.nz
For contact details of your local escea distributor or dealer please visit www.escea.co.nz

Fitting the Square Fascia Panels:

To avoid scratches or knocks to the fascia panels of this gas fireplace they must be fitted at the complete conclusion of the installation process. It may be necessary to use the outer fascia to initially locate the gas fireplace but then remove it again so that there is no chance of damage.

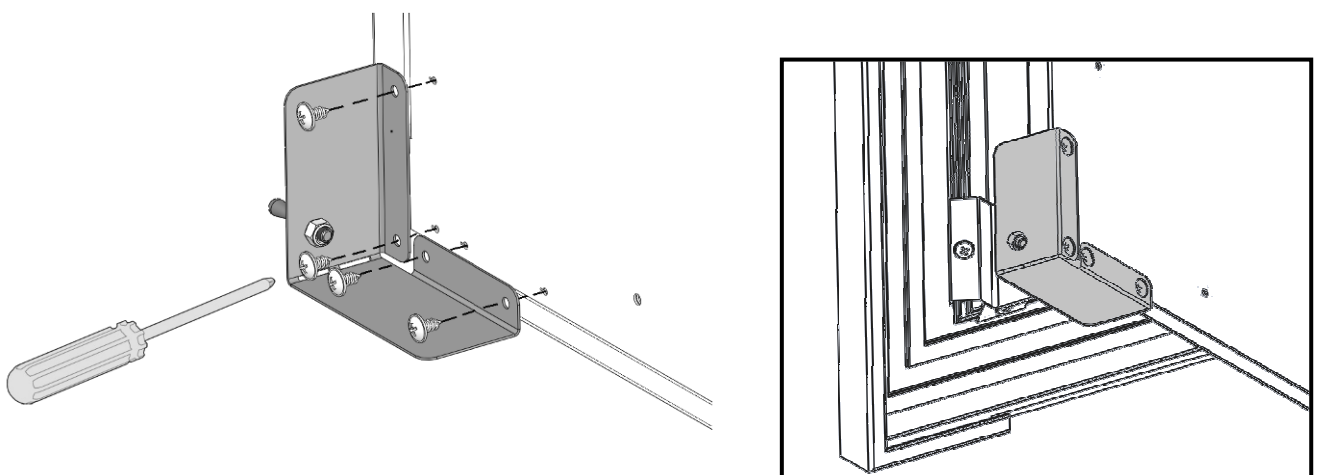
Note: Never Ever Rub the Fascia Panels.

Step 1:

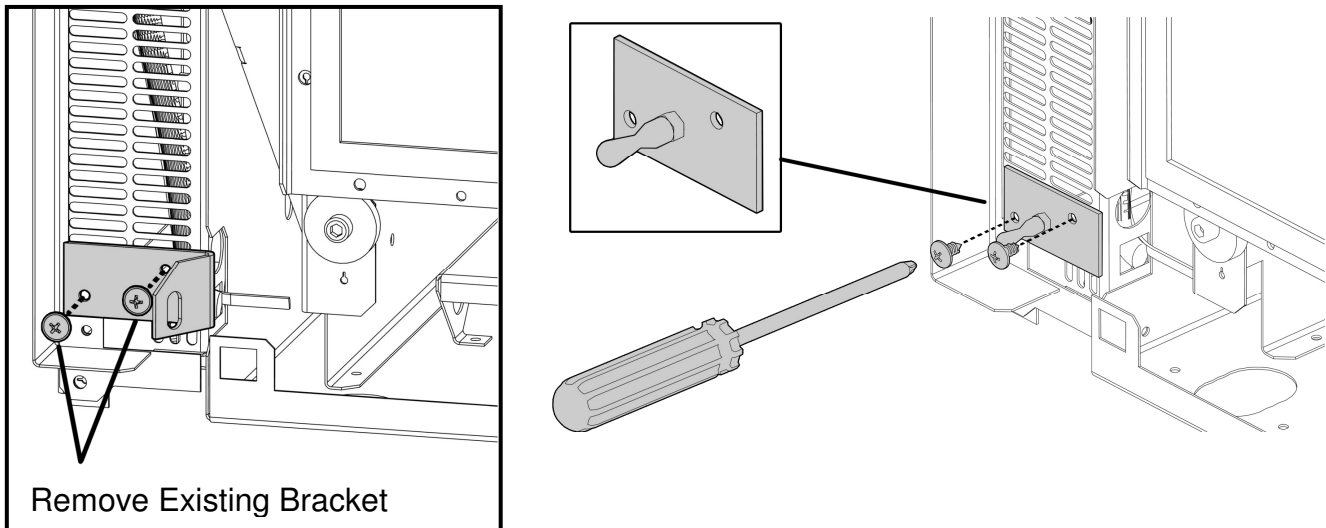


The fascia is to be held in place by two fascia brackets. The right hand fascia bracket needs to be bent into shape as shown in the figure above. Bend the bracket 90deg along the perforated line. Fit the enclosed male attachment to the bracket as shown and tighten the nut on the back.

Step 2:

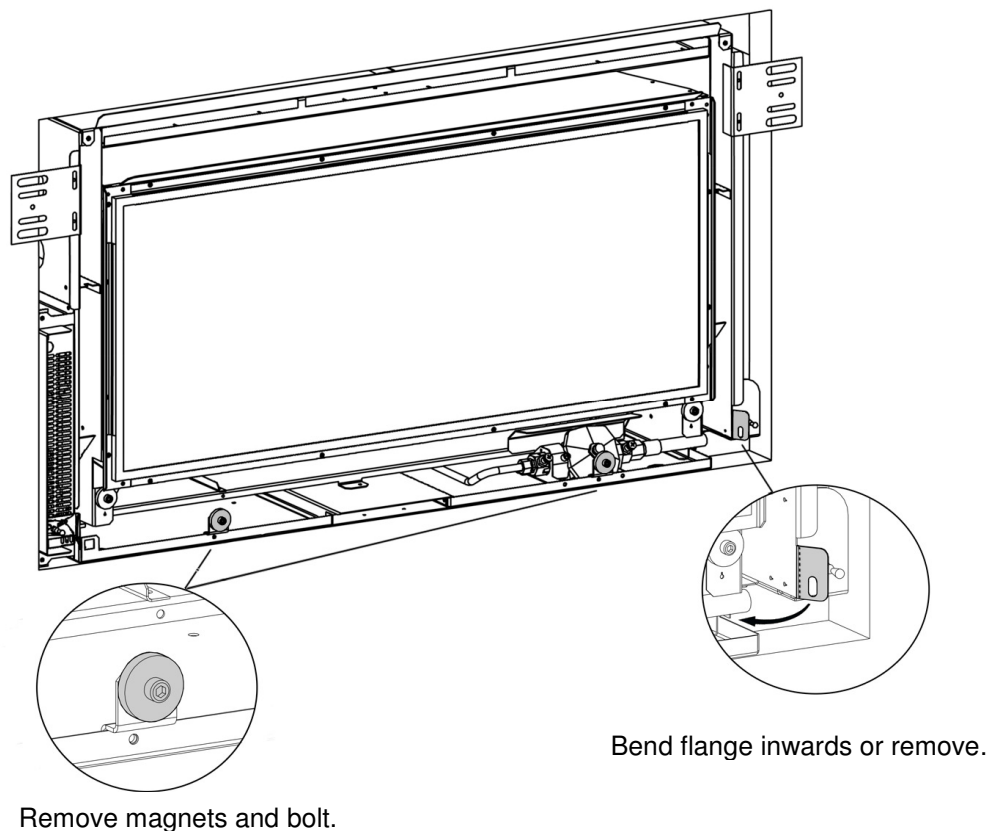


On the right hand outer side of the firebox there are four existing mounting holes, these are located at the front bottom corner. To fit the right hand fascia mounting bracket, align the part with the screw holes then screw in the four pozi-drive screws until tight. This added part will hold one of the male attachments for the fascia.

Step 3:

The next step in attaching the fascia mounts, is to remove the existing left hand fascia bracket attached to the control box on the front, left hand side of the firebox. Using a screwdriver, carefully screw out the two screws holding the left hand bracket in place, remove this bracket. Replace with the new left hand fascia mounting bracket using the screws for the previous bracket, these holes will line up with the previous screw holes.

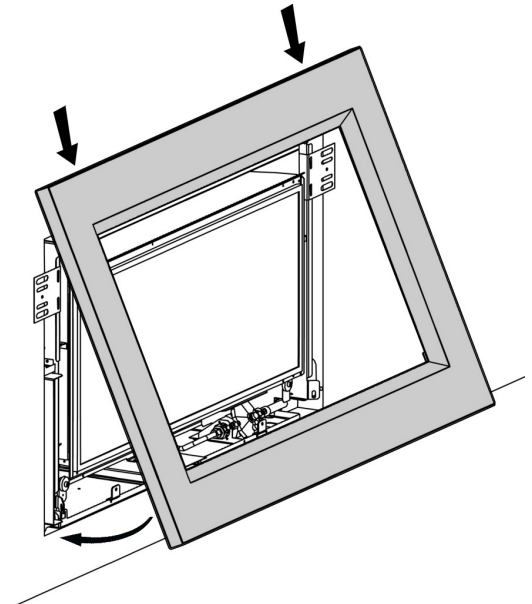
Notice that the hole for the enclosed male attachment is not centre in the bracket, and therefore the side with the longest flange must be pointing to the right when you fit the male attachment to the bracket, as shown in the picture.

Step 4:

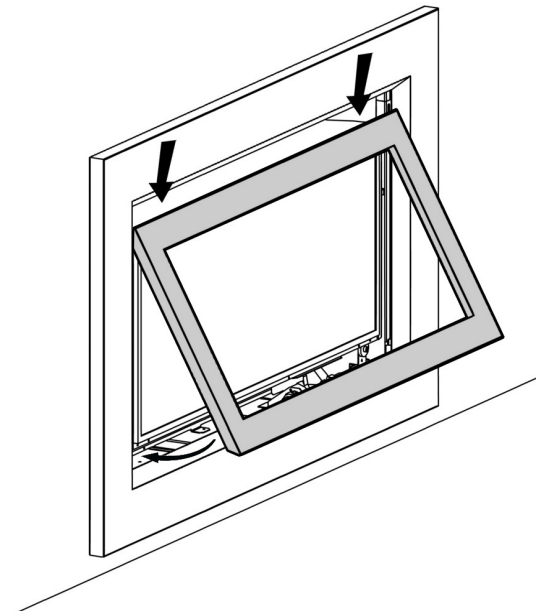
For the Outer Fascia to fit correctly, the two existing lower magnets and fixings must be removed. The fascia mounting flanges must also be modified. To do this bend the flange towards the center of the fire, making sure it is clear from the Outer Fascia when fitted.

IB850 Only (see next page for IB1100):

Step 5: Hang the Outer Fascia (larger one) from the 45 degree flange at the top of the firebox. Once the Fascia is hung on this flange it will swing down and clip into place. Once it has clipped onto the firebox the Fascia should be parallel with the wall.

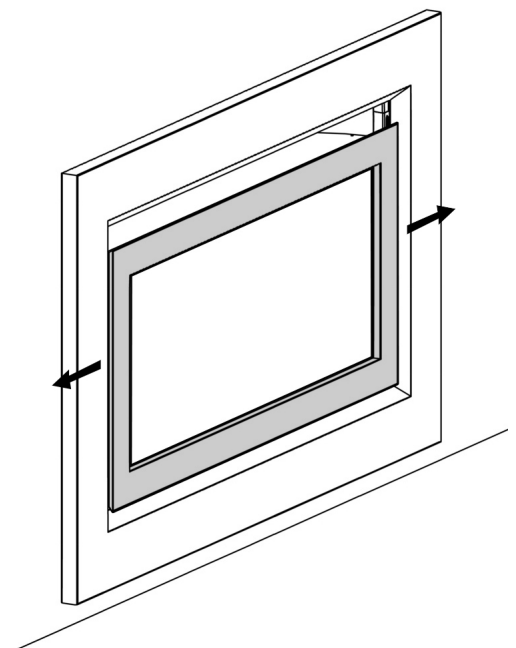


Step 6: Attach the Inner Fascia Brackets to the bottom of the Inner Fascia (smaller one) as per the diagram supplied with the Inner Fascia. Hang the top edge of the Inner Fascia from the lip that extends at 45 degrees from the top of the firebox. This Fascia is held in at its base by magnets.



Step 7: After fitting the Inner Fascia, check that it is centered. If this panel is not centered, adjust the Inner Fascia side to side until the trim fits well.

The fascia installation is now complete.



IB1100 Only:

- Step 5:** Attach the Inner Fascia Brackets to the bottom of the Inner Fascia (smaller one) as per the diagram supplied with the Inner Fascia. Hang the top edge of the Inner Fascia from the lip that extends at 45 degrees from the top of the firebox. Be very careful not to damage the powdercoating on the Inner Fascia. This fascia is fixed at its base by two screws. Leave the screws loose enough to be able to adjust the Inner Fascia.

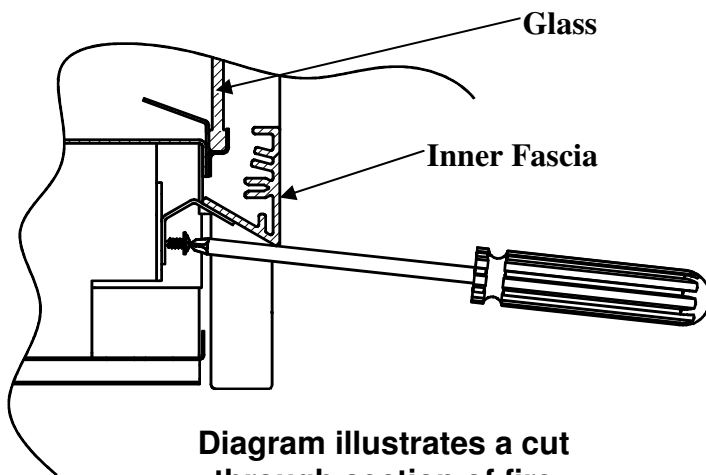
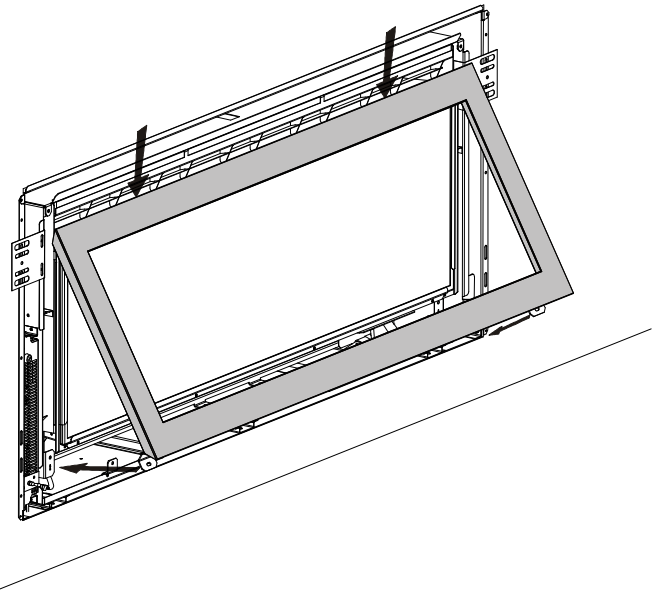


Diagram illustrates a cut through section of fire

- Step 6:** Check that the Inner Fascia is centered. If this panel is not centered, adjust the Inner Fascia side to side until the spaces on either side are even. Tighten the screws to fix the Inner Fascia in place.

- Step 7:** The Outer Fascia is now fitted over the top of the Inner Fascia. Hang the Outer Fascia (larger one) from the 30 degree flange at the top of the fireplace, being **very careful** not to damage either the Inner or Outer Fascias as there is not a lot of room to fit the Outer over the Inner. Once the Fascia is hung on this flange and clear of the Inner Fascia it will swing down and clip into place.

Once it has clipped onto the fireplace check that the Fascia is parallel with the wall. The fascia installation is now complete.

